

**FIBRE CONCRETE PRODUCT NOTE:**

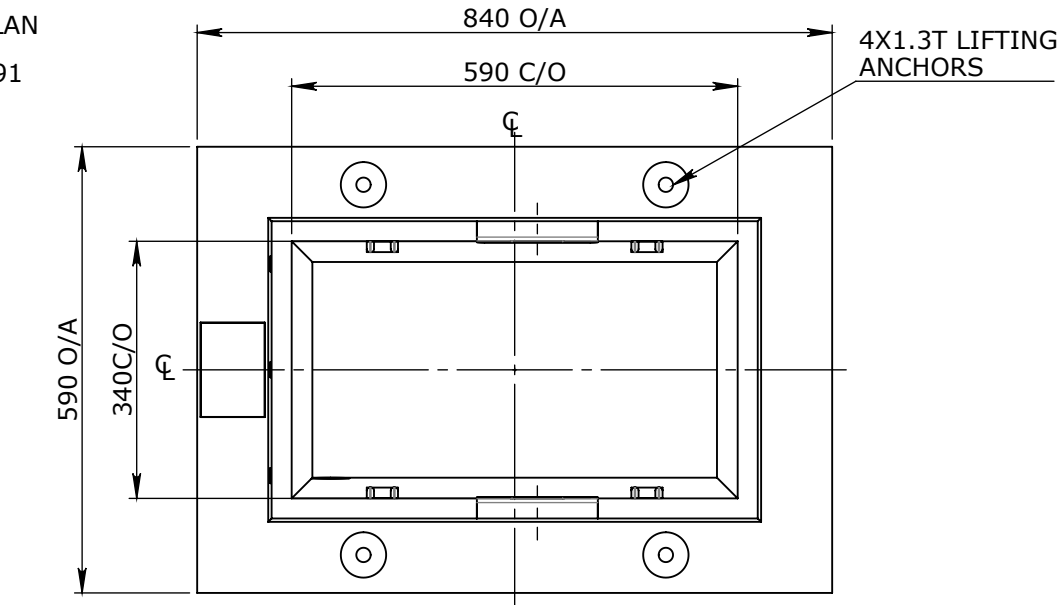
1. REFER TO GENERAL TOLERANCES UNO
2. CONCRETE FIBRE 40MPA (FIBRECON MP47@5Kg/M³)
3. ALL LIFTING POINTS TO BE USED WHEN LIFTING
4. MINIMUM STRENGTH OF CONCRETE SHALL BE 25MPa AT THE TIME OF LIFTING
5. COVER TO REINFORCEMENT TO BE 35mm
6. REFER TO ANCON LIFTING ARRANGEMENT PLAN
7. CONCRETE VOLUME (M³) = [0.19]
8. ENGINEERING CHANGE ORDER REF : ECO0291

**CONSTRUCTION TOLERANCE**

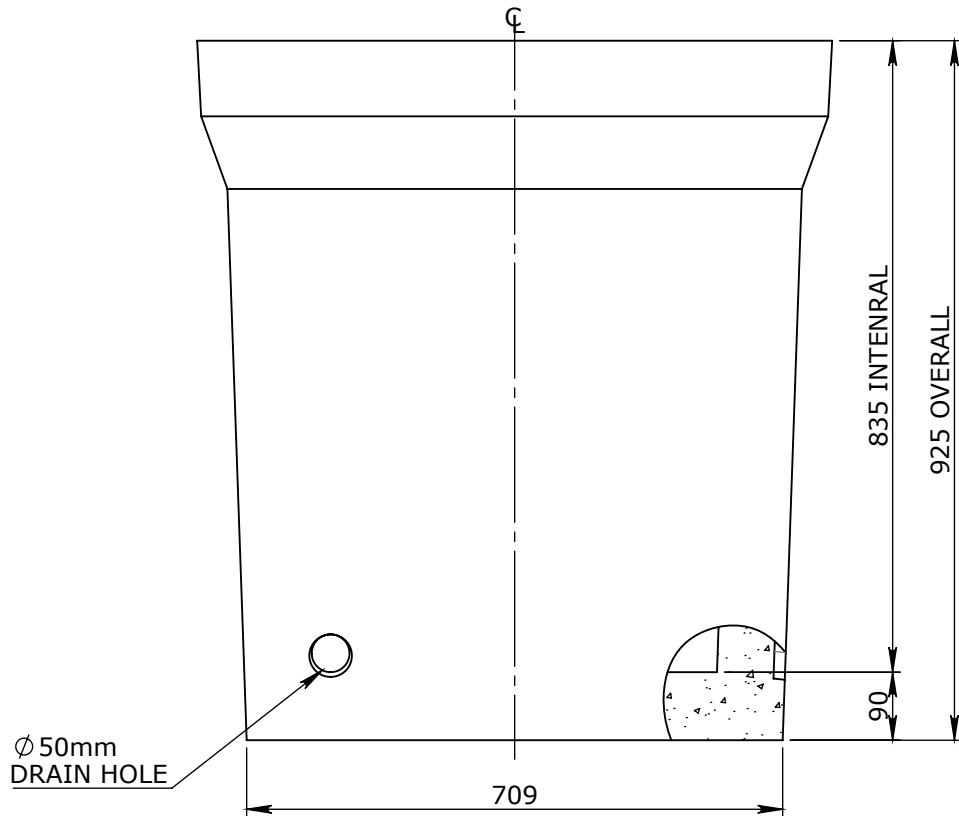
- OVERALL DEPTH: ±10mm
- FLATNESS OF TOP SURFACE: +0 AND - 5mm IN 1 SQM AREA

**SURFACE FINISH**

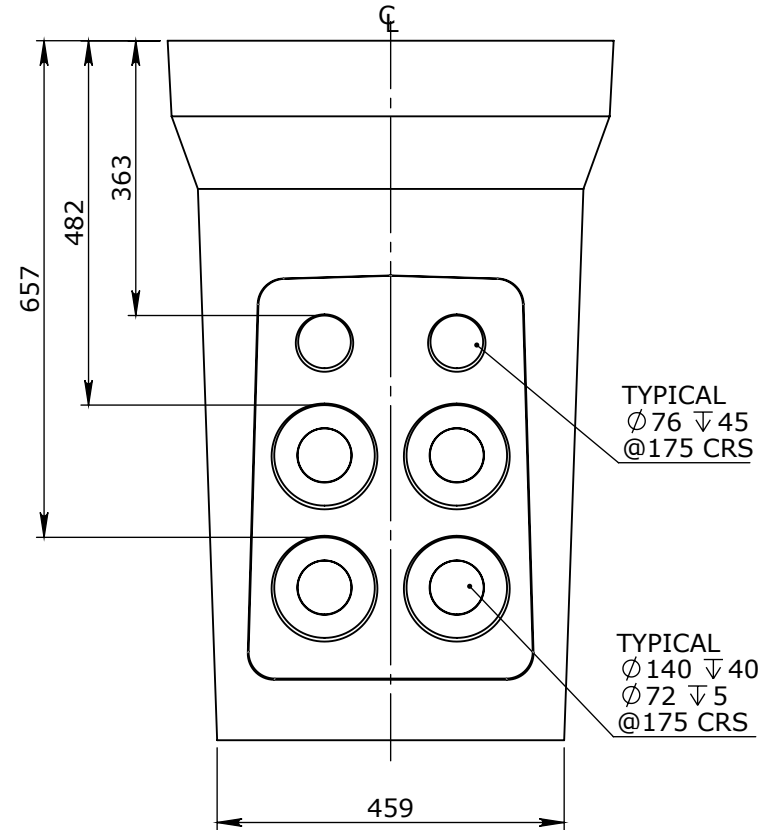
- SIDES: OFF FORM FINISH



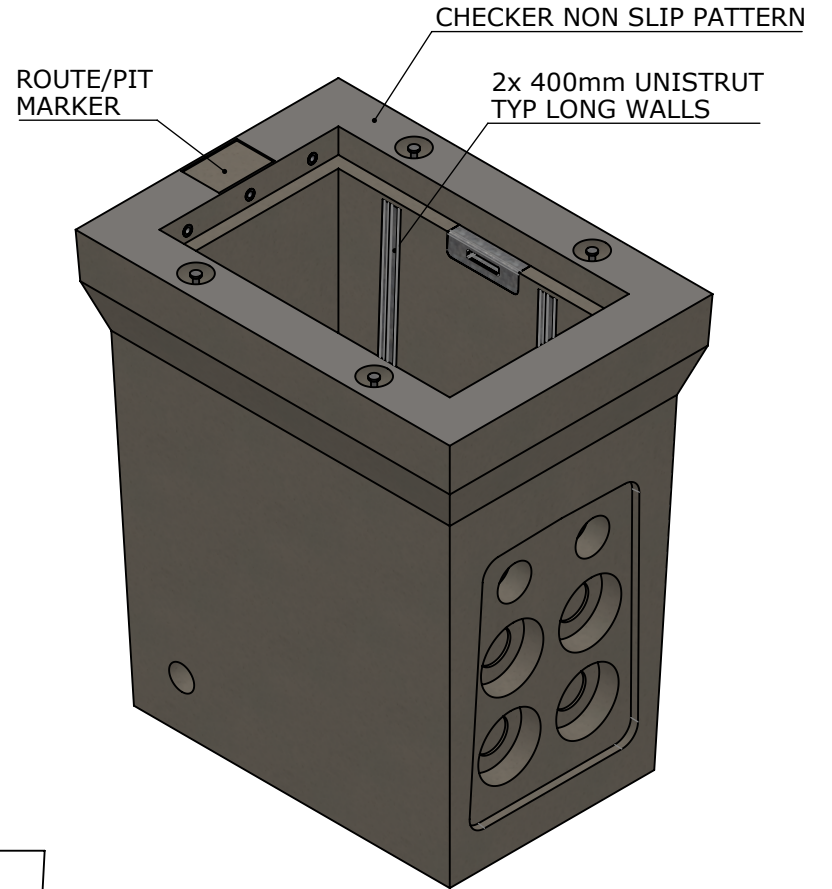
**PLAN VIEW**



**ELEVATION VIEW**




**END VIEW**  
BOTH ENDS TYPICAL



**ISOMETRIC VIEW**  
SCALE 1:12

UNCONTROLLED DOCUMENT WHEN PRINTED

<div>TOLERANCE NOTES:</div> <div>1. CONCRETE TOLERANCES TO BE INCONJUNCTION / ACCORDANCE WITH AS3600 - CONCRETE STRUCTURES</div> <div>2. WHEN A BROOME FINISH IS REQUIRED THE GENERAL TOLERANCE SUPERCEEDS THE FLATNESS TOLERANCE</div> <div>3. WALL THICKNESS - DIMENSION AS NOTED IS MINIMUM THICKNESS ONLY</div> <div>4. CONCRETE GRADE - 40MPA UNLESS NOTED OTHERWISE</div> <div>5. DIMENSIONS ARE NOT INCLUSIVE OF SEALANTS OF JOINTS</div> <div>6. SURFACE FINISH - CLASS 4 (AS3610.1)</div>										CHK / APPR: LM		<div><div>Infrastructure Products Australia</div><div>A CRH COMPANY</div><div>HEAD OFFICE: 1 REEVES COURT BREAKWATER, VIC 3219 1800 065 356</div><div>ENGINEERING &amp; DEVELOPMENT: 91 STRADBROKE STREET HEATHWOOD, QLD 4110 (07) 3714 0444</div></div>				DRAFTED DATE: 25/11/2019		PART/PRODUCT # 50201111		QUOTE #		ORDER #					
										DATE:						DRAFTED BY: MLEE		REINFORCEMENT COMPUTATION		PIT #		ITEM TYPE					
					3 ECO0291 RELEASED DRAWING					211024						ML		CA									
					Rev. DESCRIPTION					DATE						BY		APPROVED		RPEQ DOCUMENT #:							
GENERAL TOLERANCES										REVISION CONTROL																	
NOMINAL:		UP TO 1000mm			1M AND ABOVE			FLATNESS: (NOT INCLUDING BROOME FINISH)			WEIGHT: 461.06Kg																
TOLERANCE:		±5mm			1mm IN 200mm UP TO A MAXIMUM OF 20mm			±4mm PER 1M WIDTH IN 1M LENGTH			MATERIAL: CONCRETE FIBRE 40MPa																
											IRF REF:																
																				DRAWN TO AS 1100 DO NOT SCALE FROM SHEET							
																						DRAWING NAME PIT CONCRETE BELLTOP 5 CLASS D		REV. 3			
																				DRAWING # 50201111		PAGE 1 / 1		SHEET SIZE A3		SCALE 1:10	