

CONCRETE PRODUCT NOTE:

1. REFER TO GENERAL TOLERANCES UNO
2. GRADE OF CONCRETE - 40MPA
3. ALL LIFTING POINTS TO BE USED WHEN LIFTING
4. MINIMUM STRENGTH OF CONCRETE SHALL BE 25MPA AT THE TIME OF LIFTING
5. REFER TO ANCON LIFTING ARRANGEMENT PLAN
6. REFER TO [50207384] FOR ENCASEMENT DETAIL

NOTE:

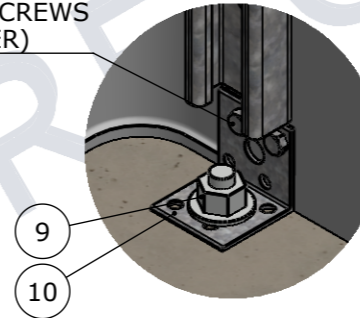
- REFER TO FOLLOWING DOCUMENTS FOR INSTALLATION INSTRUCTIONS FOR MANHOLE COMPONENTS AND LADDER
1. DRAWING [CUBIS-INS-01]
 2. CUBIS SYSTEMS_ULTIMA CONNECT INSTALLATION GUIDE

BOM:50207385

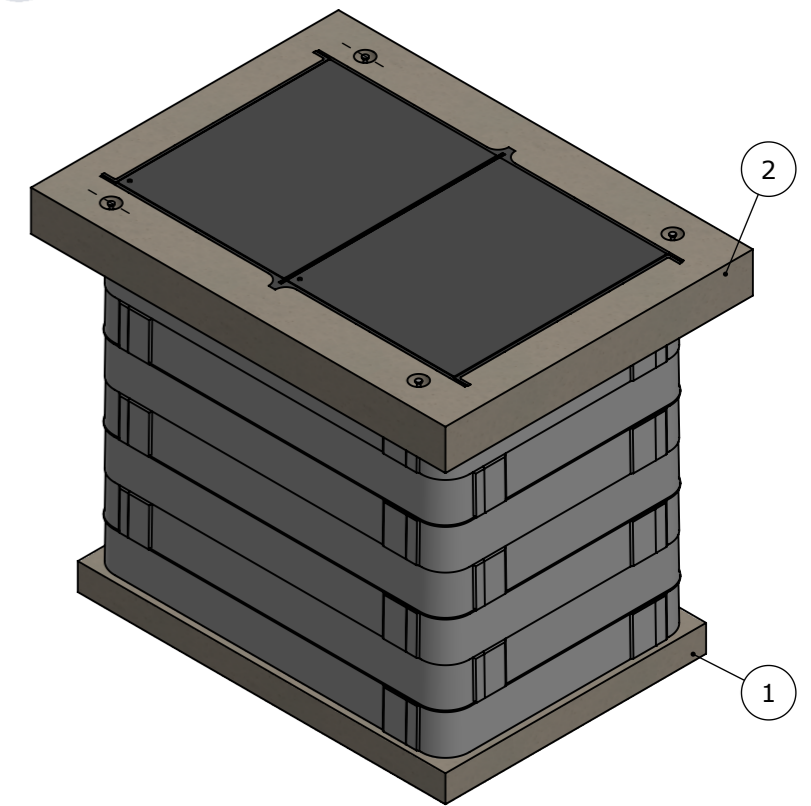
ITEM #	QTY.	PART #	DESCRIPTION	WEIGHT
1	1		INSITU CAST FLOOR	324
2	1	50207384	ENCASEMENT 1550X1150X150 TO SUIT 2 PART FRAME AND COVER CLASS B	385.63
3	8	50201129	STAKKABOX CONNECT HS RIGHT 1200mm	6.72
4	8	50201123	STAKKABOX CONNECT HS RIGHT 800mm	4.88
5	28	50201133	STAKKABOX ULTIMA PEG	217.13
6	6	50201128	STAKKABOX CONNECT HS LEFT 1200mm	3.05
7	6	50201122	STAKKABOX CONNECT HS LEFT 800mm	2.34
8	2	50207655	UNISTRUT ZP 1000mm	0
9	2	50202755	SLEEVE ANCHOR GALVANISED M10x50	0
10	2	50208048	BRACKET GENERAL PURPOSE 40x40x40x2	0
11	1	50203569	LADDER MANHOLE TELSTRA APPROVED 2400mm C/W BRACKET	

- ITEM 11 - CUT TO 1315mm LENGTH ON SITE (FOR 7 LAYERS)

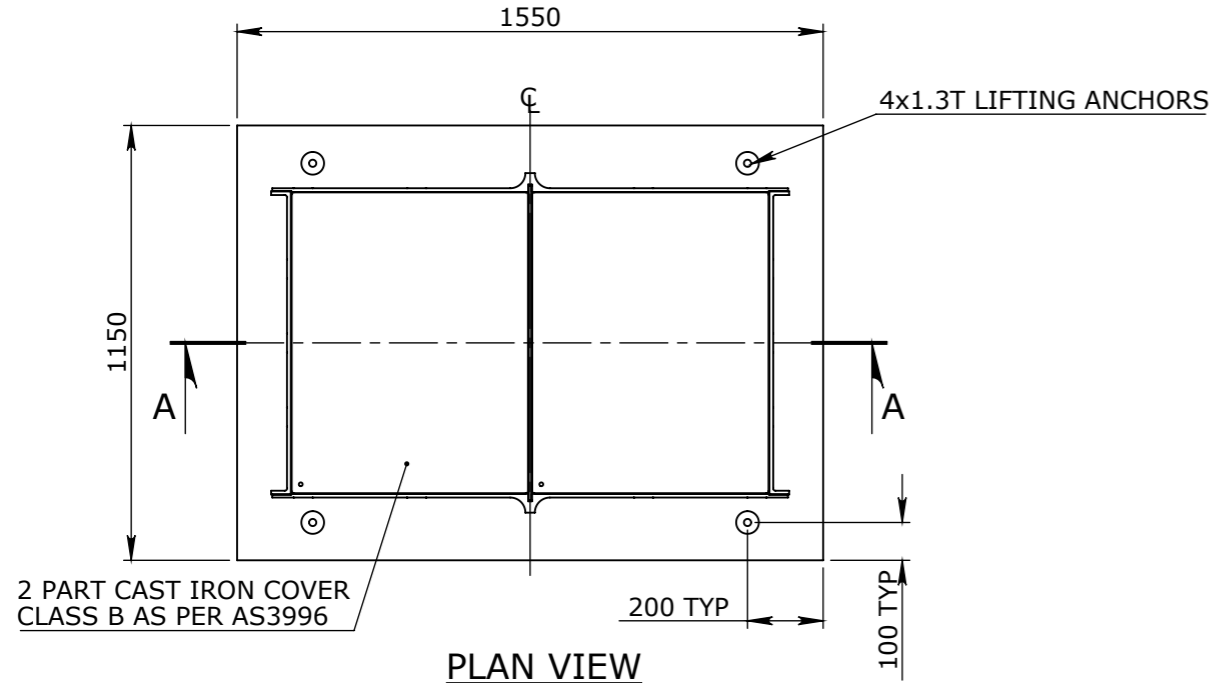
TELSTRA 14G TYPE 17 STAINLESS STEEL PIT SCREWS (SUPPLIED BY INSTALLER)



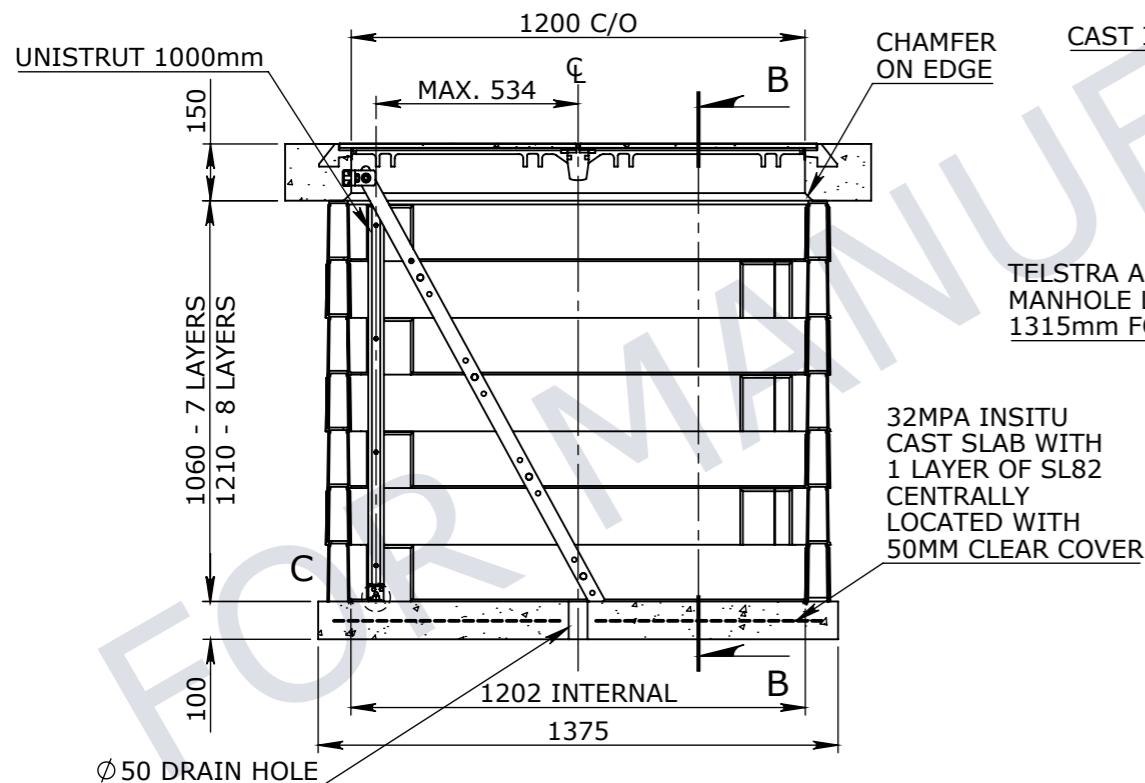
DETAIL C



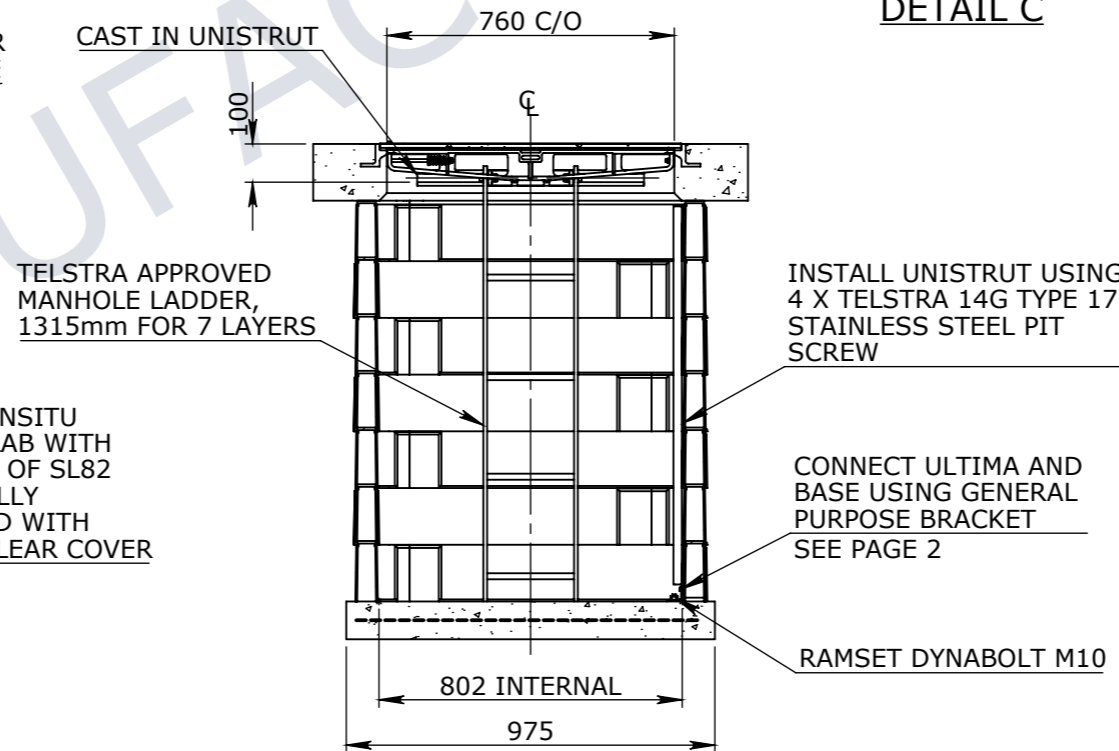
ISOMETRIC VIEW



PLAN VIEW



SECTION A-A



SECTION B-B

UNCONTROLLED DOCUMENT WHEN PRINTED

TOLERANCE NOTES:

1. CONCRETE TOLERANCES TO BE IN CONJUNCTION / ACCORDANCE WITH AS3600 - CONCRETE STRUCTURES
2. WHEN A BROOM FINISH IS REQUIRED THE GENERAL TOLERANCE SUPERCEDES THE FLATNESS TOLERANCE
3. WALL THICKNESS - DIMENSION AS NOTED IS MINIMUM THICKNESS ONLY
4. CONCRETE GRADE - 40MPA UNLESS NOTED OTHERWISE
5. DIMENSIONS ARE NOT INCLUSIVE OF SEALANTS OF JOINTS
6. SURFACE FINISH - CLASS 4 (AS3610.1)

Rev	DESCRIPTION	DATE	BY	APPROVED
5	ADDED LADDER	04/03/24	ML	CA
4	ADDED SUMP	01/03/24	ML	CA
3	CHANGED PUNCHED STRAPPING TO UNISTRUT	23/02/24	ML	CA

GENERAL TOLERANCES		REVISION CONTROL	
NOMINAL:	UP TO 1000mm	1M AND ABOVE	FLATNESS: (NOT INCLUDING BROOME FINISH)
TOLERANCE:	±5mm	1mm IN 200mm UP TO A MAXIMUM OF 20mm	±4mm PER 1M WIDTH IN 1M LENGTH

CHK / APPR: Lee, Mia

DATE:

RPEQ DOCUMENT #:

WEIGHT: 810Kg

MATERIAL:

IRF REF:

Infrastructure Products Australia
A CRH COMPANY

HEAD OFFICE: 1 REEVES COURT BREAKWATER, VIC 3219 1800 065 356

ENGINEERING & DEVELOPMENT: 91 STRADBROKE STREET HEATHWOOD, QLD 4110 (07) 3714 0444

DRAFTED DATE: 16/08/2022

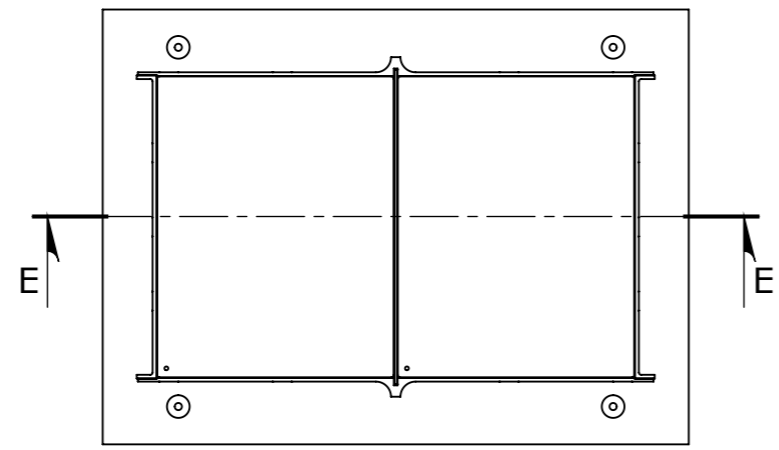
DRAFTED BY: MLEE

DATE LAST SAVED: 7/03/2024

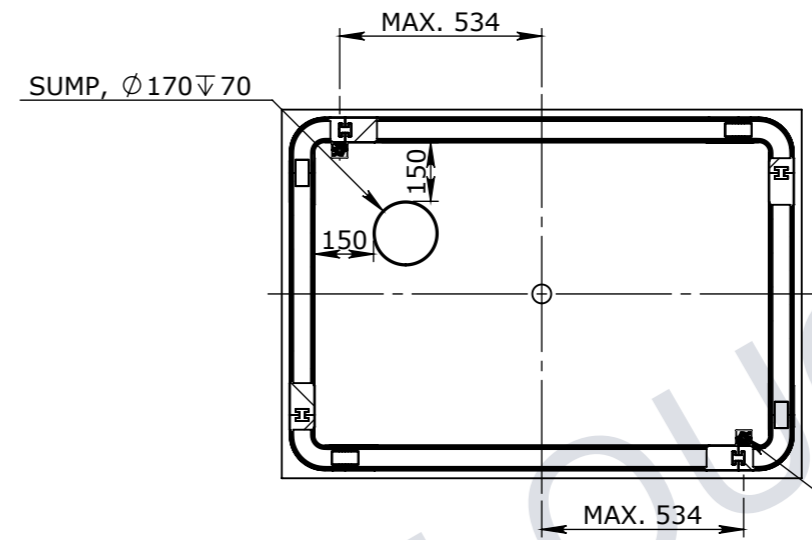
LAST SAVED BY: MLEE

DRAWN TO AS 1100 DO NOT SCALE FROM SHEET

PART/PRODUCT #	QUOTE #	ORDER #
50207385		
REINFORCEMENT COMPUTATION	PIT #	ITEM TYPE
CLIENT	PROJECT DESC	
INFRASTRUCTURE PRODUCTS AUSTRALIA	CATALOGUE PRODUCTS	
DRAWING NAME	DRAWING #	REV.
ULTIMA 1280 MANHOLE CLASS B NO FLOOR	50207385	5
PAGE	SHEET SIZE	SCALE
1 / 2	A3	1:20

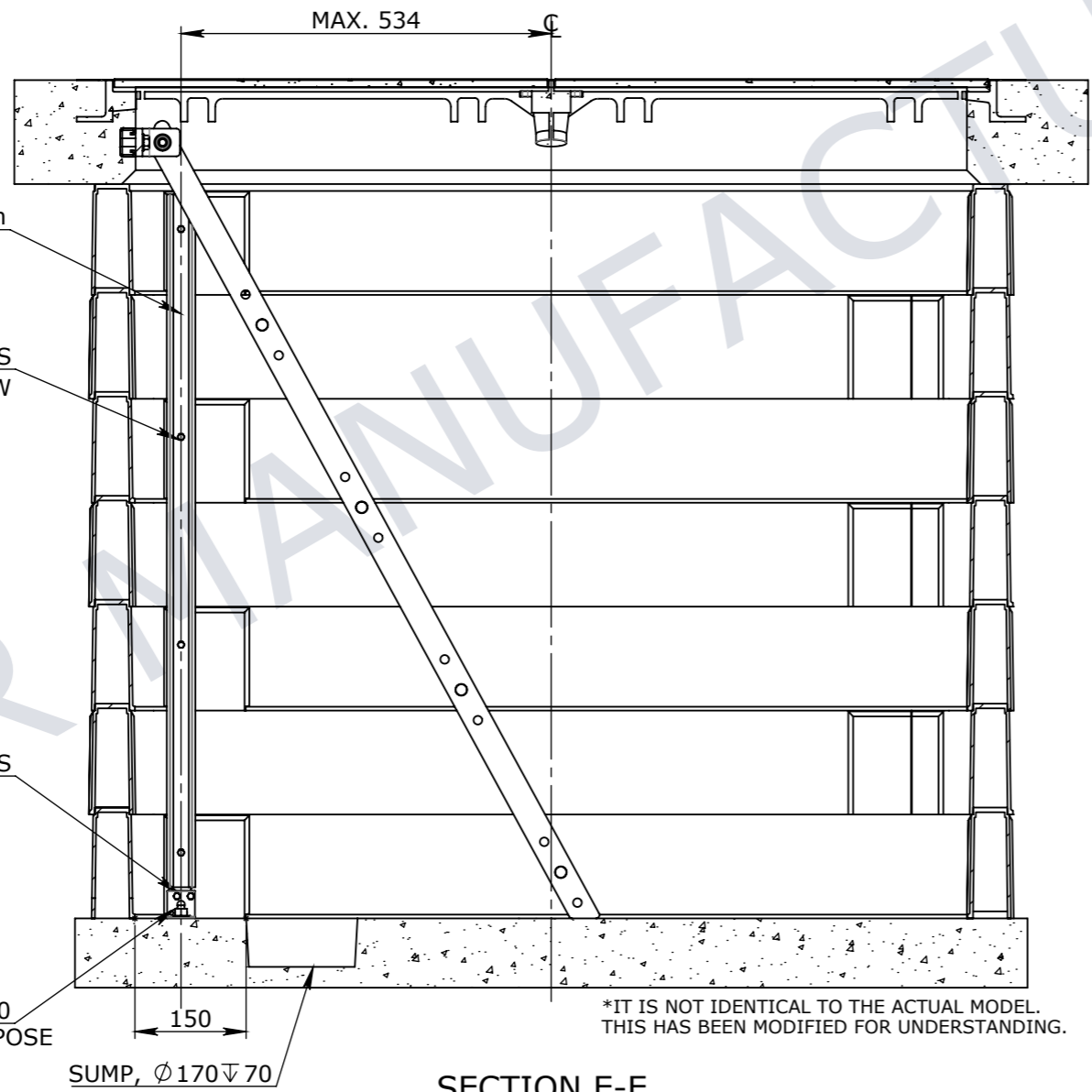


PLAN VIEW



PLAN VIEW
WITHOUT ENCASEMENT

2 X RAMSET DYNABOLT M10
FIX GENERAL PURPOSE
BRACKET TO BASE



SECTION E-E
SCALE_1 : 10

*IT IS NOT IDENTICAL TO THE ACTUAL MODEL.
THIS HAS BEEN MODIFIED FOR UNDERSTANDING.

* FASTENERS TO BE SUPPLIED BY INSTALLER

Infrastructure Products Australia <small>A CRH COMPANY</small>		NAME: ULTIMA 1280 MANHOLE CLASS B NO FLOOR	REV 5
DRAWING No: 50207385			
DRAFTED BY:	DRAFTED DATE:	PAGE: 2/2	SHEET: A3
DRAWN TO AS 1100 <small>DO NOT SCALE FROM SHEET</small>		SCALE UNO: 1:20	