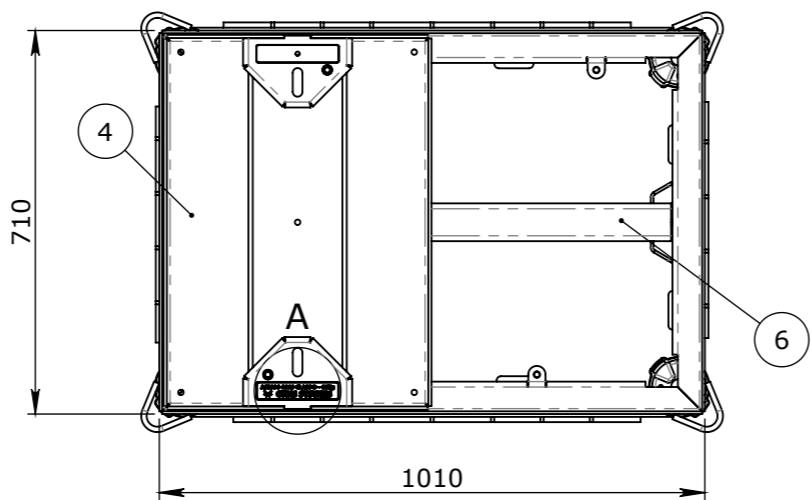


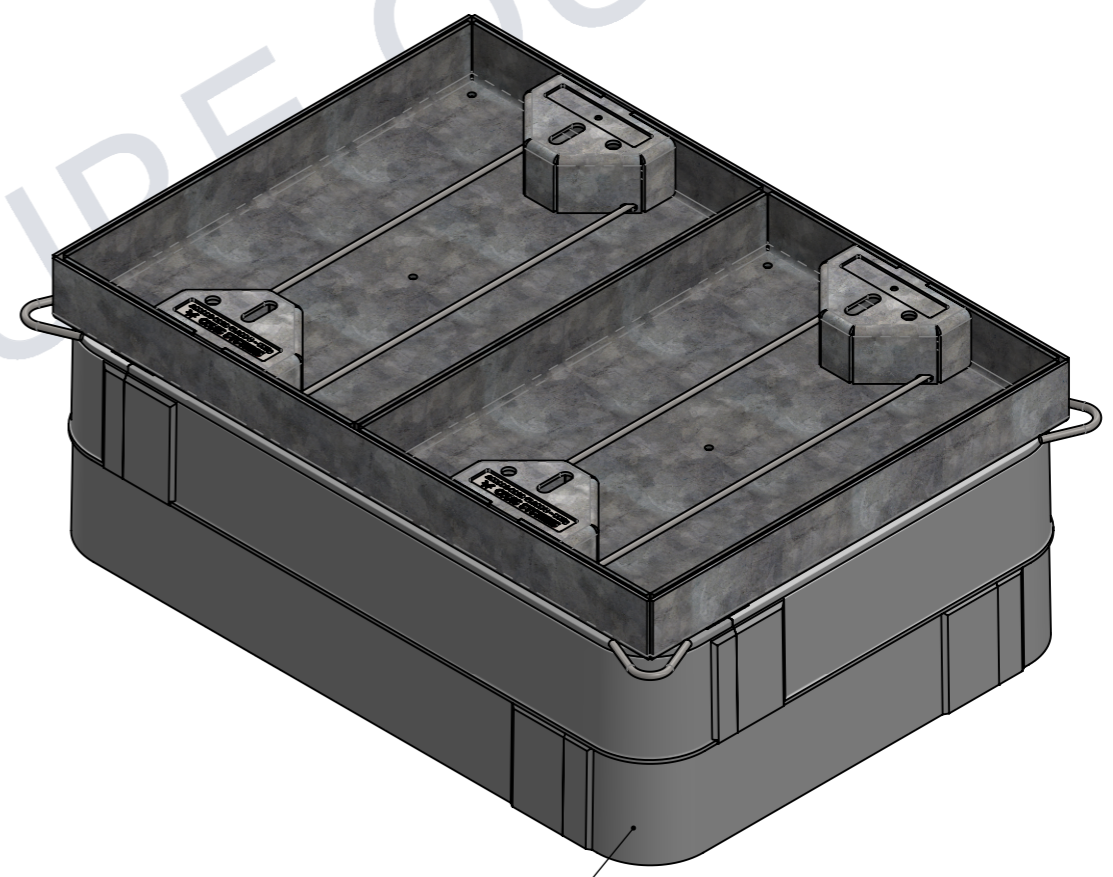
**DETAIL A**  
SCALE\_1:2



**PLAN VIEW**  
LID REMOVED FOR CLARITY

**BOM:50204848**

ITEM #	QTY.	PART #	DESCRIPTION	WEIGHT
1	1	NPD20-016-10-01	CUBIS INFIL FRAME	24.58
2	2	NPD20-016-10-02	CUBIS INFIL COVER	29.03
3	2	NPD20-016-10-03	900X600D INFIL NAME PLATE	0.0
4	1	NPD20-016-10-04	BEAM, CENTRE 900mm	8.0
5	2	50201124	STAKKABOX CONNECT HS LEFT 900mm	2.51
6	2	50201125	STAKKABOX CONNECT HS RIGHT 900mm	5.34
7	2	50201118	STAKKABOX CONNECT HS LEFT 600mm	1.99
8	2	50201141	STAKKABOX CONNECT HS RIGHT 600mm	3.94



EXTRA LAYERS AS NEEDED

**ULTIMA 900x600**


UNCONTROLLED DOCUMENT WHEN PRINTED

**TOLERANCE NOTES:**  
 1. CONCRETE TOLERANCES TO BE IN CONJUNCTION / ACCORDANCE WITH AS3600 - CONCRETE STRUCTURES  
 2. WHEN A BROOME FINISH IS REQUIRED THE GENERAL TOLERANCE SUPERCEEDS THE FLATNESS TOLERANCE  
 3. WALL THICKNESS - DIMENSION AS NOTED IS MINIMUM THICKNESS ONLY  
 4. CONCRETE GRADE - 40MPA UNLESS NOTED OTHERWISE  
 5. DIMENSIONS ARE NOT INCLUSIVE OF SEALANTS OF JOINTS  
 6. SURFACE FINISH - CLASS 4 (AS3610.1)

Rev	DESCRIPTION	DATE	BY	APPROVED
3				
2				
1				

GENERAL TOLERANCES		REVISION CONTROL	
NOMINAL:	UP TO 1000mm	1M AND ABOVE	FLATNESS: (NOT INCLUDING BROOME FINISH)
TOLERANCE:	±5mm	1mm IN 200mm UP TO A MAXIMUM OF 20mm	±4mm PER 1M WIDTH IN 1M LENGTH

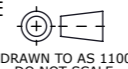
CHK / APPR:	CA
DATE:	
RPEQ DOCUMENT #:	
WEIGHT:	108.72Kg
MATERIAL:	
IRF REF:	



HEAD OFFICE:  
 CARNINGHAM ROAD  
 BALLARAT, VIC 3351  
 (03) 5335 8741

ENGINEERING & DEVELOPMENT:  
 2 STRADBROKE STREET  
 HEATHWOOD, QLD 4110  
 (07) 3714 0444

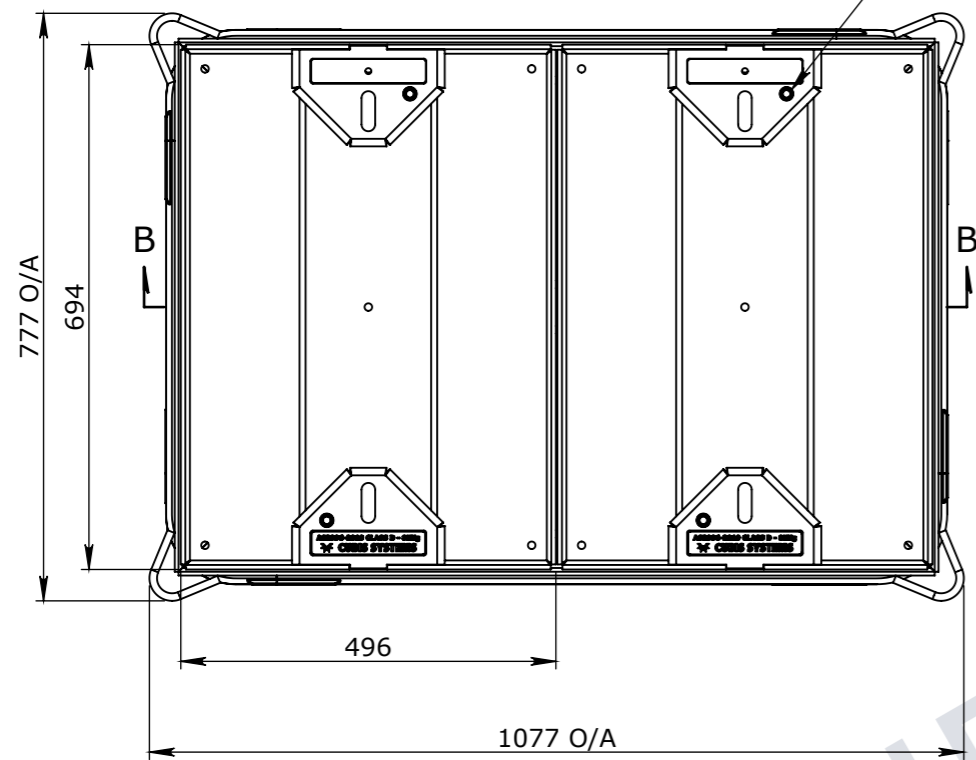
THE INFORMATION DISCLOSED IN THIS DOCUMENT IS CONFIDENTIAL AND IS NOT WITHOUT THE EXPRESS CONSENT OF CUBIS SYSTEMS AUSTRALIA TO BE COPIED, REPRODUCED, OR GIVEN TO ANY OTHER PARTY IN ANY FORM AND THAT ALL COPYRIGHT, DESIGNS AND PATENTS VEST IN CUBIS SYSTEMS AUS.

DRAFTED DATE:	1/06/2020
DRAFTED BY:	
DATE LAST SAVED:	1/04/2021
LAST SAVED BY:	CABEYSINGH
	
DRAWN TO AS 1100 DO NOT SCALE FROM SHEET	

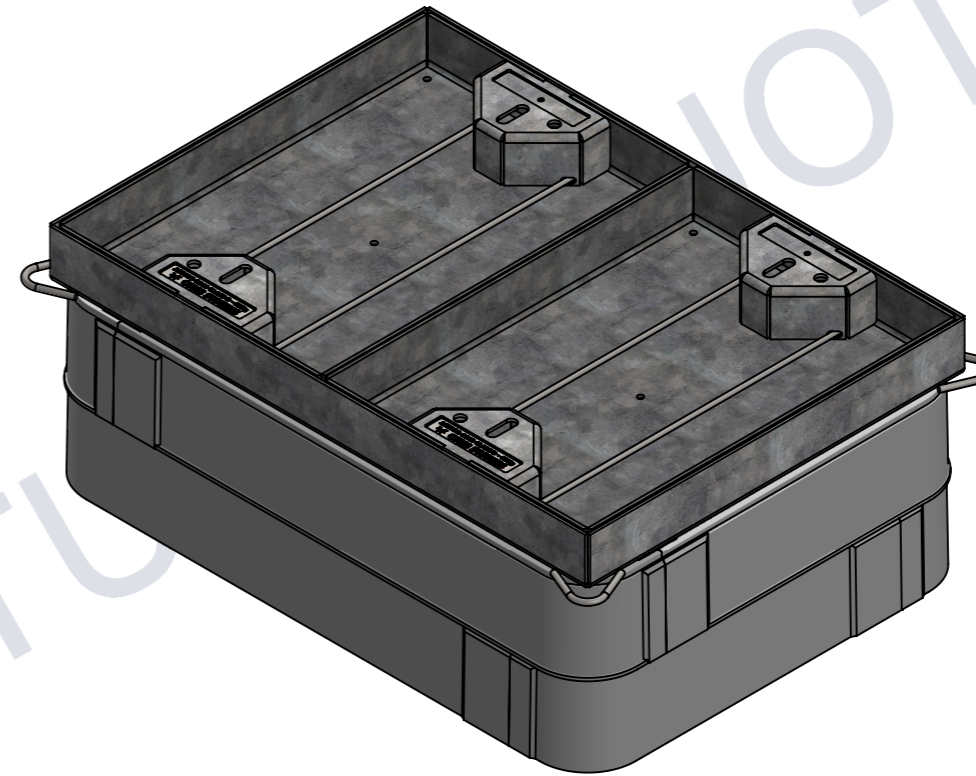
PART/PRODUCT #	NPD20-016	QUOTE #	ORDER #
REINFORCEMENT COMPUTATION		PIT #	ITEM TYPE
CLIENT	CUBIS SYSTEMS		
PROJECT DESC	CUBIS INFIL COVER PROJECT		
DRAWING NAME	900x600D GMS COVER ASSEMBLY		
DRAWING #	50204848	PAGE	1 / 2
SHEET SIZE	A3	SCALE	1:5
REV.	<b>0</b>		

NOTE/SAM

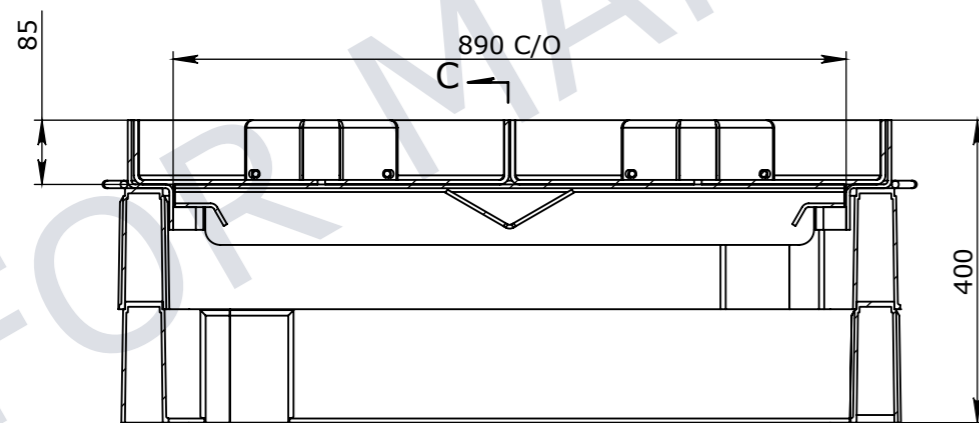
SECURE COVERS TO FRAME WITH BOLTS



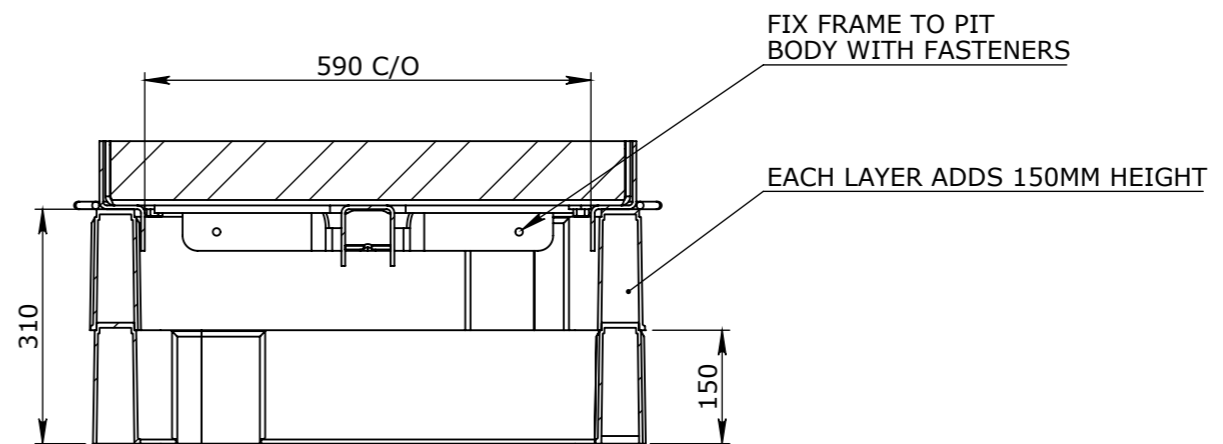
PLAN VIEW



ISOMETRIC VIEW



SECTION B-B



SECTION C-C

UNCONTROLLED DOCUMENT WHEN PRINTED



VICTORIA: CARNGHAM ROAD BALLARAT, VIC 3351  
QLD: 91 STRADBROKE STREET HEATHWOOD, QLD 4110  
DRAWN TO AS 1100 DO NOT SCALE FROM SHEET

NAME: CUBIS INFIL COVER PROJECT		REV: 0
DRAWING No: 50204848		
DRAFTED BY: ACHAO	DRAFTED DATE: 30/03/2021	PAGE: 2/2
SHEET: A3		SCALE UNO: 1:10