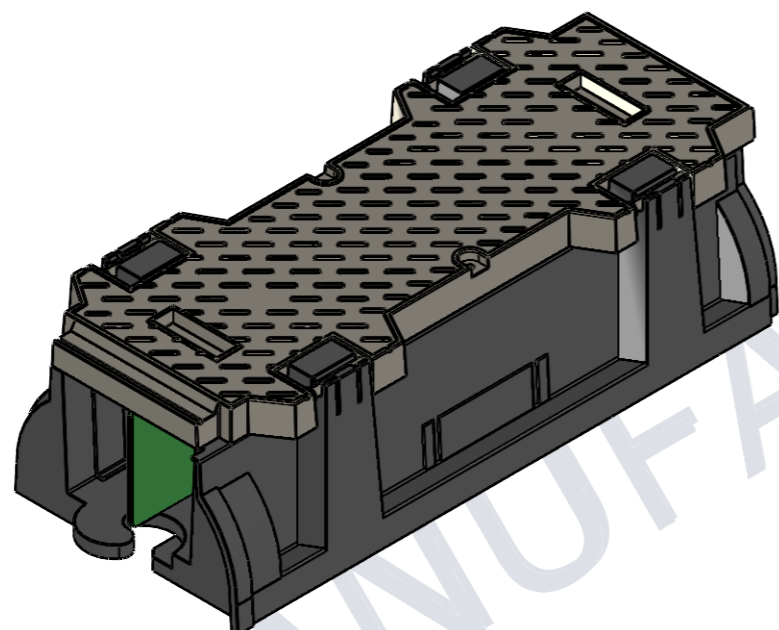


NOTE:

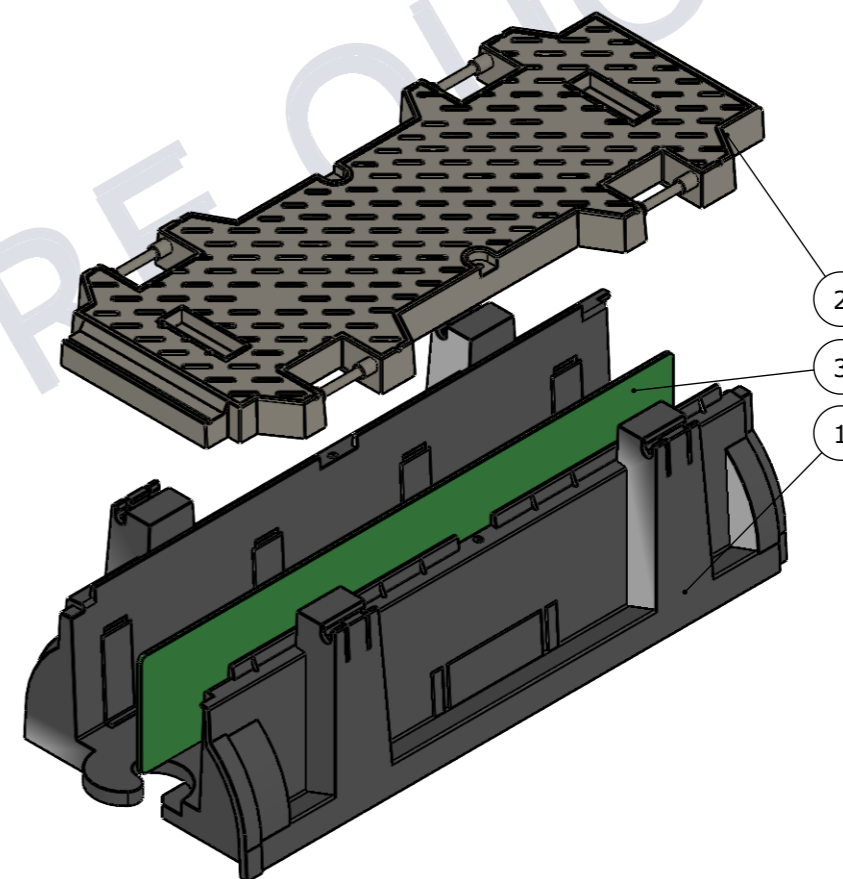
- WHEN INTERLOCKED AS UNIT EACH ITEM REPRESENTS A 1m SECTION SHOWN WITH OPTIONAL DIVIDER COLOURS CHANGED FOR CLARITY

BILL OF MATERIALS - 50201211

ITEM #	QTY.	PART #	EPICORE DESCRIPTION
1	1	50201211-01	RAILduct™ ASSEMBLY STRAIGHT BLACK - BASE
2	1	50201211-02	RAILduct™ ASSEMBLY STRAIGHT BLACK - COVER
3	1	50201211-03	RAILduct™ ASSEMBLY STRAIGHT BLACK - DIVIDER



ISOMETRIC VIEW



ISOMETRIC VIEW
EXPLODED

UNCONTROLLED DOCUMENT WHEN PRINTED

1. MATERIAL SPECIFICATIONS UNO SECTIONS & FLATS - AS 3679 - GR 300+ PLATES AS 3678 - GR 250 SHS AS 1163 - GR 350
2. WELDING TO COMPLY TO AS 1554.1 UNO

Rev	DESCRIPTION	DATE:	BY:	ECO#:

CHK / APPR:	LEE, MIA
DATE:	
RPEQ DOCUMENT #:	

Infrastructure Products Australia
A CRH COMPANY

PART/PRODUCT #	50201211	QUOTE #		ORDER #	
REINFORCEMENT COMPUTATION		PIT #		ITEM TYPE	
CLIENT	INFRASTRUCTURE PRODUCTS AUSTRALIA				
PROJECT DESC	CATALOGUE PRODUCTS				

GENERAL TOLERANCES				
NOMINAL SIZE	UP TO 150	ABOVE 150 UP TO 500	ABOVE 500	ANGULAR ∠ X.X±0°30'
TOL	±1.0	±2.0	±5.0	∠ X ± 1°

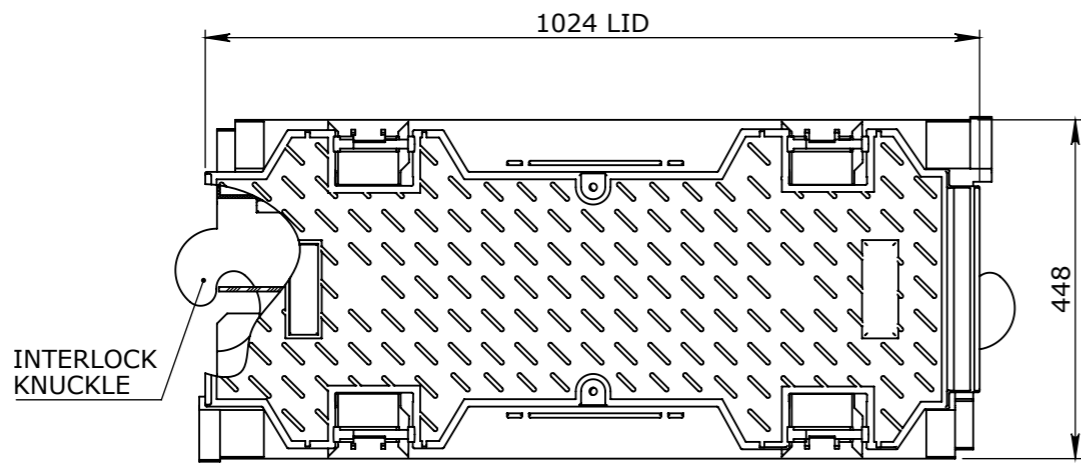
TOLERANCES - FABRICATION			REVISION CONTROL		
LINEAR X.XX ± 0.02	FACES SQUARE ⊥ 0.05/100	ANGULAR ∠ X.X ± 0°30' DIA. CONC WITHIN Ⓞ 0.05 TIR			
LINEAR X.X ± 0.1	FACES PARALLEL // 0.05/100	ANGULAR ∠ X ± 1° EDGES CHAMFERED 1.0 x 45°			
LINEAR X. ± 0.25	FACES FLAT ▯ 0.05/100	GENERAL SURFACE FINISH Ra 3.2			

WEIGHT:	13.91Kg
MATERIAL:	STRUCTURAL FOAM, HDPE
SURFACE TREATMENT:	

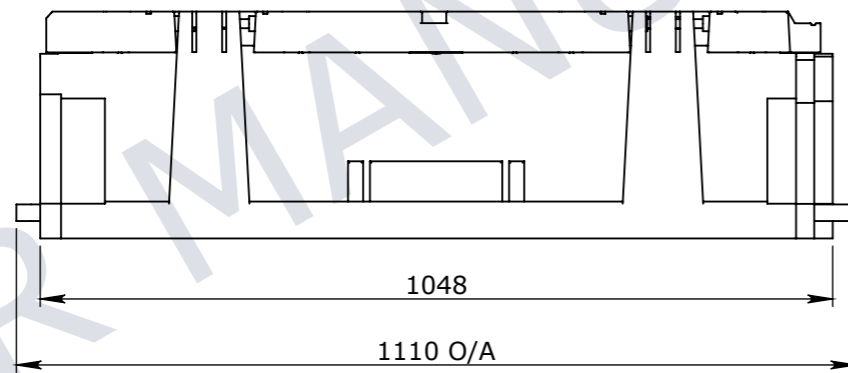
HEAD OFFICE:
1 REEVES COURT
BREAKWATER, VIC 3219
1800 065 356

ENGINEERING & DEVELOPMENT:
91 STRADBROKE STREET
HEATHWOOD, QLD 4110
(07) 3714 0444

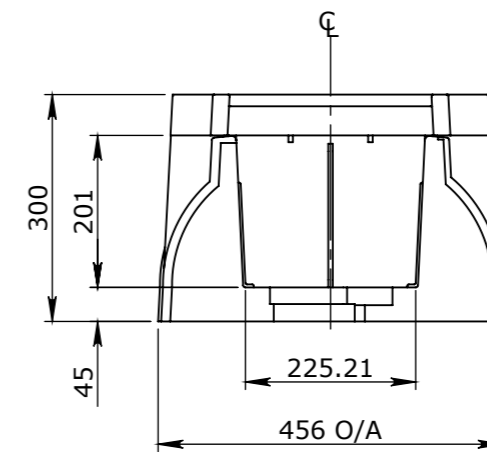
DRAWING NAME	RAILDUCT™ ASSEMBLY STRAIGHT BLACK			REV.	1
DRAWING #	50201211	PAGE	1 / 2	SHEET SIZE	A3
SCALE	1:10				



PLAN VIEW



ELEVATION VIEW



END VIEW

Infrastructure
Products Australia
A CRH COMPANY

DRAWN TO AS 1100
DO NOT SCALE
FROM SHEET

NAME: RAILduct™ ASSEMBLY STRAIGHT BLACK

DRAWING No: 50201211

DRAFTED BY: DRAFTED DATE: PAGE: 2/2 SHEET: A3 SCALE UNO: 1:10

REV **1**