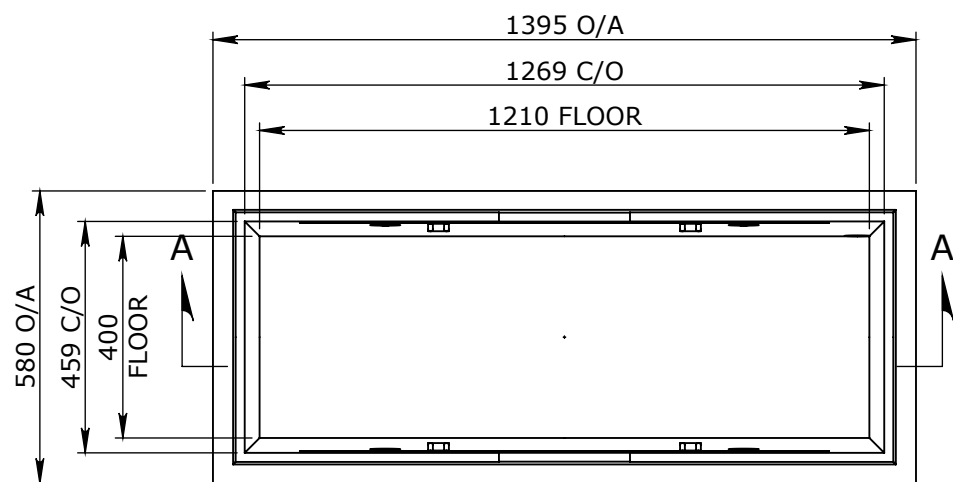


CONCRETE PRODUCT NOTE:

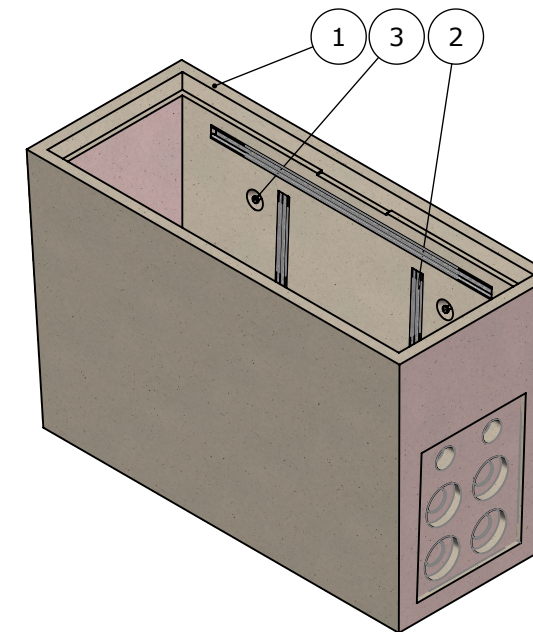
1. REFER TO GENERAL TOLERANCES UNO
2. REFER TO DRAWING 524165 GENERAL ARRANGEMENT
3. REFER TO DRAWING 524140-REO FOR REO DETAIL
4. 40MPA FIBRE REINFORCED CONCRETE (FIBRECON MP47@5Kg/M³)
5. ALL LIFTING POINTS TO BE USED WHEN LIFTING
6. MINIMUM STRENGTH OF CONCRETE SHALL BE 25MPA AT THE TIME OF LIFTING
7. COVER TO REINFORCEMENT TO BE 25 mm
8. REFER TO ANCON LIFTING ARRANGEMENT PLAN
9. CONCRETE VOLUME (M³) = 0.2

BOM:50202564_CATALOGUE ITEM

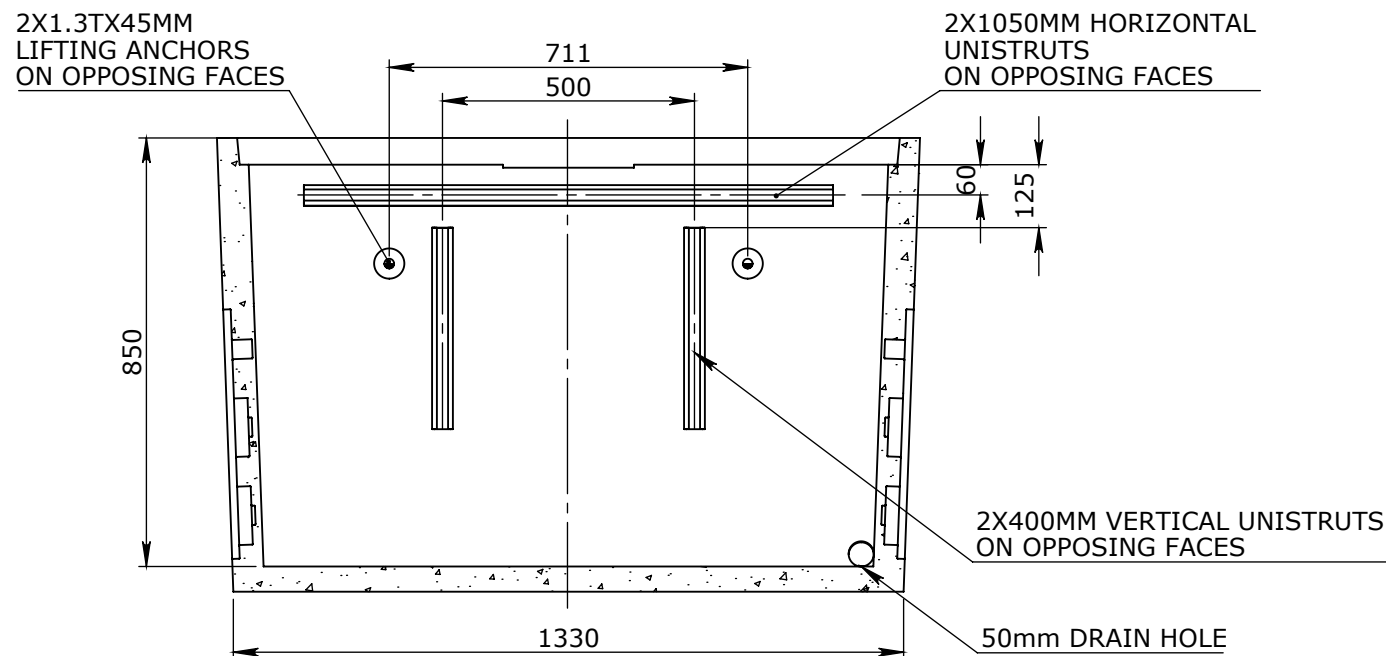
| ITEM # | QTY. | PART # | DESCRIPTION | MATERIAL | VOLUME |
|--------|------|----------|----------------------------|----------------------|--------|
| 1 | 1 | 50201039 | CONCRETE FIBRE 40MPA | CONCRETE FIBRE 40MPa | 0.2 |
| 2 | 4 | 50201101 | UNISTRUT ZP 3000mm | GALVANIZED STEEL | |
| 3 | 4 | 50201269 | FOOT ANCHOR GALV 1.3Tx45mm | | |



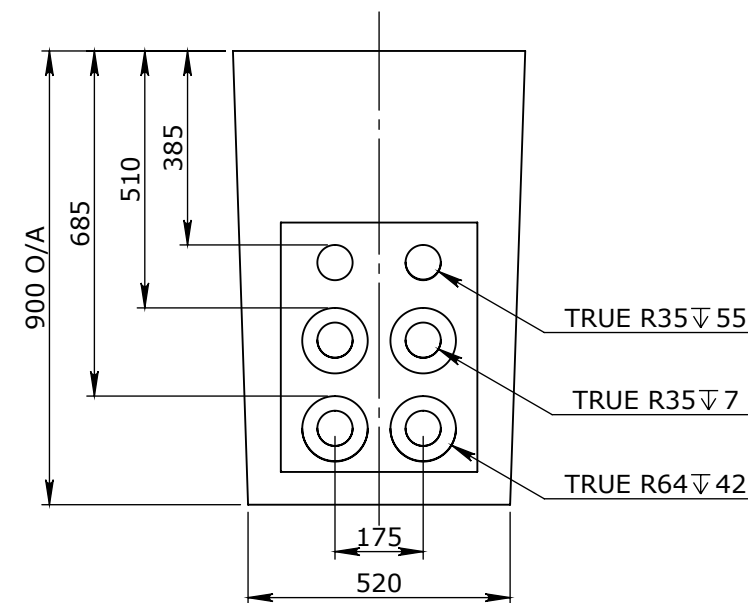
PLAN VIEW



ISOMETRIC VIEW
SCALE 1:20



SECTION A-A



END VIEW
BOTH ENDS WITH KNOCKOUTS

UNCONTROLLED DOCUMENT WHEN PRINTED

TOLERANCE NOTES:

1. CONCRETE TOLERANCES TO BE INCONJUNCTION / ACCORDANCE WITH AS3600 - CONCRETE STRUCTURES
2. WHEN A BROOME FINISH IS REQUIRED THE GENERAL TOLERANCE SUPERCEEDS THE FLATNESS TOLERANCE
3. WALL THICKNESS - DIMENSION AS NOTED IS MINIMUM THICKNESS ONLY
4. CONCRETE GRADE - 40MPA UNLESS NOTED OTHERWISE
5. DIMENSIONS ARE NOT INCLUSIVE OF SEALANTS OF JOINTS
6. SURFACE FINISH - CLASS 4 (AS3610.1)

| Rev | DESCRIPTION | DATE | BY | APPROVED |
|-----|-------------|------|----|----------|
| 3 | | | | |
| 2 | | | | |
| 1 | | | | |

| GENERAL TOLERANCES | | REVISION CONTROL | |
|--------------------|--------------|--------------------------------------|---|
| NOMINAL: | UP TO 1000mm | 1M AND ABOVE | FLATNESS: (NOT INCLUDING BROOME FINISH) |
| TOLERANCE: | ±5mm | 1mm IN 200mm UP TO A MAXIMUM OF 20mm | ±4mm PER 1M WIDTH IN 1M LENGTH |

| | |
|------------------|----------------------|
| CHK / APPR: | |
| DATE: | |
| RPEQ DOCUMENT #: | |
| WEIGHT: | 496.80Kg |
| MATERIAL: | CONCRETE FIBRE 40MPA |
| IRF REF: | |

Infrastructure Products Australia
A CRH COMPANY

HEAD OFFICE: 1 REEVES COURT, BREAKWATER, VIC 3219, 1800 065 356

ENGINEERING & DEVELOPMENT: 91 STRADBROKE STREET, HEATHWOOD, QLD 4110, (07) 3714 0444

| | |
|------------------|------------|
| DRAFTED DATE: | 14/02/2017 |
| DRAFTED BY: | MLEE |
| DATE LAST SAVED: | 26/09/2022 |
| LAST SAVED BY: | MLEE |

| | | | | | |
|---------------------------|---|---------|----------|------------|----|
| PART/PRODUCT # | 50202564 | QUOTE # | | ORDER # | |
| REINFORCEMENT COMPUTATION | | PIT # | | ITEM TYPE | |
| CLIENT | CUBIS SYSTEMS/AUSPITS | | | | |
| PROJECT DESC | CATALOGUE ITEM | | | | |
| DRAWING NAME | PIT CONCRETE UNIVERSAL 8 LOCK ADAPTABLE TO SUIT COMPOSITE COVER CLASS B | | | | |
| DRAWING # | 50202564 | PAGE | 1 / 1 | SHEET SIZE | A3 |
| SCALE | 1:15 | REV. | A | | |