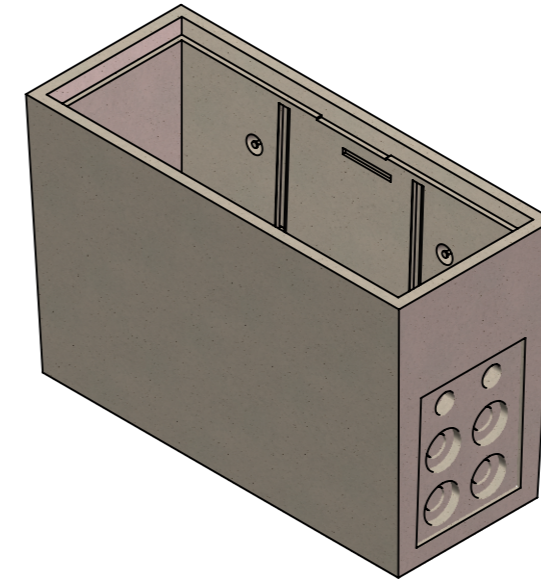


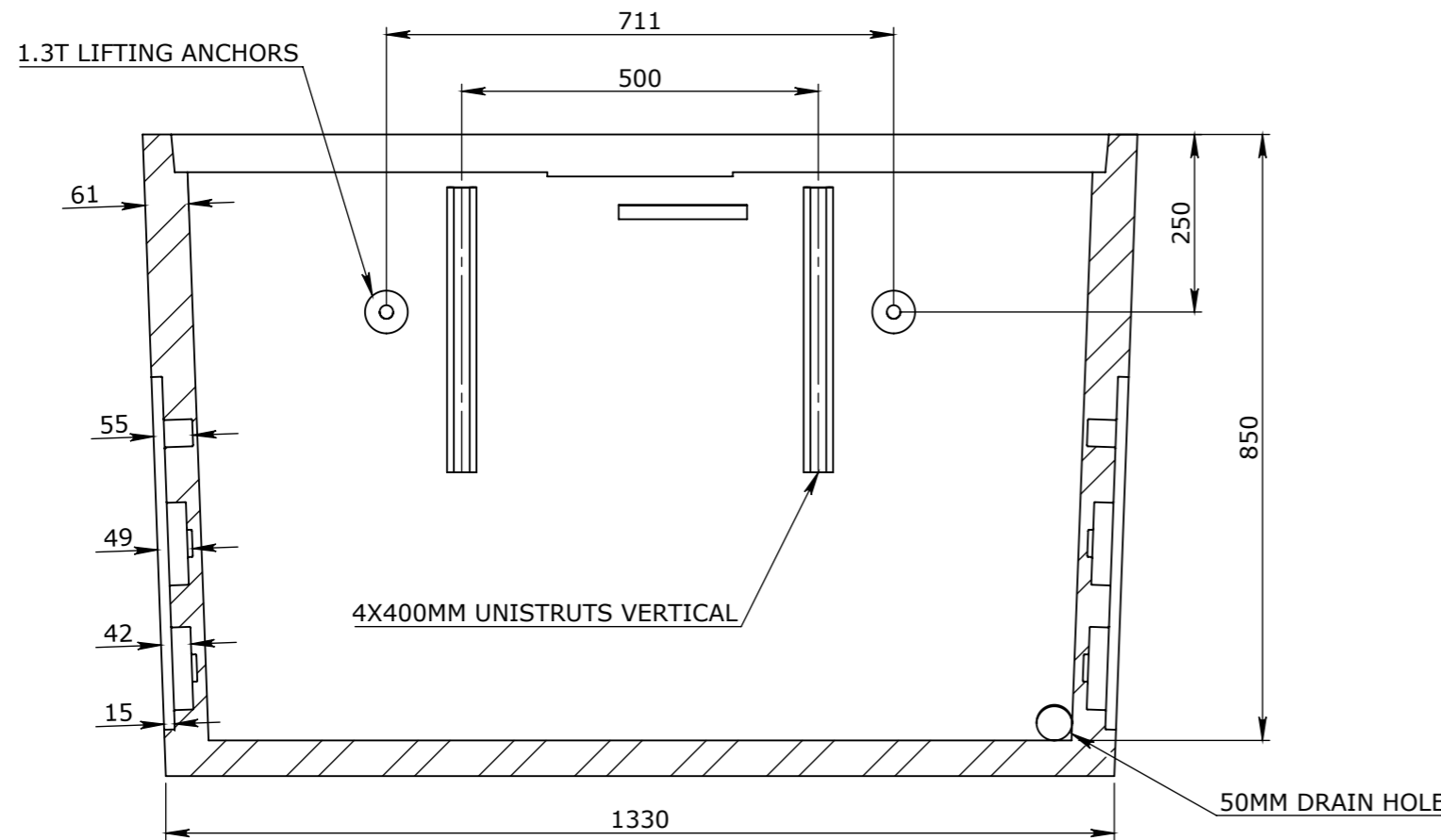
PLAN VIEW



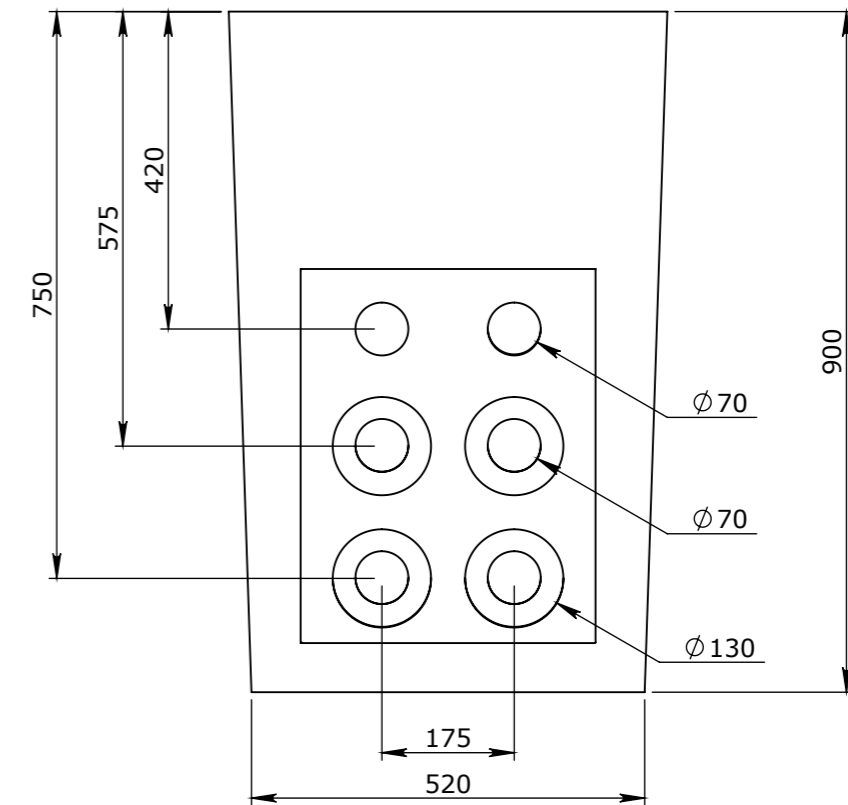
ISOMETRIC VIEW

**CONCRETE NOTE:**

1. REFER TO GENERAL TOLERANCES UNO
2. GRADE OF CONCRETE - 40MPA
3. ALL LIFTING POINTS TO BE USED WHEN LIFTING
4. MINIMUM STRENGTH OF CONCRETE SHALL BE 25MPA AT THE TIME OF LIFTING
5. REFER TO BVCI-INS-C-001 (STD INSTALLATION GUIDE) FOR INSTALLATION DETAILS
6. REFER TO ANCON LIFTING ARRANGEMENT PLAN



SECTION B-B



END VIEW

- TOLERANCE NOTES:**
1. CONCRETE TOLERANCES TO BE IN CONJUNCTION / ACCORDANCE WITH AS3600 - CONCRETE STRUCTURES
  2. WHEN A BROOME FINISH IS REQUIRED THE GENERAL TOLERANCE SUPERCEDES THE FLATNESS TOLERANCE
  3. WALL THICKNESS - DIMENSION AS NOTED IS MINIMUM THICKNESS ONLY
  4. CONCRETE GRADE - 40MPA UNLESS NOTED OTHERWISE
  5. DIMENSIONS ARE NOT INCLUSIVE OF SEALANTS OF JOINTS
  6. SURFACE FINISH - CLASS 4 (AS3610.1)

Rev	DESCRIPTION	DATE	BY	APPROVED
3	DRAIN HOLE LOCATION UPDATED	08/10/18	CA	CA
2				
1				

GENERAL TOLERANCES		REVISION CONTROL	
NOMINAL:	UP TO 1000mm	1M AND ABOVE	1601
TOLERANCE:	±5mm	1mm IN 200mm UP TO A MAXIMUM OF 20mm	±4mm PER 1M WIDTH IN 1M LENGTH

CHK / APPR: AC	DATE: 08/10/2018
RPEQ DOCUMENT #:	
WEIGHT: 5250201527.SLDPRT	
MATERIAL: MS GR-250 Kg GALV50201527.SLDPRT	

HEAD OFFICE:  
CARNINGHAM ROAD  
BALLARAT, VIC 3351  
(03) 5335 8741

ENGINEERING & DEVELOPMENT:  
2 STRADBROKE STREET  
HEATHWOOD, QLD 4110  
(07) 3714 0444

THE INFORMATION DISCLOSED IN THIS DOCUMENT IS CONFIDENTIAL AND IS NOT TO BE REPRODUCED, OR GIVEN TO ANY OTHER PARTY IN ANY FORM AND THAT ALL COPYRIGHT, DESIGNS AND PATENTS VEST IN CUBIS SYSTEMS AUSTRALIA.

DRAFTED DATE: 14/02/2017
DRAFTED BY: C.ALLARDYCE
DATE LAST SAVED: 24/10/2022
LAST SAVED BY: nbradic
DRAWN TO AS 1100 DO NOT SCALE FROM SHEET

PROJECT: BVCI GROUP CATALOGUE CONCRETE PRODUCTION CATALOGUE ITEM	NAME: J8 UNIVERSAL PIT - CLASS B	REV <b>A</b>
DRAWING No: 50201527	PROJECT / CATALOGUE CODE: 524140	SCALE UNO: 1:10
PAGE: 1/1	SHEET: A3	