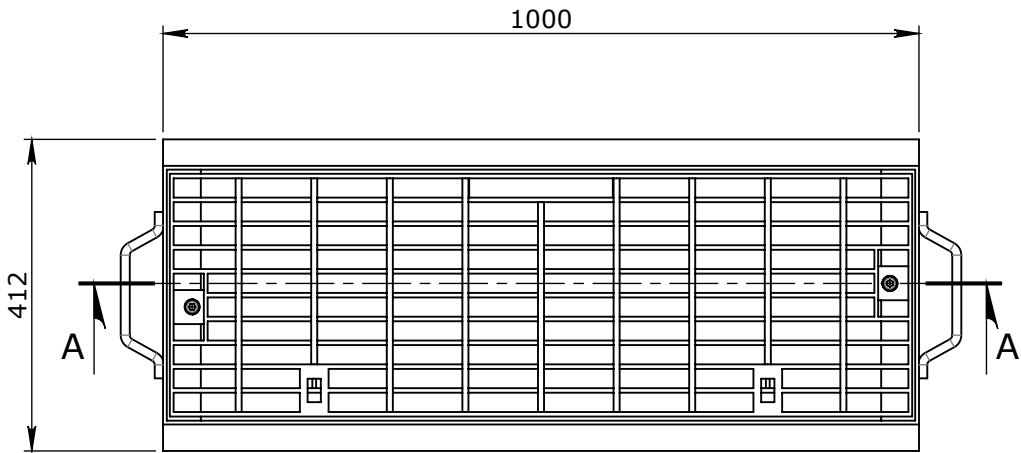


- FABRICATION NOTE:**
1. REFER TO TOLERANCES - FABRICATION UNO
  2. WELDS TO COMPLY WITH AS 1554-1
  3. 5mm CONTINUOUS FILLET WELDS UNO
  4. ALL SHEET & PLATE PROFILES TO BE MACHINE CUT FROM .DXF FILES, SOME DIMENSIONS OMITTED
  5. REMOVE ALL BURRS & SHARP EDGES
  6. \* DENOTES FORMED/ROLLED PROFILES
  7. MATERIAL CERTIFICATE TO BE SUPPLIED

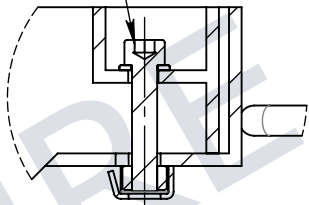
**BOM:50202877\_CATALOGUE PRODUCTS**

ITEM #	QTY.	PART #	DESCRIPTION	MATERIAL
1	1	50202877	GRATE AND FRAME GMS 900x332 B2 BOLTDOWN WITH STAINLESS STEEL CAP HEADS M10x50 CLASS D (G93GB2)	MS GR-250 GALV

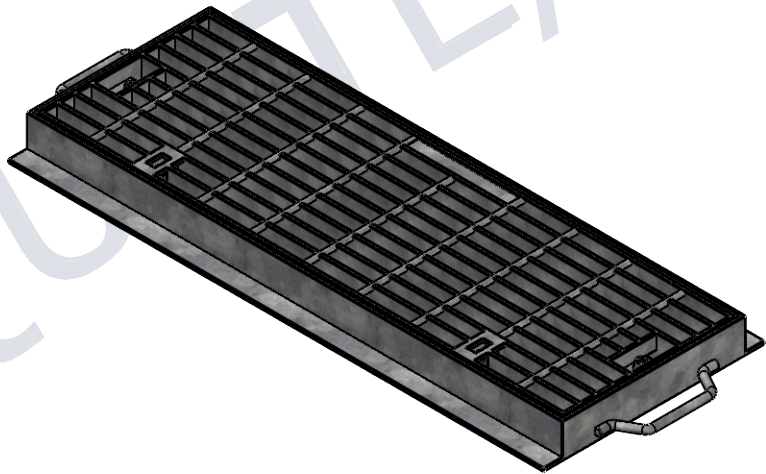


PLAN VIEW

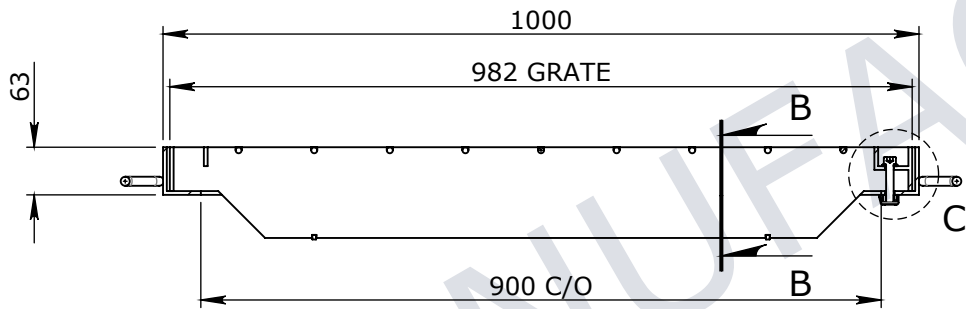
M10 x 50 STAINLESS  
SOCKET CAP HEAD BOLT



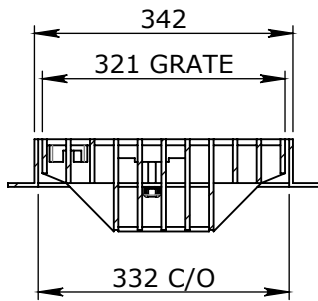
DETAIL C



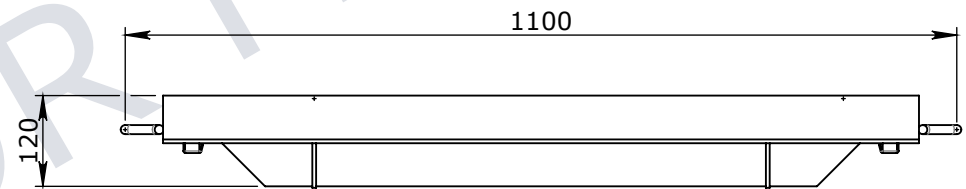
ISOMETRIC VIEW



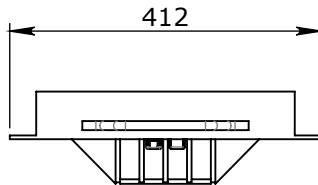
SECTION A-A



SECTION B-B



ELEVATION VIEW



END VIEW

UNCONTROLLED DOCUMENT WHEN PRINTED

1. MATERIAL SPECIFICATIONS UNO SECTIONS & FLATS - AS 3679 - GR 300+ PLATES AS 3678 - GR 250 SHS AS 1163 - GR 350 2. WELDING TO COMPLY TO AS 1554.1 UNO										CHK / APPR: <div>AC</div>		<div>Infrastructure Products Australia</div> <div>A CRH COMPANY</div>		PART/PRODUCT # 50202877		QUOTE #		ORDER #										
										DATE:				REINFORCEMENT COMPUTATION		PIT #		ITEM TYPE										
										RPEQ DOCUMENT #:				CLIENT CUBIS SYSTEMS / AUS PITS														
Rev DESCRIPTION					DATE:					BY:		ECO#:				PROJECT DESC CATALOGUE PRODUCTS												
GENERAL TOLERANCES					TOLERANCES - FABRICATION					REVISION CONTROL					WEIGHT: Kg		HEAD OFFICE: 1 REEVES COURT BREAKWATER, VIC 3219 1800 065 356											
															MATERIAL:								ENGINEERING & DEVELOPMENT: 91 STRADBROKE STREET HEATHWOOD, QLD 4110 (07) 3714 0444					
															SURFACE TREATMENT:													
NOMINAL SIZE	UP TO 150	ABOVE 150 UP TO 500	ABOVE 500	ANGULAR ∠ X.X±0°30'	LINEAR X.XX ± 0.02	FACES SQUARE ⊥ 0.05/100	ANGULAR ∠ X.X ± 0°30'DIA. CONC WITHIN⊙0.05 TIR	LINEAR X.X ± 0.1	FACES PARALLEL// 0.05/100	ANGULAR ∠ X ± 1°	EDGES CHAMFERED 1.0 x 45°	LINEAR X. ± 0.25	FACES FLAT ▱ 0.05/100	GENERAL SURFACE FINISH Ra 3.2	DRAWING NAME GRATE AND FRAME GMS 900X332 B2 BOLTDOWN WITH STAINLESS STEEL CAP HEADS M10X50 CLASS D (G93GB2)													
TOL	±1.0	±2.0	±5.0	∠ X ± 1°																	DRAWING # 50202877		PAGE 1 / 1	SHEET SIZE A3	SCALE 1:10	REV. 0		