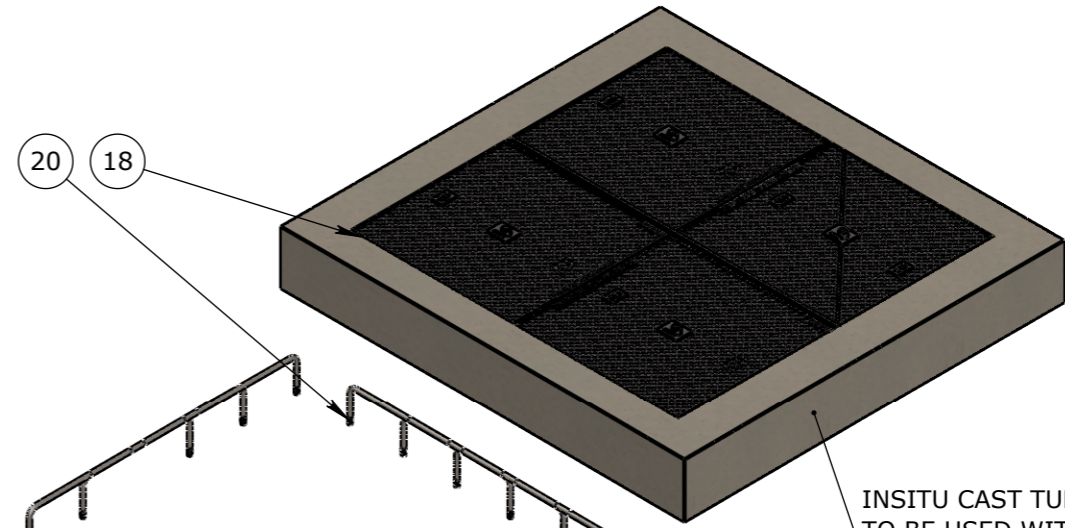
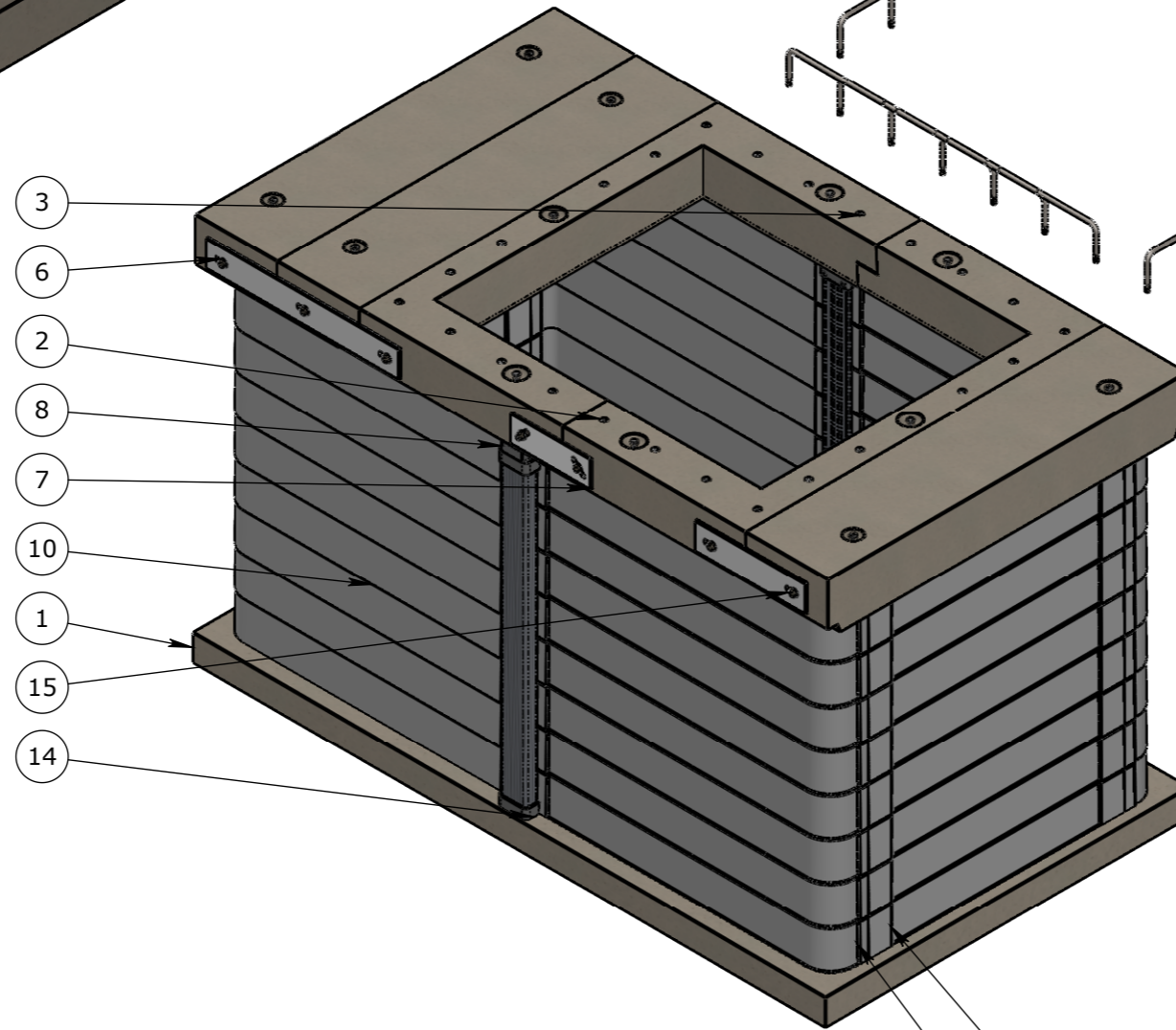


PRECAST TURRET OPTION
 TURRET CONCRETE 1635X1678X150
 TO SUIT TELSTRA 4 PART CLASS B
 P/N: 50204913
 DOES NOT REQUIRE MUSCLE START BARS

TELSTRA TWO-PART COVER OPTION IS
 AVAILABLE WITH THIS PIT -
50204914 - TURRET CONCRETE 1510X1200X150
 TO SUIT TELSTRA 2 PART CLASS B



INSITU CAST TURRET OPTION
 TO BE USED WITH M12 MUSCLE START BARS



REO M12 THREADED STARTER 500mm
 P/N: 50202592

MUSCLE START BARS SUPPLIED STRAIGHT
 (STARTER BARS TO BE BENT ON SITE)

ISOMETRIC VIEW

SCALE 1:20


UNCONTROLLED DOCUMENT WHEN PRINTED

TOLERANCE NOTES:
 1. CONCRETE TOLERANCES TO BE IN CONJUNCTION / ACCORDANCE WITH AS3600 - CONCRETE STRUCTURES
 2. WHEN A BROOME FINISH IS REQUIRED THE GENERAL TOLERANCE SUPERCEEDS THE FLATNESS TOLERANCE
 3. WALL THICKNESS - DIMENSION AS NOTED IS MINIMUM THICKNESS ONLY
 4. CONCRETE GRADE - 40MPA UNLESS NOTED OTHERWISE
 5. DIMENSIONS ARE NOT INCLUSIVE OF SEALANTS OF JOINTS
 6. SURFACE FINISH - CLASS 4 (AS3610.1)

Rev	DESCRIPTION	DATE	BY	APPROVED
3				
2				
1				

GENERAL TOLERANCES		REVISION CONTROL	
NOMINAL:	UP TO 1000mm	1M AND ABOVE	FLATNESS: (NOT INCLUDING BROOME FINISH)
TOLERANCE:	±5mm	1mm IN 200mm UP TO A MAXIMUM OF 20mm	±4mm PER 1M WIDTH MAX IN 1M LENGTH

CHK / APPR:	
DATE:	
RPEQ DOCUMENT #:	
WEIGHT:	2431Kg
MATERIAL:	<NOT SPECIFIED>
IRF REF:	



CUBIS SYSTEMS
 A CRH COMPANY

HEAD OFFICE:
 CARNHAM ROAD
 BALLARAT, VIC 3351
 (03) 5335 8741

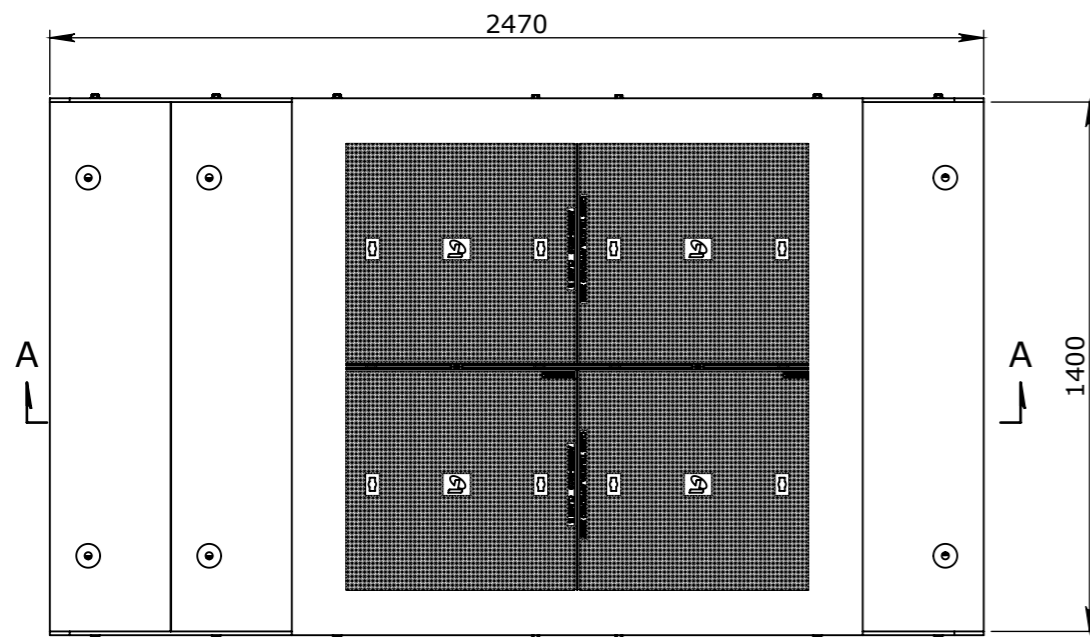
ENGINEERING & DEVELOPMENT:
 91 STRADBROKE STREET
 HEATHWOOD, QLD 4110
 (07) 3714 0444

THE INFORMATION DISCLOSED IN THIS DOCUMENT IS CONFIDENTIAL AND IS NOT WITHOUT THE EXPRESS CONSENT OF CUBIS SYSTEMS

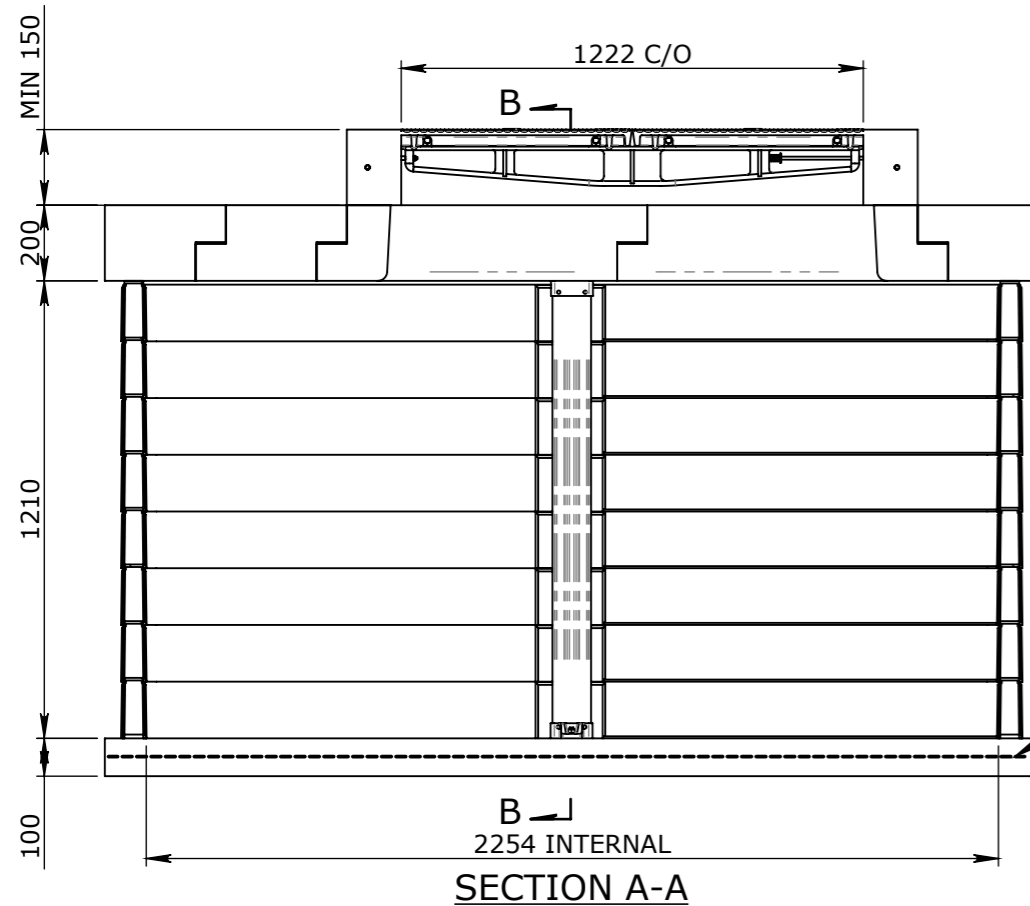
AUSTRALIA TO BE COPIED, REPRODUCED, OR GIVEN TO ANY OTHER PARTY IN ANY FORM AND THAT ALL COPYRIGHT, DESIGNS AND PATENTS VEST IN CUBIS SYSTEMS AUS.

DRAFTED DATE:	19/12/2018
DRAFTED BY:	CABEYSINGH
DATE LAST SAVED:	16/11/2021
LAST SAVED BY:	CABEYSINGH
DRAWN TO AS 1100 DO NOT SCALE FROM SHEET	

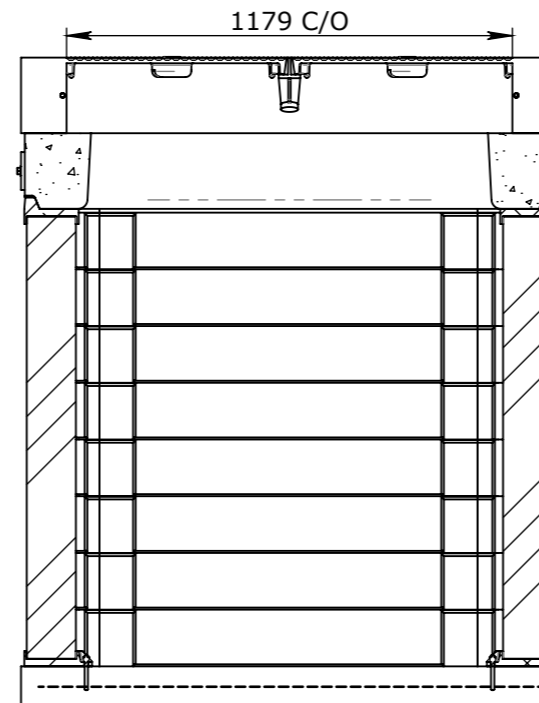
PART/PRODUCT #	REINFORCEMENT COMPUTATION	QUOTE #	PIT #	ORDER #	ITEM TYPE
CLIENT					
PROJECT DESC CUBIS SYSTEMS - CATALOGUE PRODUCTS					
DRAWING NAME PIT ULTIMA HYBRID ASSEMBLY PF4					
DRAWING #	PAGE	SHEET SIZE	SCALE	REV.	
50203764	1 / 3	A3	1:20	0	



PLAN VIEW



SECTION A-A



SECTION B-B

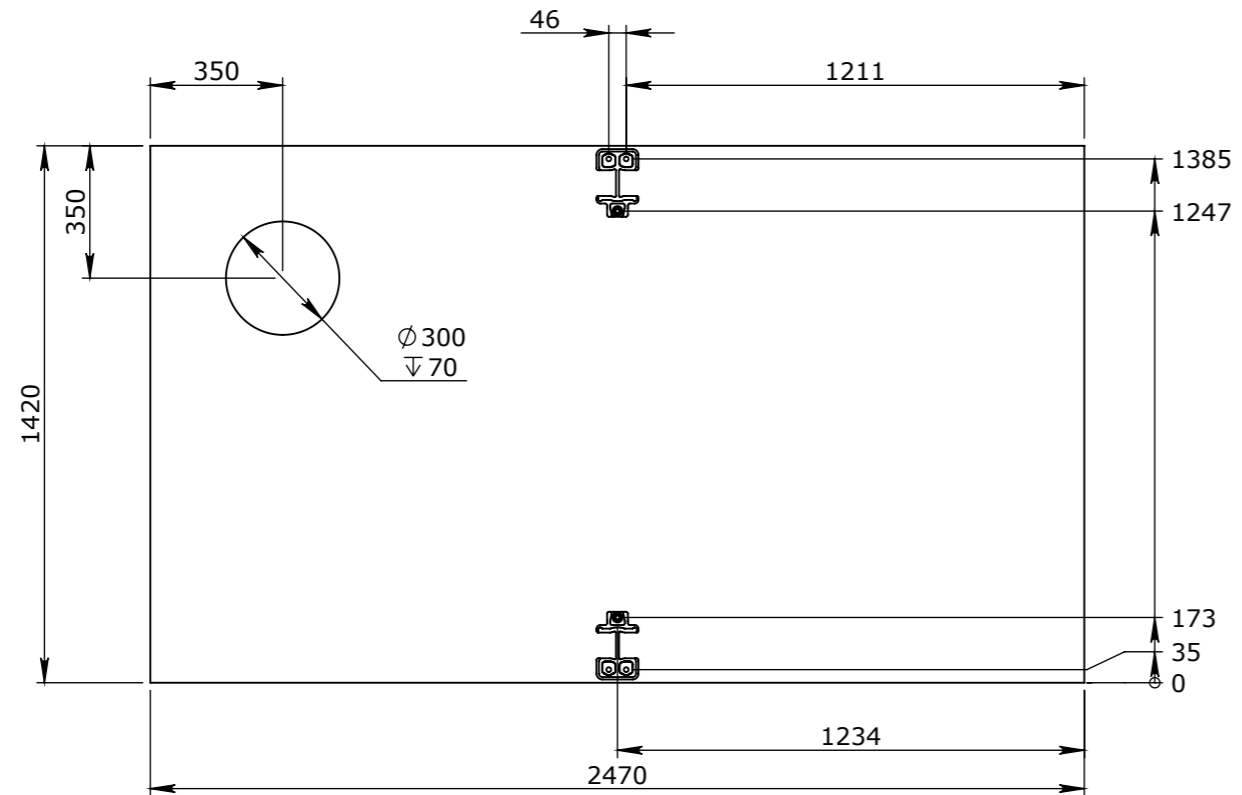
BOM:50203764

ITEM #	QTY.	PART #	EPICOR DESCRIPTION
1	1	50203764-PF4-01	INSITU CAST SLAB
2	1	50202449	SLEEPER COLLAR 1400mm TO SUIT 4 PART - PART A
3	1	50204909	SLEEPER COLLAR 1400mm TO SUIT 4 PART - PART B
4	2	50204310	SLEEPER END ULTIMA 1400mm
5	1	50204308	SLEEPER INTERMEDIATE ULTIMA 1400mm
6	2	50204694-PF4-2	ULTIMA PULTRUTION PLATE 1500X100X8MM (750mm MIN CUT LENGTH)
7	2	50202035	ULTIMA PLATE SECURING 310X100X8
8	2	50201185	ULTIMA MOUNT UPPER
9	16	50201134	STAKKABOX CONNECT SIDEWALL 1000mm
10	16	50201129	STAKKABOX CONNECT HS RIGHT 1200mm
11	16	50201128	STAKKABOX CONNECT HS LEFT 1200mm
12	32	50201133	STAKKABOX ULTIMA PEG
13	2	50201137-PF4	ULTIMA PULTRUDED BEAM CUSTOM CUT TO 1170mm
14	2	50201186	ULTIMA MOUNT LOWER
15	2	50204693-PF4-1	ULTIMA PULTRUTION PLATE 1000x100x8mm (430mm MIN. CUT LENGTH)
16	14	50201043	WASHER FLAT ZP M12
17	14	50201355	BOLT HEX ZP M12X25 CLASS 4.6
18	1	50203765-PF12-01	INSITU CAST TURRET C/W TELSTRA 4 PART ASSEMBLY
19	6	50204691	SLEEVE ANCHOR GALVANISED M12X75
20	24	50202592	REO M12 THREADED STARTER 500mm

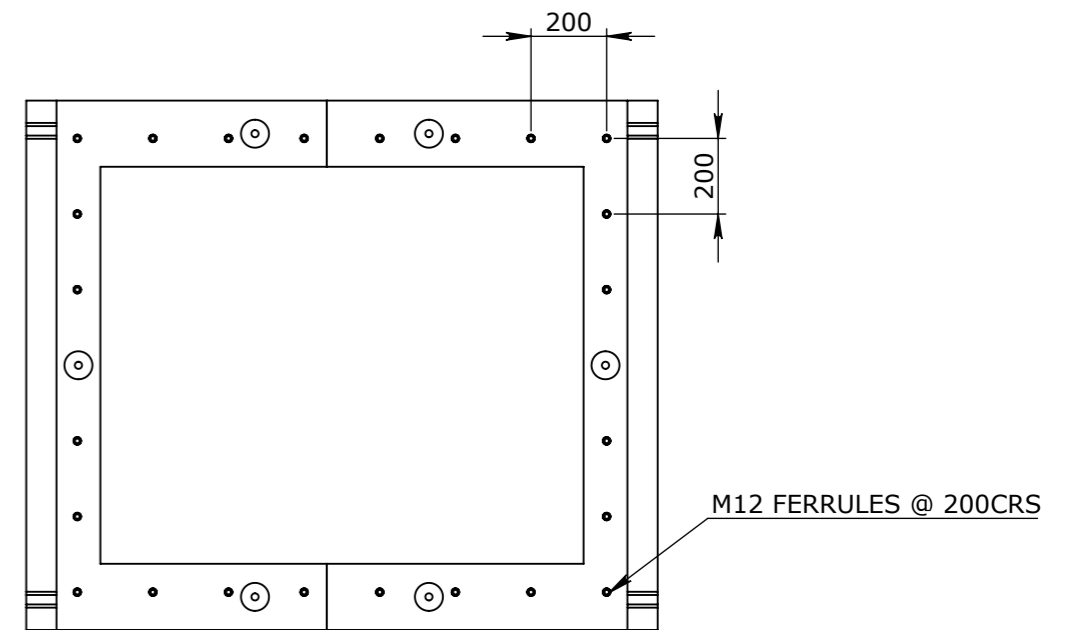
- 50203569 - (LADDER MANHOLE TELSTRA APPROVED 2400mm C/W BRACKET) TO BE SUPPLIED
- ITEMS 6 -CUT 1 OFF 50204694 INTO 750mm LENGTH TO MAKE 2 OFF 50204694-PF4-2 ON SITE
- ITEMS 15 -CUT 1 OFF 50204693 INTO 430mm LENGTH TO MAKE 2 OFF 50204693-PF4-1 ON SITE

NOTE:
REFER TO FOLLOWING DOCUMENTS FOR INSTALLATION INSTRUCTIONS FOR MANHOLE COMPONENTS AND LADDER
 1. **DRAWING [CUBIS-INS-01]**
 2. **CUBIS SYSTEMS_TELSTRA ULTIMA HYBRID MANHOLE WORK INSTRUCTION**

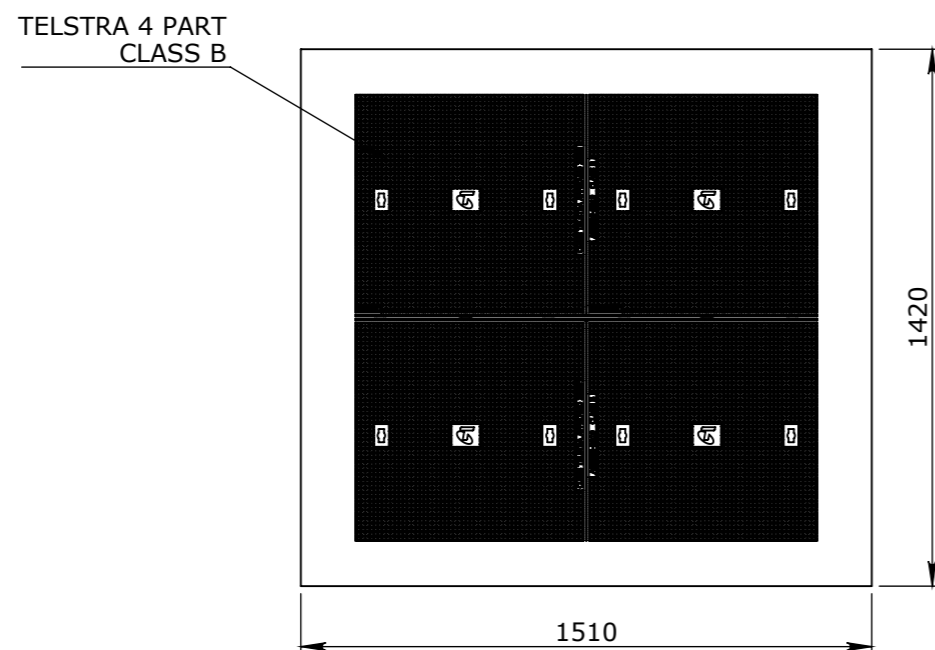
	VICTORIA: CARNHAM ROAD BALLARAT, VIC 3351 QLD: 91 STRADBROKE STREET HEATHWOOD, QLD 4110	NAME: PIT ULTIMA HYBRID ASSEMBLY PF4	REV 0
	DRAWN TO AS 1100 DO NOT SCALE FROM SHEET	DRAWING No: 50203764	DRAFTED BY: A.CHAO
		PAGE: 2/3	SHEET: A3
			SCALE UNO: 1:20



PLAN VIEW
BASE SLAB AND BEAM CAP DETAIL



PLAN VIEW
SLEEPER COLLAR FERRULE DETAIL



PLAN VIEW
TURRET DETAIL

UNCONTROLLED DOCUMENT WHEN PRINTED

	HEAD OFFICE: CARNINGHAM ROAD BALLARAT, VIC 3351 03 5335 8741	NAME: PIT ULTIMA HYBRID ASSEMBLY PF4 - CLASS B		REV 0
	ENGINEERING & DEVELOPMENT: 2 STRADBROKE STREET HEATHWOOD, QLD 4110 07 3714 0444	DRAWING No: 50203764		
DRAWN TO AS 1100 DO NOT SCALE FROM SHEET	DRAFTED BY: ACHAO	DRAFTED DATE: 6/08/2020	PAGE: 3/3	SHEET: A3
				SCALE UNO: 1:20