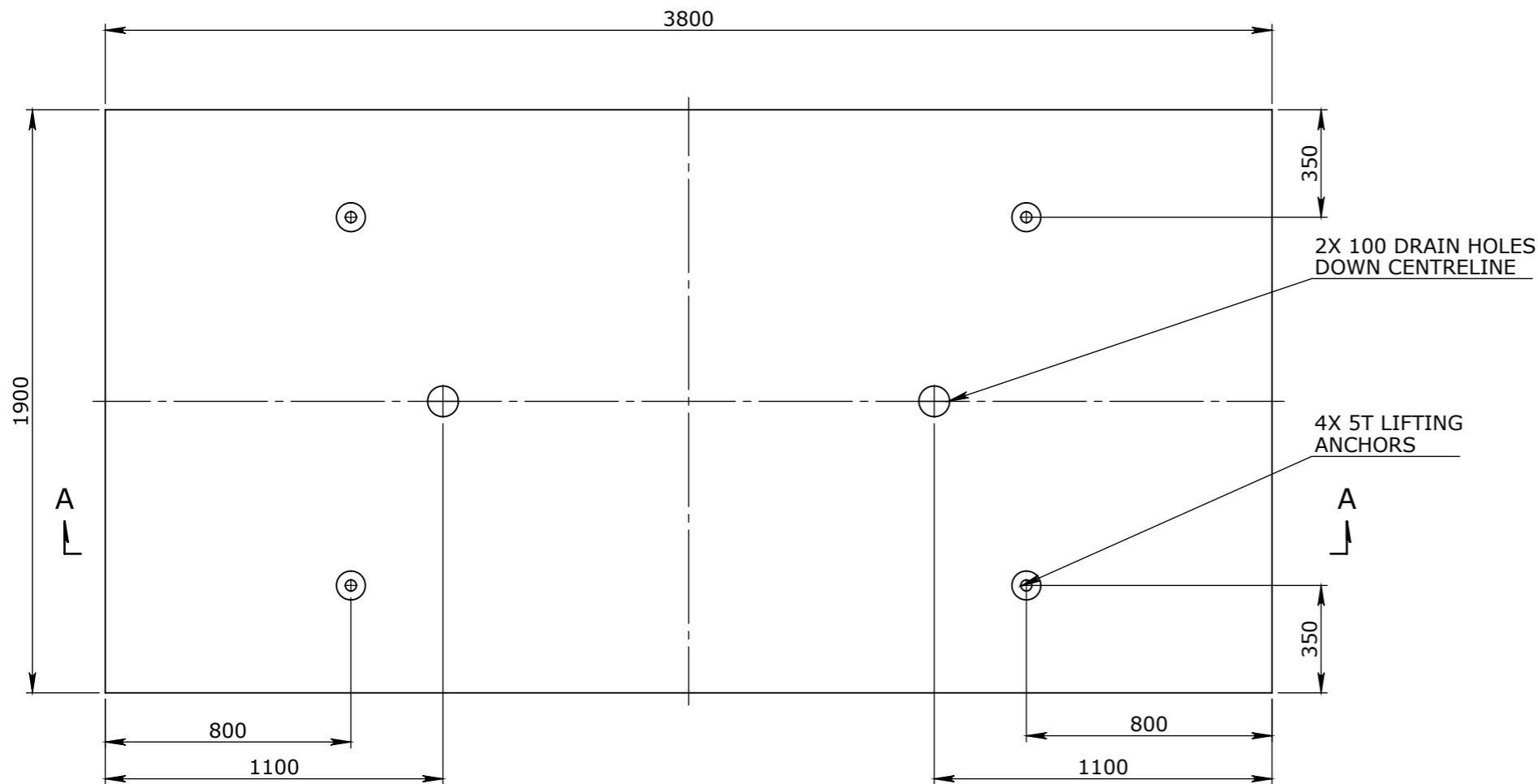


CONCRETE PRODUCT NOTE:

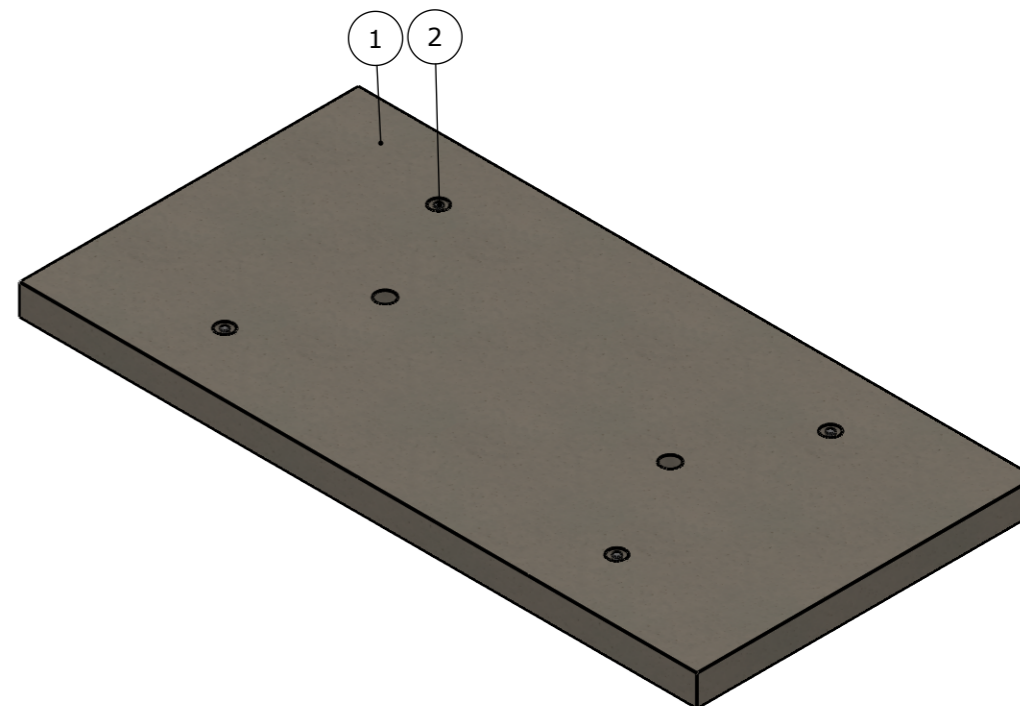
1. REFER TO GENERAL TOLERANCES UNO
2. GRADE OF CONCRETE - CONCRETE 50MPa
3. ALL LIFTING POINTS TO BE USED WHEN LIFTING
4. MINIMUM STRENGTH OF CONCRETE SHALL BE 25MPa AT THE TIME OF LIFTING
5. COVER TO REINFORCEMENT TO BE 40mm
6. REFER TO ANCON LIFTING ARRANGEMENT PLAN
7. CONCRETE VOLUME (M³) = [1.22]

BOM:50207044_FLOOR TO SUIT ULTIMA HYBRID PF20 PIT

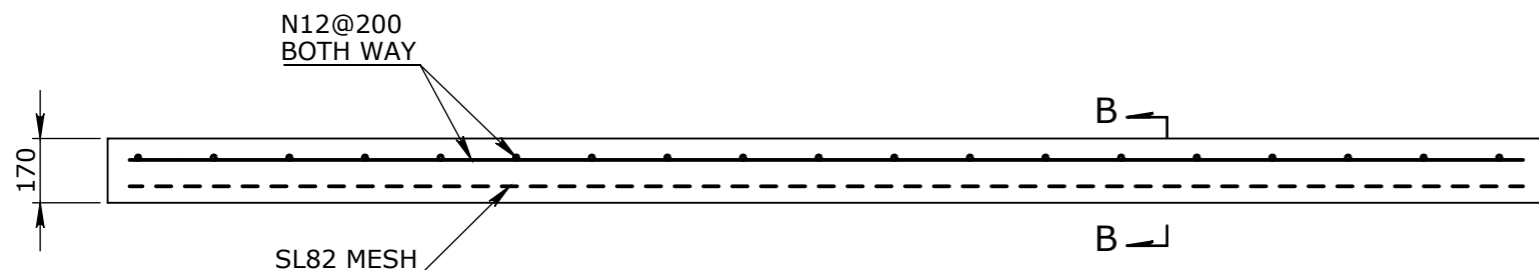
ITEM #	QTY.	PART #	DESCRIPTION	MATERIAL	VOLUME
1	1	50201266	CONCRETE 50MPa	CONCRETE 50MPa	1.22
2	4	50201286	FOOT ANCHOR ZP 5TX120MM	MS GR-250 GALV	
3	6.84	50201307	REO SL82 SHEET	DN500 STEEL	
4	73	50201086	REO N12 (M)	DN500 STEEL	



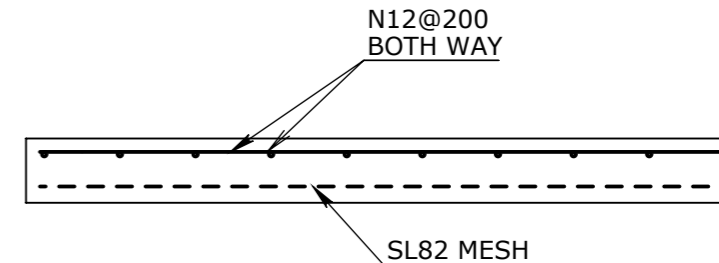
PLAN VIEW



ISOMETRIC VIEW
SCALE_1:30



SECTION A-A



SECTION B-B

UNCONTROLLED DOCUMENT WHEN PRINTED

- TOLERANCE NOTES:**
1. CONCRETE TOLERANCES TO BE INCONJUNCTION / ACCORDANCE WITH AS3600 - CONCRETE STRUCTURES
 2. WHEN A BROOME FINISH IS REQUIRED THE GENERAL TOLERANCE SUPERCEEDS THE FLATNESS TOLERANCE
 3. WALL THICKNESS - DIMENSION AS NOTED IS MINIMUM THICKNESS ONLY
 4. CONCRETE GRADE - 40MPa UNLESS NOTED OTHERWISE
 5. DIMENSIONS ARE NOT INCLUSIVE OF SEALANTS OF JOINTS
 6. SURFACE FINISH - CLASS 4 (AS3610.1)

Rev	DESCRIPTION	DATE	BY	APPROVED
3				
2				
1	CHANGE SLAB THICKNESS TO 170mm	14/12/2021	RPATERNO	

GENERAL TOLERANCES		REVISION CONTROL	
NOMINAL:	UP TO 1000mm	1M AND ABOVE	FLATNESS: (NOT INCLUDING BROOME FINISH)
TOLERANCE:	±5mm	1mm IN 200mm UP TO A MAXIMUM OF 20mm	±4mm PER 1M WIDTH IN 1M LENGTH

CHK / APPR:	AC
DATE:	
RPEQ DOCUMENT #:	
WEIGHT:	2999.0Kg
MATERIAL:	CONCRETE 50MPa
IRF REF:	

WWW.CUBIS-SYSTEMS.COM.AU
 HEAD OFFICE:
 1 REEVES COURT
 BREAKWATER, VIC. 3219
 T: 1800 065 356
 QLD
 91 STRADBROKE STREET
 HEATHWOOD, QLD 4110
 NSW
 182 ANDREWS ROAD
 PENRITH, NSW 2750

CUBIS SYSTEMS
A CRH COMPANY

THE INFORMATION DISCLOSED IN THIS DOCUMENT IS CONFIDENTIAL AND IS NOT WITHOUT THE EXPRESS CONSENT OF CUBIS SYSTEMS

AUSTRALIA TO BE COPIED, REPRODUCED, OR GIVEN TO ANY OTHER PARTY IN ANY FORM AND THAT ALL COPYRIGHT, DESIGNS AND PATENTS VEST IN CUBIS SYSTEMS AUS.

DRAFTED DATE:	8/12/2021
DRAFTED BY:	
DATE LAST SAVED:	14/12/2021
LAST SAVED BY:	RPATERNO
DRAWN TO AS 1100 DO NOT SCALE FROM SHEET	

PART/PRODUCT #	50207044	QUOTE #		ORDER #	
REINFORCEMENT COMPUTATION		PIT #		ITEM TYPE	
CLIENT	CUBIS SYSTEMS/AUSPITS				
PROJECT DESC	FLOOR TO SUIT ULTIMA HYBRID PF20 PIT				
DRAWING NAME					
DRAWING #	50207044	PAGE	1 / 1	SHEET SIZE	A3
SCALE	1:20			REV.	1