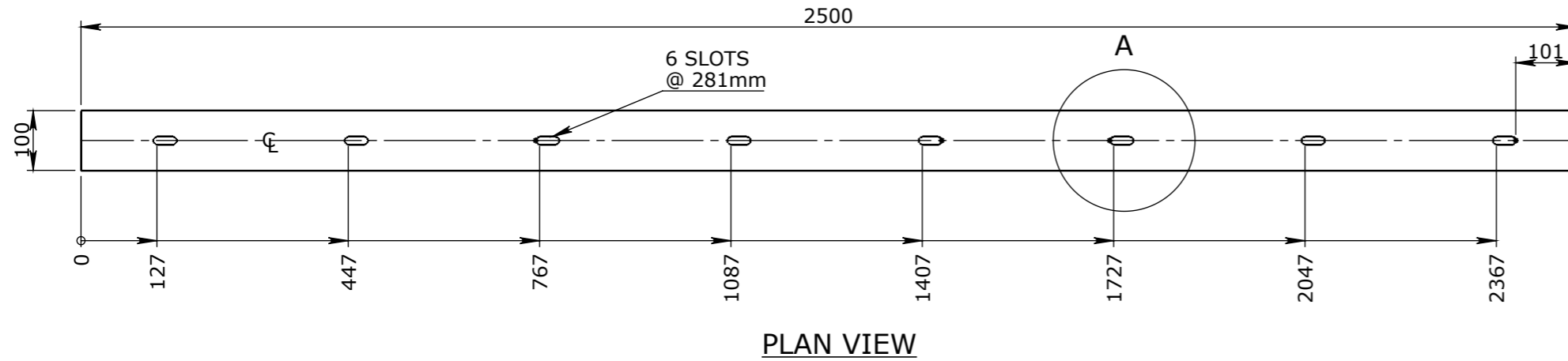
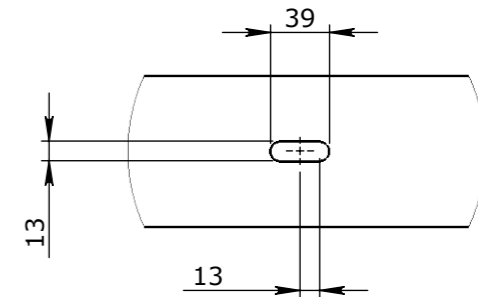
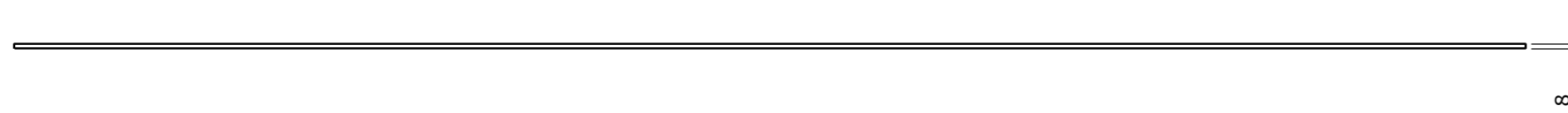


2500mm RETAINING PLATE



ISOMETRIC VIEW
SCALE_1:20



- MATERIAL SPECIFICATIONS UNO SECTIONS & FLATS - AS 3679 - GR 300+ PLATES AS 3678 - GR 250 SHS AS 1163 - GR 350
- WELDING TO COMPLY TO AS 1554.1 UNO

Rev	DESCRIPTION	DATE	BY	APPROVED
3				
2				
1				

CHK / APPR: CA
DATE:
RPEQ DOCUMENT #:



HEAD OFFICE:
CARNGHAM ROAD
BALLARAT, VIC 3351
(03) 5335 8741

ENGINEERING & DEVELOPMENT:
2 STRADBROKE STREET
HEATHWOOD, QLD 4110
(07) 3714 0444

DRAFTED DATE: 17/03/2022
DRAFTED BY: R.PATERNO
DATE LAST SAVED: 31/08/2021
LAST SAVED BY: cAbeyasinghe

PROJECT: CUBIS SYSTEMS - CATALOGUE PRODUCT 2500mm RETAINING PLATE	REV 0
NAME: 2500mm RETAINING PLATE	
DRAWING No: 50202036	

GENERAL TOLERANCES				
NOMINAL SIZE	UP TO 150	ABOVE 150 UP TO 500	ABOVE 500	ANGULAR ∠ X.X±0°30'
TOL	±1.0	±2.0	±5.0	∠ X ± 1°

TOLERANCES - FABRICATION		
LINEAR X.XX ± 0.02	FACES SQUARE ⊥ 0.05/100	ANGULAR ∠ X.X ± 0°30' DIA. CONC WITHIN Ⓞ 0.05 TIR
LINEAR X.X ± 0.1	FACES PARALLEL // 0.05/100	ANGULAR ∠ X ± 1° EDGES CHAMFERED 1.0 x 45°
LINEAR X. ± 0.25	FACES FLAT ▱ 0.05/100	GENERAL SURFACE FINISH Ra ^{3.2} √

REVISION CONTROL		
LINEAR X.XX ± 0.02	FACES SQUARE ⊥ 0.05/100	ANGULAR ∠ X.X ± 0°30' DIA. CONC WITHIN Ⓞ 0.05 TIR
LINEAR X.X ± 0.1	FACES PARALLEL // 0.05/100	ANGULAR ∠ X ± 1° EDGES CHAMFERED 1.0 x 45°
LINEAR X. ± 0.25	FACES FLAT ▱ 0.05/100	GENERAL SURFACE FINISH Ra ^{3.2} √

WEIGHT: 15Kg
MATERIAL: MS GR-250 GALV
SURFACE TREATMENT:

THE INFORMATION DISCLOSED IN THIS DOCUMENT IS CONFIDENTIAL AND IS NOT WITHOUT THE EXPRESS CONSENT OF CUBIS SYSTEMS AUSTRALIA TO BE COPIED, REPRODUCED, OR GIVEN TO ANY OTHER PARTY IN ANY FORM AND THAT ALL COPYRIGHT, DESIGNS AND PATENTS VEST IN CUBIS SYSTEMS AUS.

DRAWN TO AS 1100 DO NOT SCALE FROM SHEET

PROJECT / CATALOGUE CODE: 50202036	PAGE: 1 / 1	SHEET: A3	SCALE UNO: 1:10
---------------------------------------	----------------	--------------	--------------------