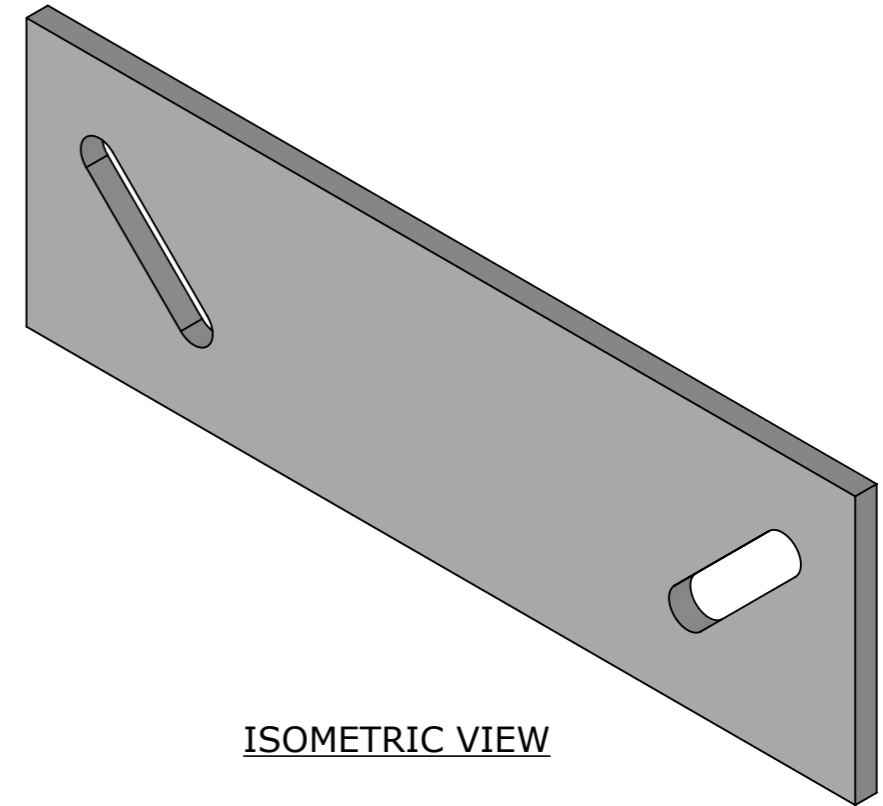
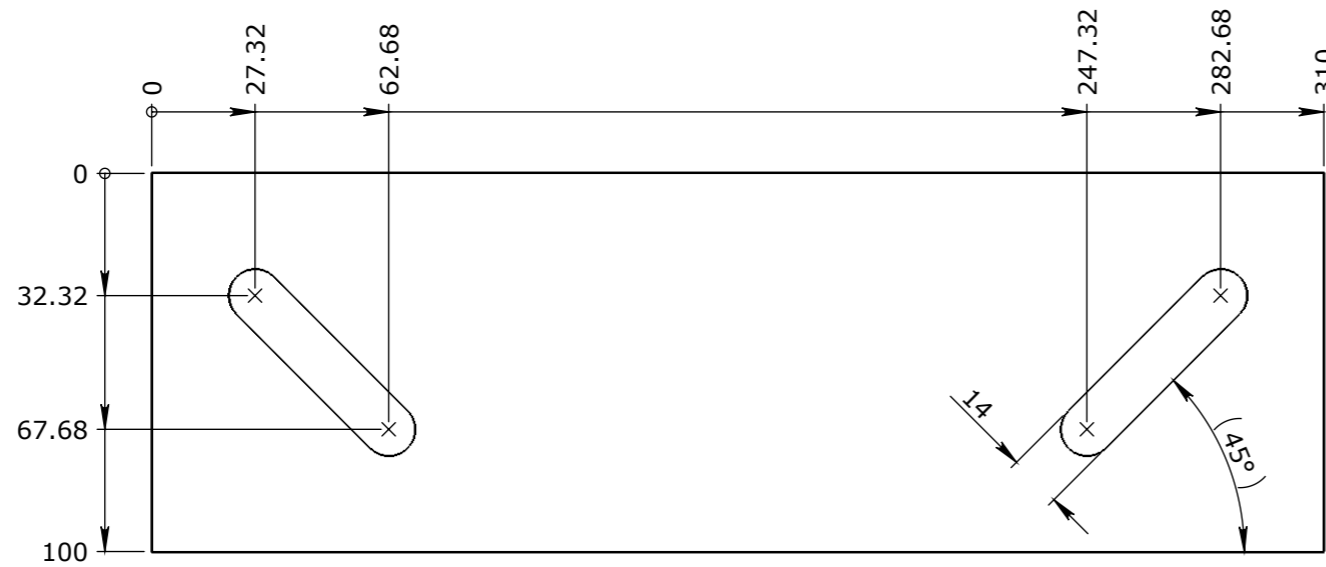


OUTSIDE;
GLASS MATTING ALL ROUND THE OUTSIDE COMBO MAT
3 LAYER MATT 3 DIRECTIONS @ 45° 1mm THICKNESS

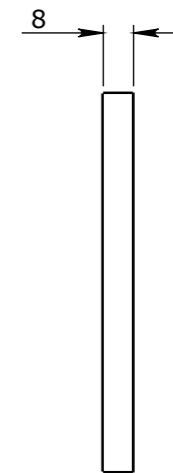
INSIDE;
CENTRE MATT & ROVING
RESIN-PU



ISOMETRIC VIEW



ELEVATION VIEW



END VIEW

- MATERIAL SPECIFICATIONS UNO
SECTIONS & FLATS - AS 3679 - GR 300+
PLATES AS 3678 - GR 250
SHS AS 1163 - GR 350
- WELDING TO COMPLY TO AS 1554.1 UNO

Rev	DESCRIPTION	DATE	BY	APPROVED
3				
2				
1				

CHK / APPR: CA
DATE:
RPEQ DOCUMENT #:

CUBIS SYSTEMS

HEAD OFFICE:
CARNHAM ROAD
BALLARAT, VIC 3351
(03) 5335 8741

ENGINEERING & DEVELOPMENT:
2 STRADBROKE STREET
HEATHWOOD, QLD 4110
(07) 3714 0444

DRAFTED DATE: 9/07/2018
DRAFTED BY:
DATE LAST SAVED: 23/07/2020
LAST SAVED BY: cAbeyinghe
DRAWN TO AS 1100 DO NOT SCALE FROM SHEET

PROJECT: CUBIS SYSTEMS CATALOGUE PULTRUDED PLATE ENGINEERING JOINING PLATE	REV 0
NAME: SECURING PLATE	
DRAWING No: 50202035	
PROJECT / CATALOGUE CODE: 50202035	
PAGE: 1 / 1	SHEET: A3
SCALE UNO: 1:2	

GENERAL TOLERANCES				
NOMINAL SIZE	UP TO 150	ABOVE 150 UP TO 500	ABOVE 500	ANGULAR ∠ X.X±0°30'
TOL	±1.0	±2.0	±5.0	∠ X ± 1°

TOLERANCES - FABRICATION		
LINEAR X.XX ± 0.02	FACES SQUARE ⊥ 0.05/100	ANGULAR ∠ X.X ± 0°30' DIA. CONC WITHIN Ⓞ 0.05 TIR
LINEAR X.X ± 0.1	FACES PARALLEL // 0.05/100	ANGULAR ∠ X ± 1° EDGES CHAMFERED 1.0 x 45°
LINEAR X. ± 0.25	FACES FLAT ▱ 0.05/100	GENERAL SURFACE FINISH Ra ^{3.2} √

REVISION CONTROL	
LINEAR X.XX ± 0.02	FACES SQUARE ⊥ 0.05/100
LINEAR X.X ± 0.1	FACES PARALLEL // 0.05/100
LINEAR X. ± 0.25	FACES FLAT ▱ 0.05/100

WEIGHT: 0.49Kg
MATERIAL: Custom Plastic
SURFACE TREATMENT:

THE INFORMATION DISCLOSED IN THIS DOCUMENT IS CONFIDENTIAL AND IS NOT WITHOUT THE EXPRESS CONSENT OF CUBIS SYSTEMS AUSTRALIA TO BE COPIED, REPRODUCED, OR GIVEN TO ANY OTHER PARTY IN ANY FORM AND THAT ALL COPYRIGHT, DESIGNS AND PATENTS VEST IN CUBIS SYSTEMS AUS.