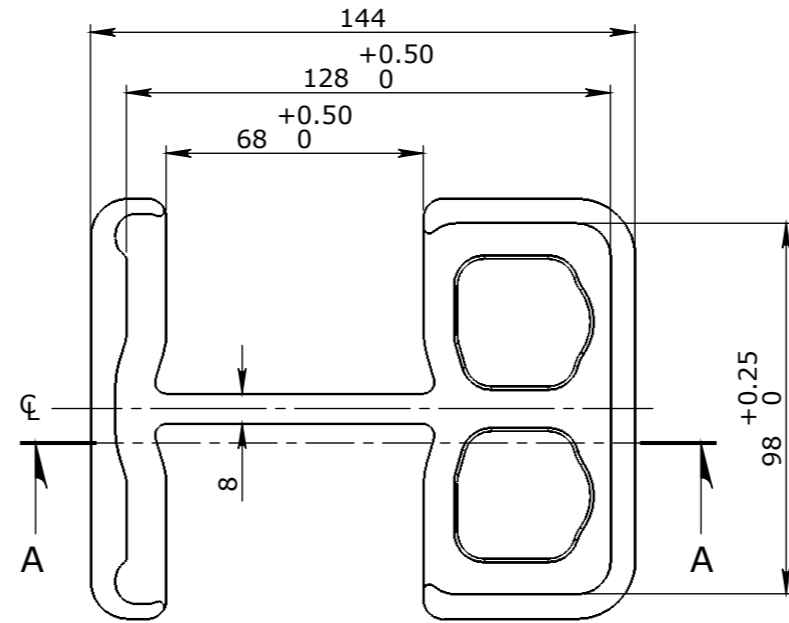
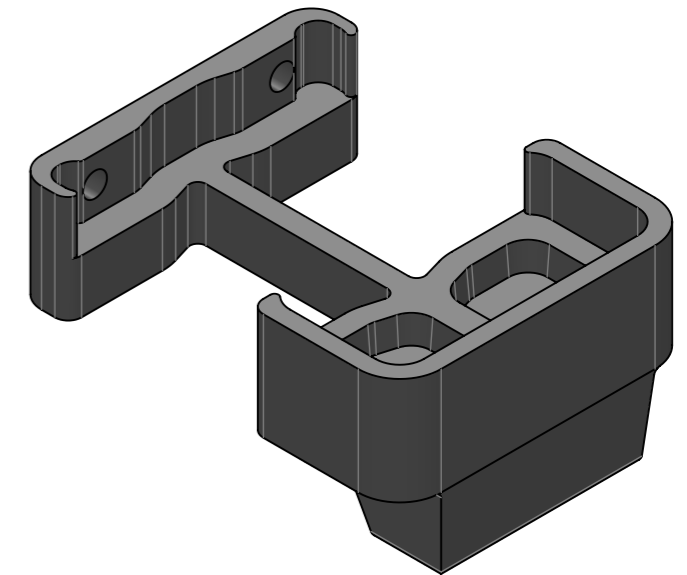


FABRICATION NOTE:

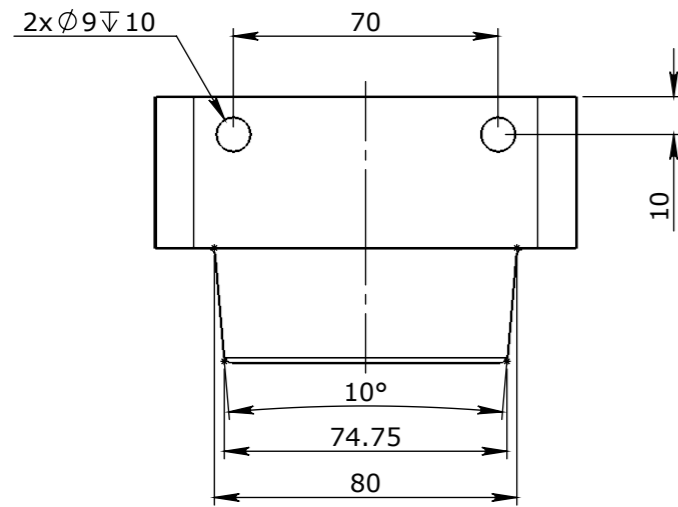
1. REFER TO TOLERANCES - FABRICATION UNO
2. WELDS TO COMPLY WITH AS 1554-1
3. 5mm CONTINUOUS FILLET WELDS UNO
4. ALL SHEET & PLATE PROFILES TO BE MACHINE CUT FROM .DXF FILES, SOME DIMENSIONS OMITTED
5. REMOVE ALL BURRS & SHARP EDGES
6. * DENOTES FORMED/ROLLED PROFILES
7. MATERIAL CERTIFICATE TO BE SUPPLIED



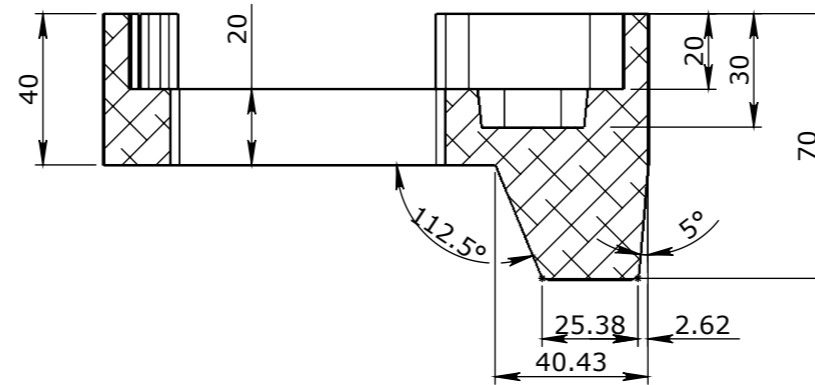
PLAN VIEW



ISOMETRIC VIEW



END VIEW



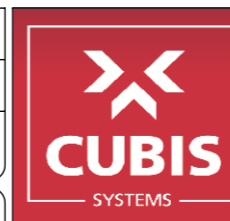
SECTION A-A

UNCONTROLLED DOCUMENT WHEN PRINTED

1. MATERIAL SPECIFICATIONS UNO
SECTIONS & FLATS - AS 3679 - GR 300+
PLATES AS 3678 - GR 250
SHS AS 1163 - GR 350
2. WELDING TO COMPLY TO AS 1554.1 UNO

Rev	DESCRIPTION	DATE:	BY:	ECO#:

CHK / APPR:	PA
DATE:	16/05/2018
RPEQ DOCUMENT #:	



HEAD OFFICE:
CARNINGHAM ROAD
BALLARAT, VIC 3351
(03) 5335 8741

ENGINEERING & DEVELOPMENT:
2 STRADBROKE STREET
HEATHWOOD, QLD 4110
(07) 3714 0444

PART/PRODUCT #	50201185	QUOTE #		ORDER #	
REINFORCEMENT COMPUTATION		PIT #		ITEM TYPE	
CLIENT	CUBIS SYSTEMS/AUSPITS				
PROJECT DESC	ULTIMA MOUNT UPPER				
DRAWING NAME	RESIN COLUMN MOUNT, UPPER				
DRAWING #	50201185	PAGE	1 / 2	SHEET SIZE	A3
SCALE	1:2	REV.	A		

GENERAL TOLERANCES				
NOMINAL SIZE	UP TO 150	ABOVE 150 UP TO 500	ABOVE 500	ANGULAR
TOL	±1.0	±2.0	±5.0	∠ X.X ± 0°30'

TOLERANCES - FABRICATION		
LINEAR X.XX ± 0.02	FACES SQUARE ⊥ 0.05/100	ANGULAR ∠ X.X ± 0°30' DIA. CONC WITHIN Ⓞ 0.05 TIR
LINEAR X.X ± 0.1	FACES PARALLEL // 0.05/100	ANGULAR ∠ X ± 1° EDGES CHAMFERED 1.0 x 45°
LINEAR X. ± 0.25	FACES FLAT ▱ 0.05/100	GENERAL SURFACE FINISH Ra 3.2

REVISION CONTROL		

WEIGHT:	0.74Kg
MATERIAL:	6061 Alloy
SURFACE TREATMENT:	

THE INFORMATION DISCLOSED IN THIS DOCUMENT IS CONFIDENTIAL AND IS NOT WITHOUT THE EXPRESS CONSENT OF CUBIS SYSTEMS AUSTRALIA TO BE COPIED, REPRODUCED, OR GIVEN TO ANY OTHER PARTY IN ANY FORM AND THAT ALL COPYRIGHT, DESIGNS AND PATENTS VEST IN CUBIS SYSTEMS AUS.