

CONCRETE NOTE:

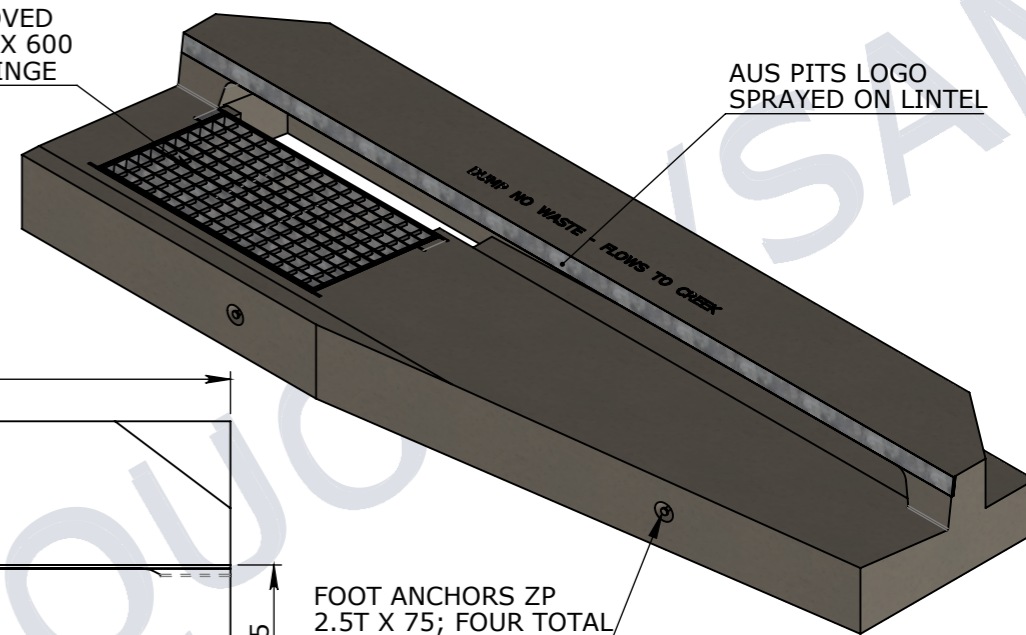
- REFER TO GENERAL TOLERANCES UNO
- GRADE OF FIBRE CONCRETE - 50MPA COMPLIES WITH MRTS273
- ALL LIFTING POINTS TO BE USED WHEN LIFTING
- MINIMUM STRENGTH OF CONCRETE SHALL BE 25MPA AT THE TIME OF LIFTING
- REFER TO PRECAST CONCRETE INSTALLATION GUIDE V.1 2019 FOR INSTALLATION DETAILS
- REFER TO ANCON LIFTING ARRANGEMENT PLAN
- KERB UNITS COMPLY WITH BELOW TMR STANDARDS
 - MRTS72
 - MRTS71
 - MRTS70
 - MRTS78
 - MRTS03
 - MRTS273
- GRATE AND FRAME COMPLY WITH AS3996:2019 FOR CLASS D LOAD RATING
- KERB UNITS COMPLY WITH TMR SD 1443 & 1444 TESTING CRITERIA
- EXPOSURE CLASSIFICATIONS - B2 AS PER AS3600:2017 DESIGN LIFE 50 YEARS AS PER AS3600:2017 MINIMUM COVER TO REINFORCEMENT - 25mm

NOTE:

REINFORCEMENT DESIGN IS NOT SHOWN.
REINFORCEMENT DESIGN COMPLIES WITH TMR SD 1443 & 1444 LOADING REQUIREMENT AND OTHER TMR STANDARDS.

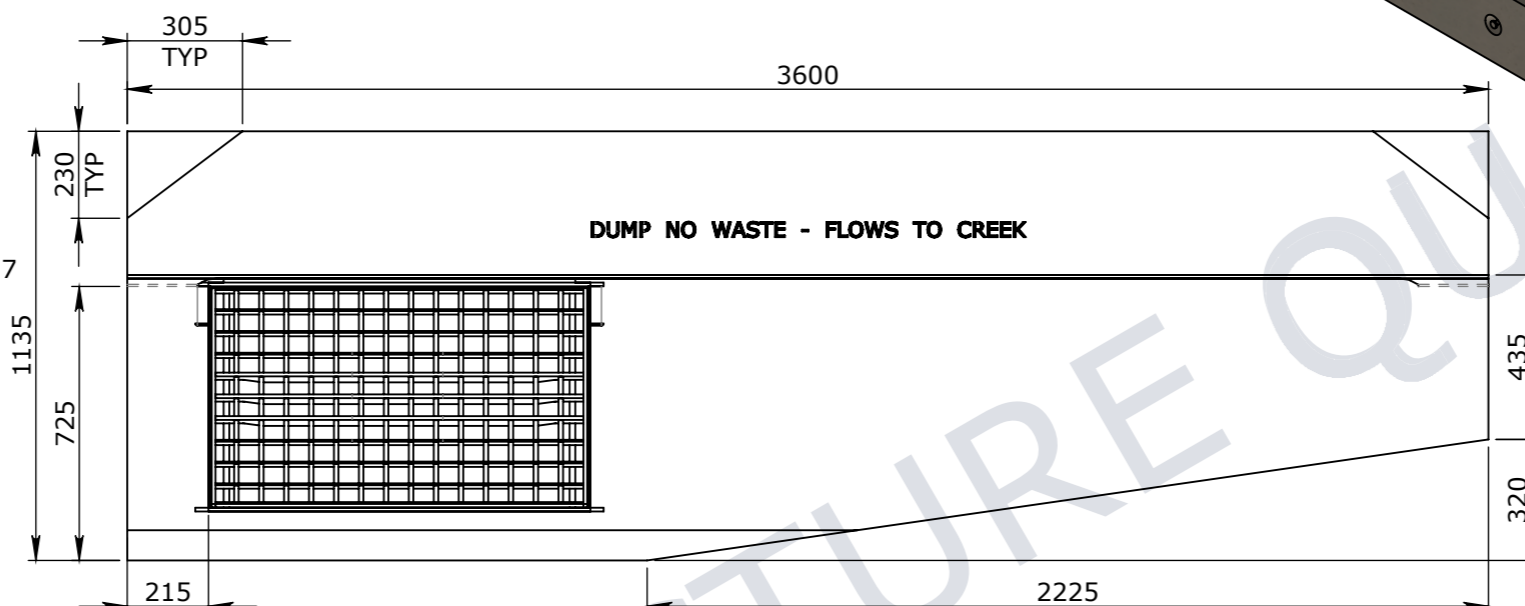
TMR APPROVED
GR/FR 900 X 600
CLASS D HINGE

AUS PITS LOGO
SPRAYED ON LINTEL

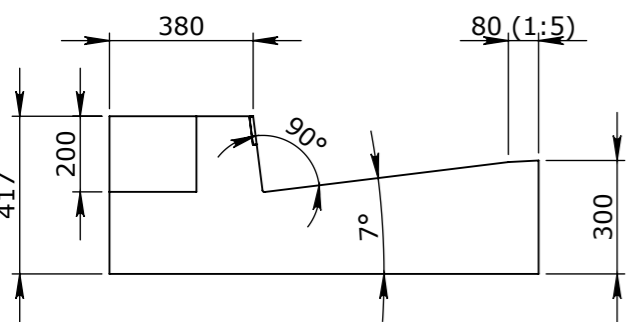


FOOT ANCHORS ZP
2.5T X 75; FOUR TOTAL

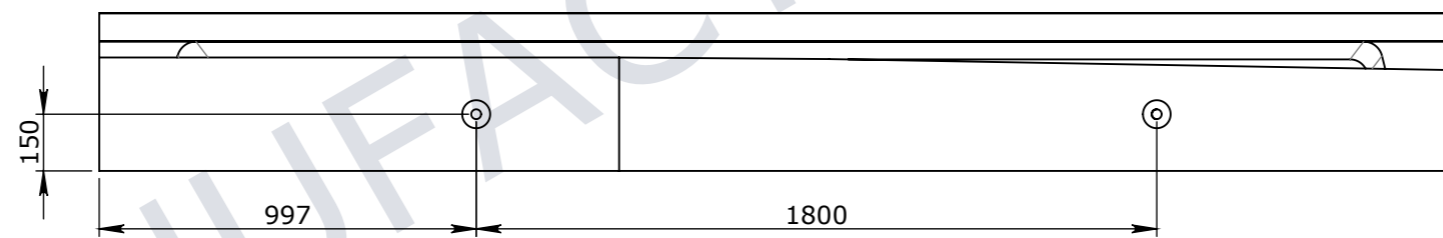
ISOMETRIC VIEW
SCALE_1:25



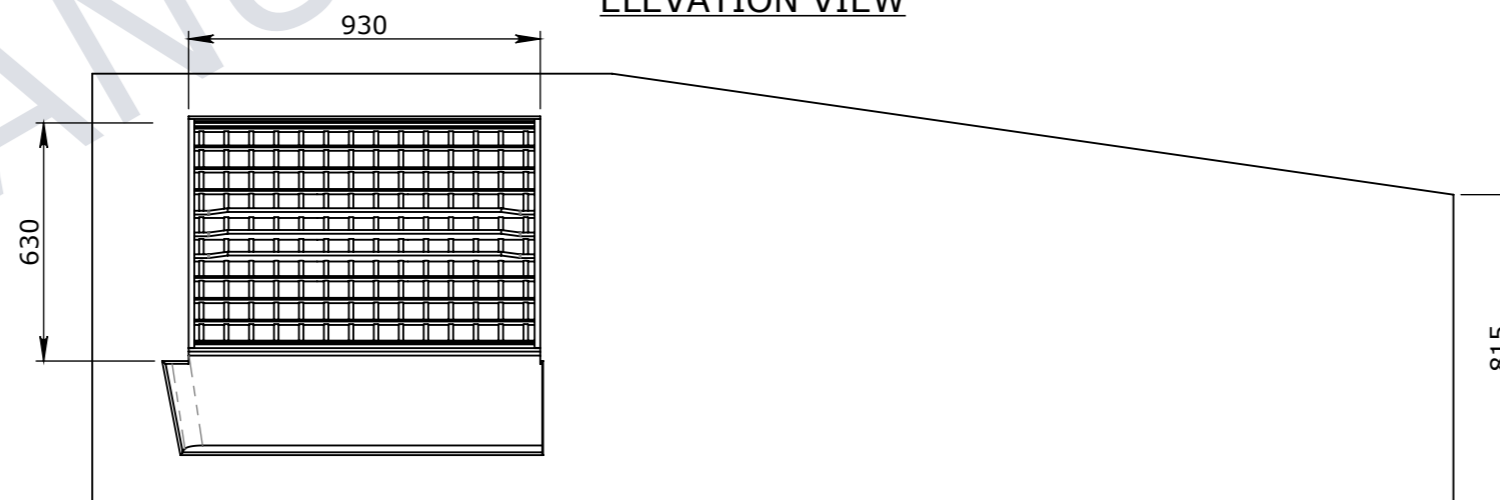
PLAN VIEW



END VIEW



ELEVATION VIEW



UNDERSIDE VIEW

UNCONTROLLED DOCUMENT WHEN PRINTED

TOLERANCE NOTES:

- CONCRETE TOLERANCES TO BE IN CONJUNCTION / ACCORDANCE WITH AS3600 - CONCRETE STRUCTURES
- WHEN A BROOME FINISH IS REQUIRED THE GENERAL TOLERANCE SUPERCEEDS THE FLATNESS TOLERANCE
- WALL THICKNESS - DIMENSION AS NOTED IS MINIMUM THICKNESS ONLY
- CONCRETE GRADE - 40MPA UNLESS NOTED OTHERWISE
- DIMENSIONS ARE NOT INCLUSIVE OF SEALANTS OF JOINTS
- SURFACE FINISH - CLASS 4 (AS3610.1)

Rev	DESCRIPTION	DATE	BY	APPROVED
3				
2				
1				

GENERAL TOLERANCES		REVISION CONTROL	
NOMINAL:	UP TO 1000mm	1M AND ABOVE	FLATNESS: (NOT INCLUDING BROOME FINISH)
TOLERANCE:	±5mm	1mm IN 200mm UP TO A MAXIMUM OF 20mm	±4mm PER 1M WIDTH IN 1M LENGTH

CHK / APPR: Abeyasingh	
DATE: Chanaka	
RPEQ DOCUMENT #:	WEIGHT: 2030.2Kg
	MATERIAL:
	IRF REF:

HEAD OFFICE:
CARNINGHAM ROAD
BALLARAT, VIC 3351
(03) 5335 8741

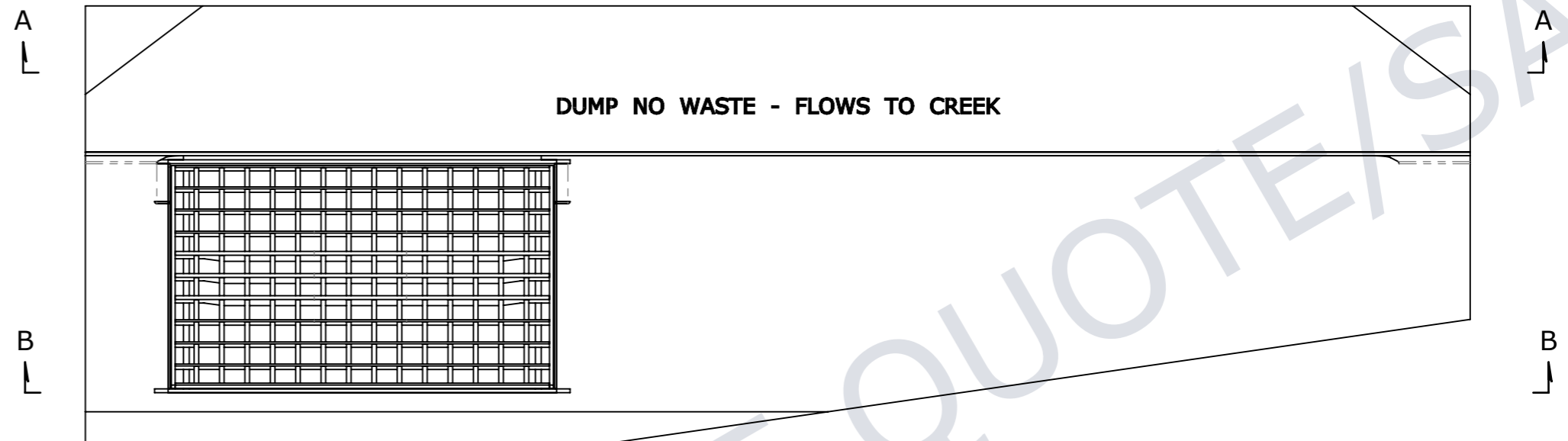
ENGINEERING & DEVELOPMENT:
91 STRADBROKE STREET
HEATHWOOD, QLD 4110
(07) 3714 0444

THE INFORMATION DISCLOSED IN THIS DOCUMENT IS CONFIDENTIAL AND IS NOT WITHOUT THE EXPRESS CONSENT OF CUBIS SYSTEMS

AUSTRALIA TO BE COPIED, REPRODUCED, OR GIVEN TO ANY OTHER PARTY IN ANY FORM AND THAT ALL COPYRIGHT, DESIGNS AND PATENTS VEST IN CUBIS SYSTEMS AUS.

DRAFTED DATE: 28/08/2020	
DRAFTED BY: DPRUSAC	
DATE LAST SAVED: 30/03/2022	
LAST SAVED BY: CABEYSINGH	
DRAWN TO AS 1100 DO NOT SCALE FROM SHEET	

PART/PRODUCT # 50207100	QUOTE #	ORDER #
REINFORCEMENT COMPUTATION	PIT #	ITEM TYPE
CLIENT DEPARTMENT OF TRANSPORT AND MAIN ROADS		
PROJECT DESC TMR KERB UNITS		
DRAWING NAME KERB UNIT INTAKE TMR KIL RIGHT HAND 3600mm		
DRAWING # 50207100	PAGE 1 / 2	SHEET SIZE A3
SCALE 1:20		REV. A

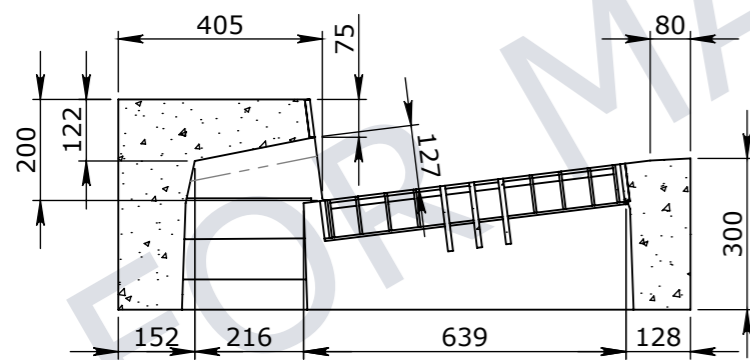


PLAN VIEW

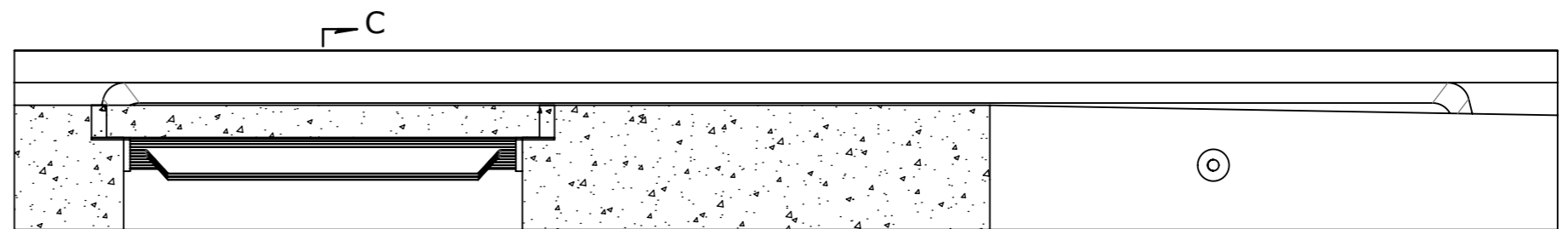
MANUFACTURER'S
BRAND IDENTITY
POSITIONED CENTRAL



SECTION A-A



SECTION C-C



SECTION B-B

UNCONTROLLED DOCUMENT WHEN PRINTED



VICTORIA:
CARNHAM ROAD
BALLARAT, VIC 3351
QLD:
91 STRADBROKE STREET
HEATHWOOD, QLD 4110
DRAWN TO AS 1100
DO NOT SCALE
FROM SHEET

NAME: TMR KERB UNITS		REV A	
DRAWING No: 50207100			
DRAFTED BY: DPRUSAC	DATE LAST SAVED: 30/03/2022	PAGE: 2/2	SHEET: A3
		SCALE UNO: 1:15	