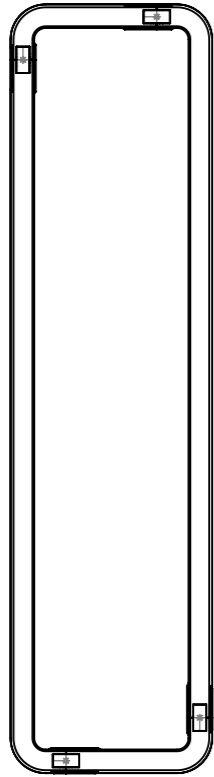
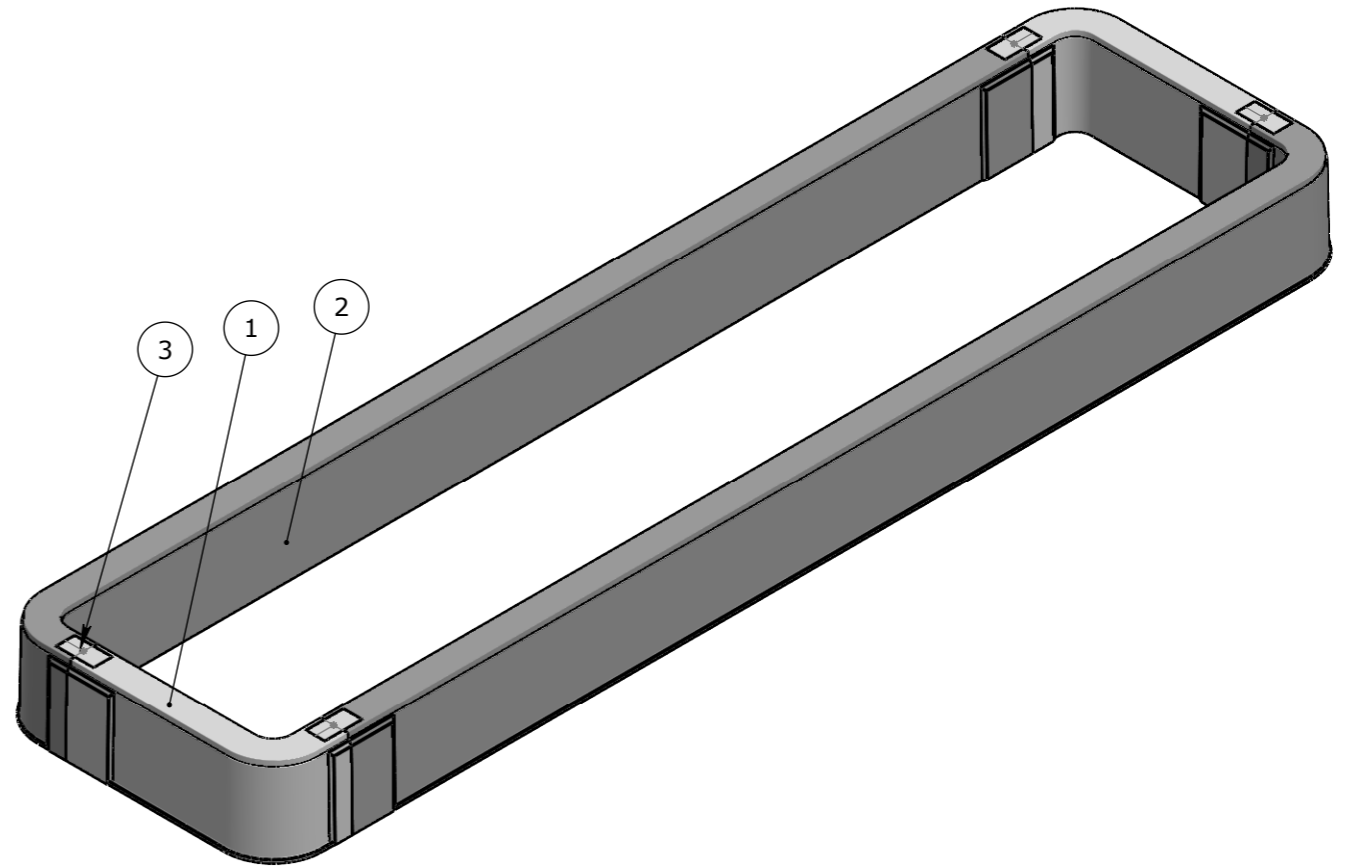


BOM:50202775

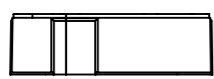
ITEM #	QTY.	PART #	DESCRIPTION	WEIGHT
1	2	50201116	STAKKABOX CONNECT HS LEFT 400mm	3.1
2	2	50201131	STAKKABOX CONNECT HS LEFT 1900mm	4.28
3	4	50201133	STAKKABOX ULTIMA PEG	217.13



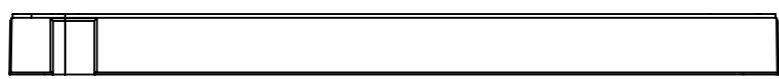
PLAN VIEW



ISOMETRIC VIEW



END VIEW



ELEVATION VIEW

SCALE_1:10

UNCONTROLLED DOCUMENT WHEN PRINTED

- TOLERANCE NOTES:**
1. CONCRETE TOLERANCES TO BE IN CONJUNCTION / ACCORDANCE WITH AS3600 - CONCRETE STRUCTURES
 2. WHEN A BROOM FINISH IS REQUIRED THE GENERAL TOLERANCE SUPERCEDES THE FLATNESS TOLERANCE
 3. WALL THICKNESS - DIMENSION AS NOTED IS MINIMUM THICKNESS ONLY
 4. CONCRETE GRADE - 40MPA UNLESS NOTED OTHERWISE
 5. DIMENSIONS ARE NOT INCLUSIVE OF SEALANTS OF JOINTS
 6. SURFACE FINISH - CLASS 4 (AS3610.1)

Rev.	DESCRIPTION	DATE	BY	APPROVED
3				
2				
1				

GENERAL TOLERANCES		REVISION CONTROL	
NOMINAL:	UP TO 1000mm	1M AND ABOVE	FLATNESS: (NOT INCLUDING BROOME FINISH)
TOLERANCE:	±5mm	1mm IN 200mm UP TO A MAXIMUM OF 20mm	±4mm PER 1M WIDTH IN 1M LENGTH

CHK / APPR:	
DATE:	
RPEQ DOCUMENT #:	
WEIGHT:	15.6Kg
MATERIAL:	<NOT SPECIFIED>
IRF REF:	

Infrastructure Products Australia
A CRH COMPANY

HEAD OFFICE:
1 REEVES COURT
BREAKWATER, VIC 3219
1800 065 356

ENGINEERING & DEVELOPMENT:
91 STRADBROKE STREET
HEATHWOOD, QLD 4110
(07) 3714 0444

DRAFTED DATE:	16/06/2022
DRAFTED BY:	N.BRADIC
DATE LAST SAVED:	16/06/2022
LAST SAVED BY:	NBRADIC
DRAWN TO AS 1100 DO NOT SCALE FROM SHEET	

ISSUED FOR CLIENT REVIEW ONLY			
ISSUE	DATE	CLIENT APPROVAL	
	16/06/2022		
PART/PRODUCT #	50202775	QUOTE #	ORDER #
REINFORCEMENT COMPUTATION		PIT #	ITEM TYPE
CLIENT	CUBIS SYSTEMS/AUSPITS		
PROJECT DESC			
DRAWING NAME			
DRAWING #	PAGE	SHEET SIZE	SCALE
50202775	1 / 1	A3	1:20