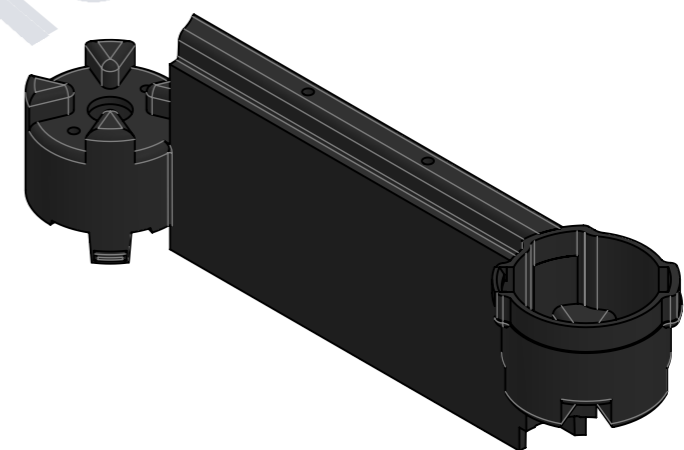
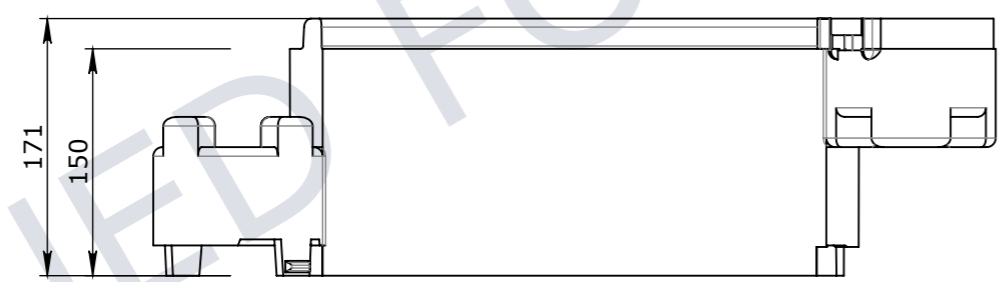


PLAN VIEW



ISOMETRIC VIEW



ELEVATION VIEW

UNCONTROLLED DOCUMENT WHEN PRINTED

- MATERIAL SPECIFICATIONS UNO SECTIONS & FLATS - AS 3679 - GR 300+ PLATES AS 3678 - GR 250 SHS AS 1163 - GR 350
- WELDING TO COMPLY TO AS 1554.1 UNO

GENERAL TOLERANCES				
NOMINAL SIZE	UP TO 150	ABOVE 150 UP TO 500	ABOVE 500	ANGULAR $\angle X.X \pm 0^{\circ}30'$
TOL	± 1.0	± 2.0	± 5.0	$\angle X \pm 1^{\circ}$

TOLERANCES - FABRICATION			REVISION CONTROL		
LINEAR X.XX ± 0.02	FACES SQUARE $\perp 0.05/100$	ANGULAR $\angle X.X \pm 0^{\circ}30'$ DIA. CONC WITHIN $\odot 0.05$ TIR	Rev	DESCRIPTION	DATE: BY: ECO#:
LINEAR X.X ± 0.1	FACES PARALLEL $\parallel 0.05/100$	ANGULAR $\angle X \pm 1^{\circ}$ EDGES CHAMFERED $1.0 \times 45^{\circ}$			
LINEAR X. ± 0.25	FACES FLAT $\nabla 0.05/100$	GENERAL SURFACE FINISH $Ra \sqrt{3.2}$			

CHK / APPR: PA	WEIGHT: 1.24Kg
DATE:	MATERIAL: Cubis Structural Foam HDPE
RPEQ DOCUMENT #:	SURFACE TREATMENT:



HEAD OFFICE:
CARNINGHAM ROAD
BALLARAT, VIC 3351
(03) 5335 8741

ENGINEERING & DEVELOPMENT:
2 STRADBROKE STREET
HEATHWOOD, QLD 4110
(07) 3714 0444

THE INFORMATION DISCLOSED IN THIS DOCUMENT IS CONFIDENTIAL AND IS NOT WITHOUT THE EXPRESS CONSENT OF CUBIS SYSTEMS AUSTRALIA TO BE COPIED, REPRODUCED, OR GIVEN TO ANY OTHER PARTY IN ANY FORM AND THAT ALL COPYRIGHT, DESIGNS AND PATENTS VEST IN CUBIS SYSTEMS AUS.

PART/PRODUCT # 50201762	QUOTE #	ORDER #
REINFORCEMENT COMPUTATION	PIT #	ITEM TYPE
CLIENT CUBIS SYSTEMS/AUSPITS		
PROJECT DESC STAKKABOX™ FORTRESS 445XD150		
DRAWING # 50201762	PAGE 1 / 1	SHEET SIZE A3
SCALE 1:5	REV. 0	