

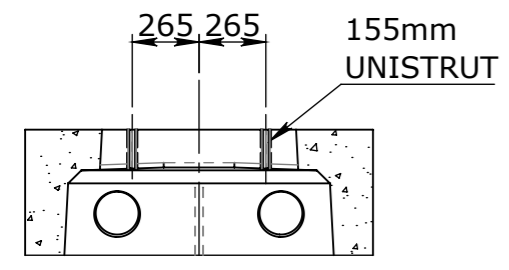
- CONCRETE PRODUCT NOTE:**
- REFER TO GENERAL TOLERANCES UNO
  - 40MPa FIBRE REINFORCED CONCRETE (FIBRECON MP47@5Kg/M<sup>3</sup>)
  - ALL LIFTING POINTS TO BE USED WHEN LIFTING
  - MINIMUM STRENGTH OF CONCRETE SHALL BE 25MPa AT THE TIME OF LIFTING
  - COVER TO REINFORCEMENT TO BE 50mm
  - REFER TO ANCON LIFTING ARRANGEMENT PLAN
  - REFER TO CUBIS PRECAST CONCRETE INSTALLATION GUIDE (V.1 2019) FOR INSTALLATION DETAILS
  - THE LIFTING PLAN IS DESIGNED BASED ON THE MAXIMUM WEIGHT
  - CONCRETE VOLUME (M<sup>3</sup>) = [2.05]

- CONSTRUCTION TOLERANCE**
- OVERALL PIT DEPTH: +0 AND -10mm
  - FLATNESS OF TOP SURFACE: +0 AND -5mm IN 1 SQM AREA

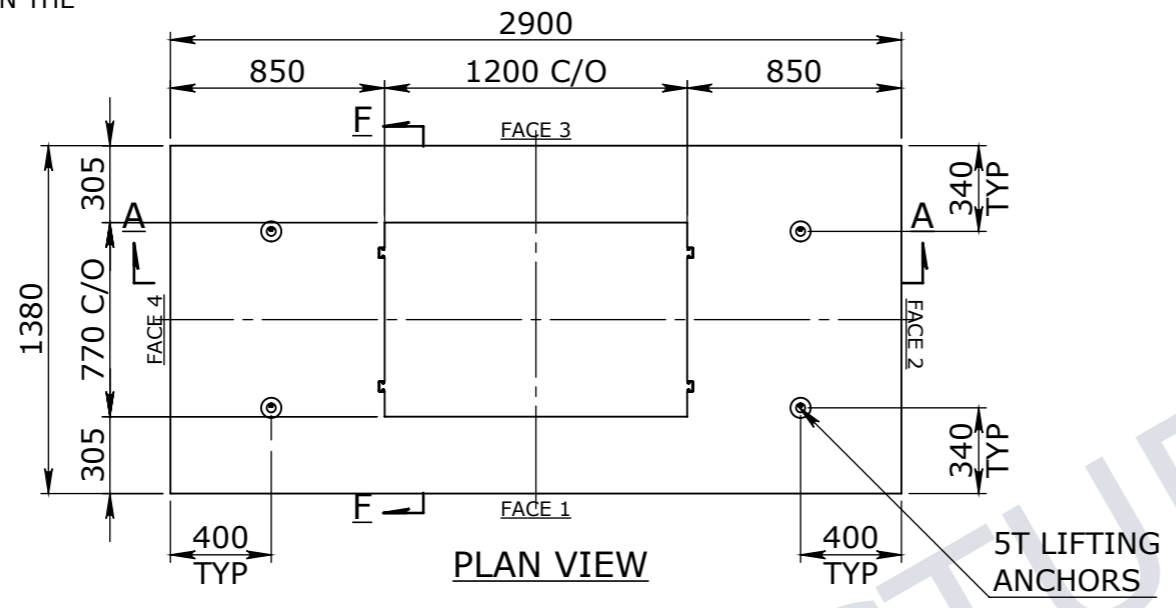
**BOM:50201475\_PIT CONCRETE MANHOLE PF12**

ITEM #	QTY.	PART #	DESCRIPTION	LENGTH	MATERIAL	VOLUME
1	1	50201039	PF12 CAST PIT		CONCRETE FIBRE 40MPA	2.05
2	6		UNISTRUT - P3300	1400	GALVANIZED STEEL	
3	4		UNISTRUT - P3300	155	GALVANIZED STEEL	
4	4	50201286	FOOT ANCHOR GALV 5Tx120mm			

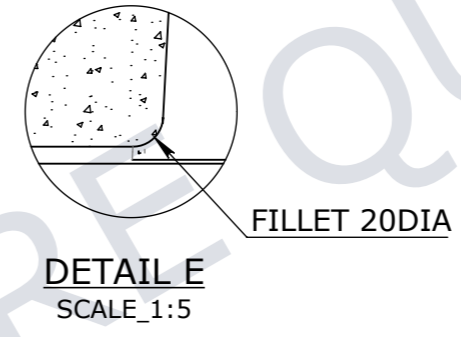
**\*\*WITHOUT BASE/FLOOR**



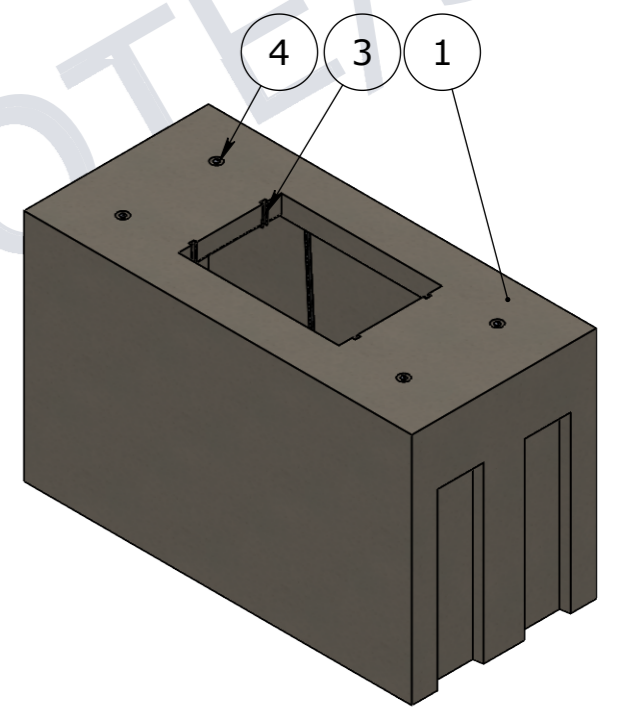
SECTION F-F



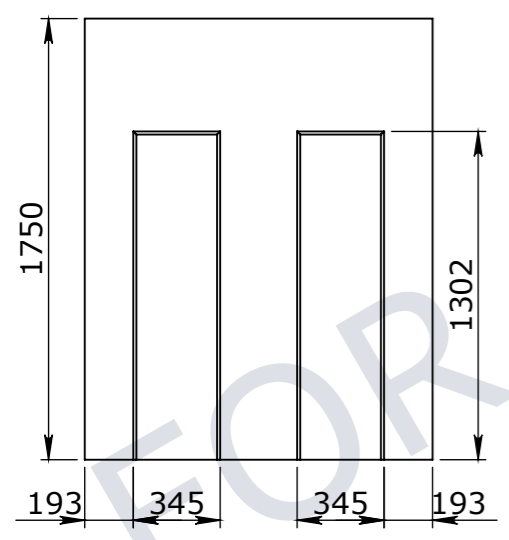
PLAN VIEW



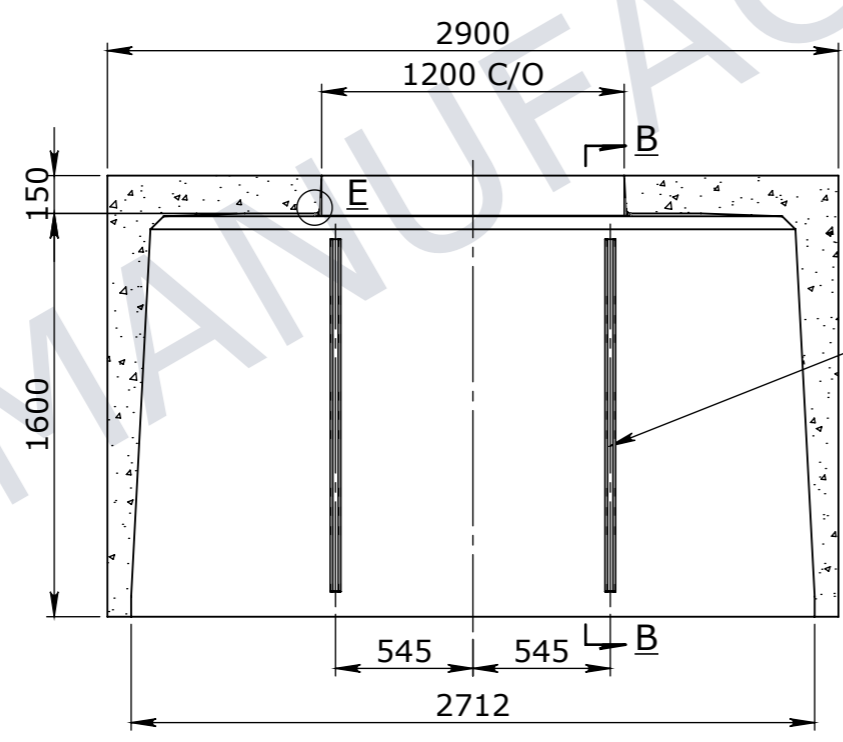
DETAIL E  
SCALE\_1:5



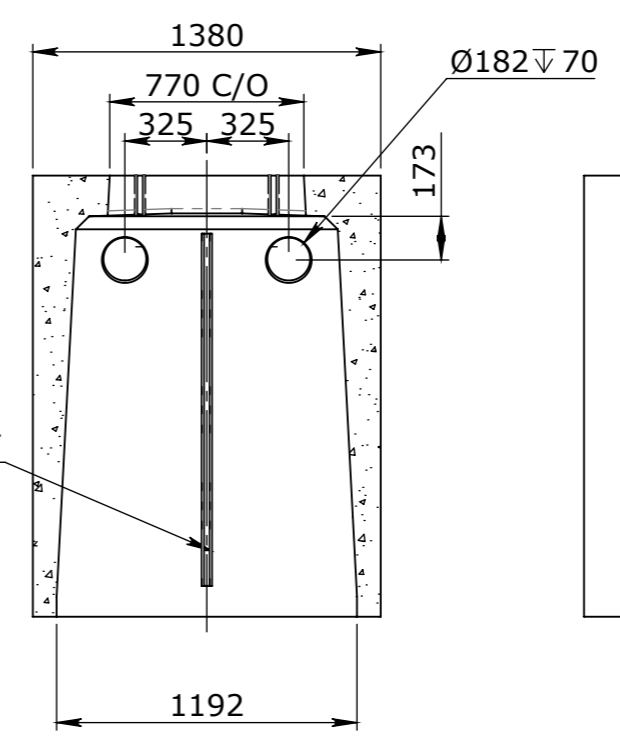
ISOMETRIC VIEW



FACE 4



SECTION A-A



SECTION B-B



FACE 3

UNCONTROLLED DOCUMENT WHEN PRINTED

- TOLERANCE NOTES:**
- CONCRETE TOLERANCES TO BE INCONJUNCTION / ACCORDANCE WITH AS3600 - CONCRETE STRUCTURES
  - WHEN A BROOME FINISH IS REQUIRED THE GENERAL TOLERANCE SUPERCEEDS THE FLATNESS TOLERANCE
  - WALL THICKNESS - DIMENSION AS NOTED IS MINIMUM THICKNESS ONLY
  - CONCRETE GRADE - 40MPA UNLESS NOTED OTHERWISE
  - DIMENSIONS ARE NOT INCLUSIVE OF SEALANTS OF JOINTS
  - SURFACE FINISH - CLASS 4 (AS3610.1)

Rev	DESCRIPTION	DATE	BY	APPROVED
3				
2				
1				

GENERAL TOLERANCES		REVISION CONTROL	
NOMINAL:	UP TO 1000mm	1M AND ABOVE	FLATNESS: (NOT INCLUDING BROOME FINISH)
TOLERANCE:	±5mm	1mm IN 200mm UP TO A MAXIMUM OF 20mm	±4mm PER 1M WIDTH IN 1M LENGTH

CHK / APPR:	AC
DATE:	
RPEQ DOCUMENT #:	
WEIGHT:	5450Kg
MATERIAL:	CONCRETE FIBRE 40MPA
IRF REF:	

**CUBIS SYSTEMS**  
A CRH COMPANY

HEAD OFFICE:  
CARNGHAM ROAD  
BALLARAT, VIC 3351  
(03) 5335 8741

ENGINEERING & DEVELOPMENT:  
91 STRADBROKE STREET  
HEATHWOOD, QLD 4110  
(07) 3714 0444

THE INFORMATION DISCLOSED IN THIS DOCUMENT IS CONFIDENTIAL AND IS NOT WITHOUT THE EXPRESS CONSENT OF CUBIS SYSTEMS

AUSTRALIA TO BE COPIED, REPRODUCED, OR GIVEN TO ANY OTHER PARTY IN ANY FORM AND THAT ALL COPYRIGHT, DESIGNS AND PATENTS VEST IN CUBIS SYSTEMS AUS.

DRAFTED DATE:	13/06/2018
DRAFTED BY:	
DATE LAST SAVED:	9/11/2021
LAST SAVED BY:	CABEYSINGH
DRAWN TO AS 1100	DO NOT SCALE FROM SHEET

PART/PRODUCT #	50201475	QUOTE #		ORDER #	
REINFORCEMENT COMPUTATION		PIT #		ITEM TYPE	
CLIENT	CUBIS SYSTEMS/AUSPITS				
PROJECT DESC	PIT CONCRETE MANHOLE PF12T				
DRAWING NAME	PIT CONCRETE MANHOLE PF12T				
DRAWING #	50201475	PAGE	1 / 1	SHEET SIZE	A3
SCALE	1:30				
REV.	<b>2</b>				