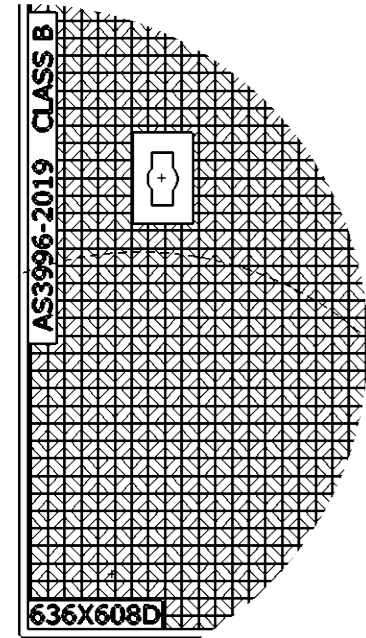
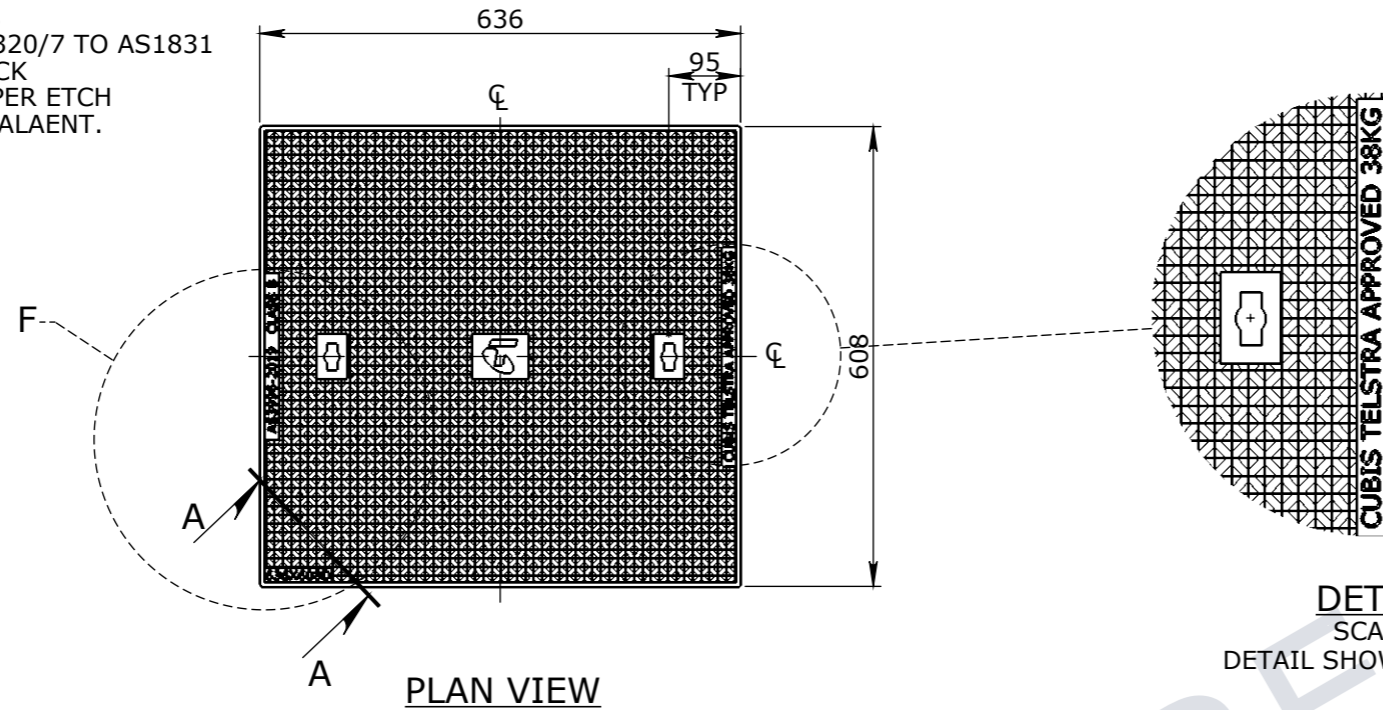


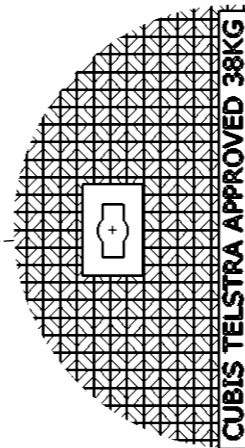
- NOTE:**
1. REMOVE ALL BURRS AND SHARP EDGES
 2. MATERIAL: SG CAST IRON GRADE 500/320/7 TO AS1831
 3. CAST SURFACES PAINTED COLOUR BLACK USING SOLVENT BASED ACID ETCH SUPER ETCH PRIMER. WTTYLE 239-MCRFCF OR EQUIVALENT. SEE WEBSITE: WWW.WATTYL.COM.AU



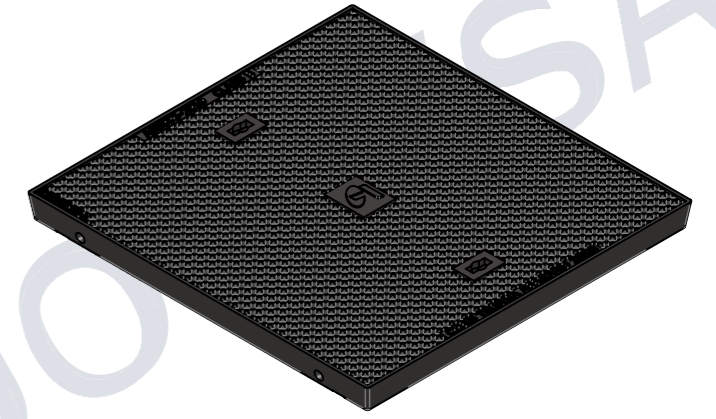
DETAIL F
SCALE 1:5
DETAIL SHOWN FOR CLARITY



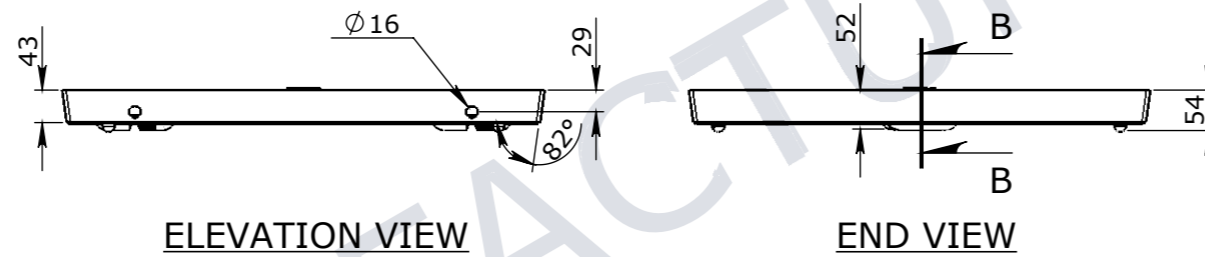
PLAN VIEW



DETAIL E
SCALE 1:5
DETAIL SHOWN FOR CLARITY

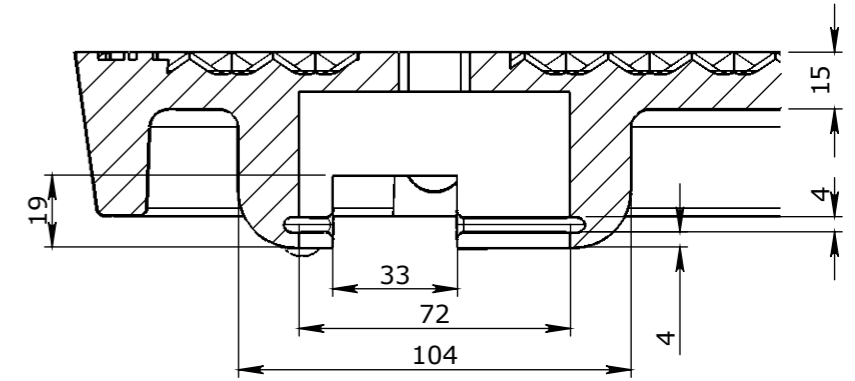


ISOMETRIC VIEW

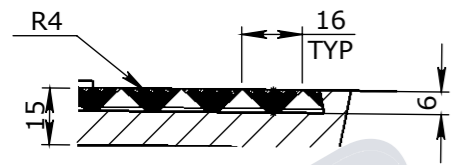


ELEVATION VIEW

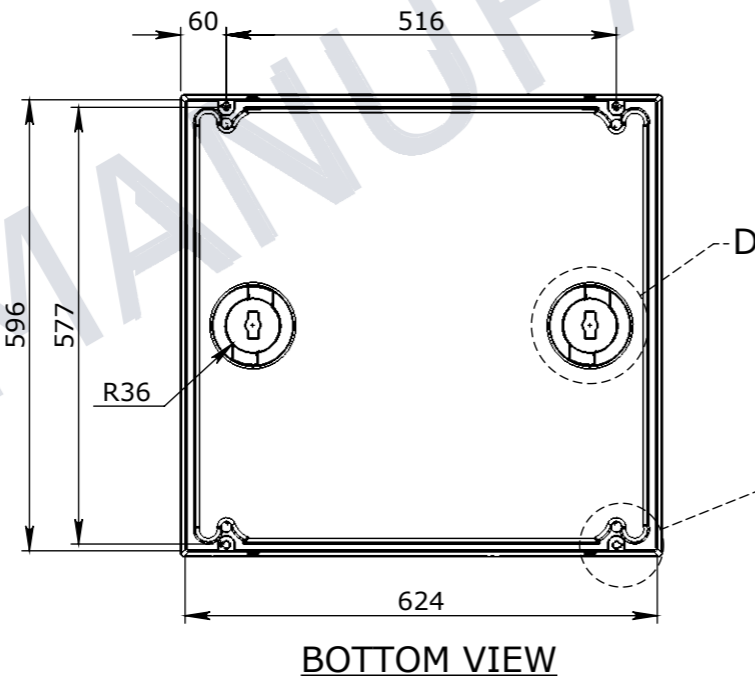
END VIEW



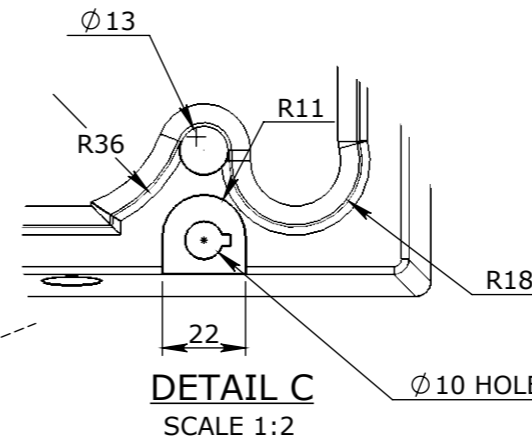
SECTION B-B
CROP SECTION FOR CLARITY
SCALE 1:2



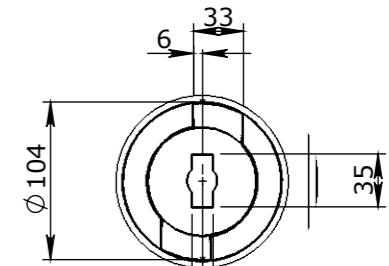
SECTION A-A
CROP SECTION FOR CLARITY
SCALE 1:2



BOTTOM VIEW



DETAIL C
SCALE 1:2



DETAIL D
SCALE 1:5

1. MATERIAL SPECIFICATIONS UNO
SECTIONS & FLATS - AS 3679 - GR 300+
PLATES AS 3678 - GR 250
SHS AS 1163 - GR 350
2. WELDING TO COMPLY TO AS 1554.1 UNO

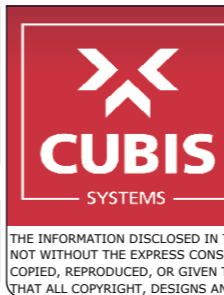
Rev	DESCRIPTION	DATE:	BY:	ECO#:

GENERAL TOLERANCES				
NOMINAL SIZE	UP TO 150	ABOVE 150 UP TO 500	ABOVE 500	ANGULAR ∠ X.X±0°30'
TOL	±1.0	±2.0	±5.0	∠ X ± 1°

TOLERANCES - FABRICATION		
LINEAR X.XX ± 0.02	FACES SQUARE ⊥ 0.05/100	ANGULAR ∠ X.X ± 0°30' DIA. CONC WITHIN Ⓞ 0.05 TIR
LINEAR X.X ± 0.1	FACES PARALLEL// 0.05/100	ANGULAR ∠ X ± 1° EDGES CHAMFERED 1.0 x 45°
LINEAR X. ± 0.25	FACES FLAT ▽ 0.05/100	GENERAL SURFACE FINISH Ra 3.2

REVISION CONTROL		

CHK / APPR:	
DATE:	
RPEQ DOCUMENT #:	
WEIGHT:	38.01Kg
MATERIAL:	CAST IRON
SURFACE TREATMENT:	



HEAD OFFICE:
CARNGHAM ROAD
BALLARAT, VIC 3351
(03) 5335 8741

ENGINEERING & DEVELOPMENT:
2 STRADBROKE STREET
HEATHWOOD, QLD 4110
(07) 3714 0444

PROJECT DESCRIPTION: CUBIS SYSTEMS AUSTRALIA CATALOGUE PRODUCTS				
DRAWING NAME: AX S™ MANHOLE COVER CAST IRON 636x608				
DRAWN TO AS 1100 DO NOT SCALE FROM SHEET	DRAWING No: 50201058	REV: 0		
SHEET: A3	PAGE: 1/1	SCALE UNO: 1:2	DRAFTED DATE: 4/06/2019	DRAFTED BY: P.GONCALVES

THE INFORMATION DISCLOSED IN THIS DOCUMENT IS CONFIDENTIAL AND IS NOT WITHOUT THE EXPRESS CONSENT OF CUBIS SYSTEMS AUSTRALIA TO BE COPIED, REPRODUCED, OR GIVEN TO ANY OTHER PARTY IN ANY FORM AND THAT ALL COPYRIGHT, DESIGNS AND PATENTS VEST IN CUBIS SYSTEMS AUS.