

**CONCRETE PRODUCT NOTE:**

- REFER TO GENERAL TOLERANCES UNO
- GRADE OF CONCRETE - 50MPA
- REINFORCEMENT:  
STEEL - REFER TO REINFORCEMENT COMPUTATIONS AP-EC-2020-PACK01-REV02  
FIBRE - FIBRECON MP47 (5KG/M3)
- ALL LIFTING POINTS TO BE USED WHEN LIFTING
- MINIMUM STRENGTH OF CONCRETE SHALL BE 25MPA AT THE TIME OF LIFTING
- DESIGN LIFE OF 100 YEARS
- EXPOSURE CLASSIFICATION AND CONCRETE COVER:  
STEEL REINFORCED  
MINIMUM EXPOSURE CLASSIFICATION - B1  
MINIMUM COVER TO REINFORCEMENT - 30mm  
FIBRE REINFORCED  
MINIMUM EXPOSURE CLASSIFICATION - B2  
MINIMUM COVER TO REINFORCEMENT - 40mm
- REFER TO ANCON LIFTING ARRANGEMENT PLAN

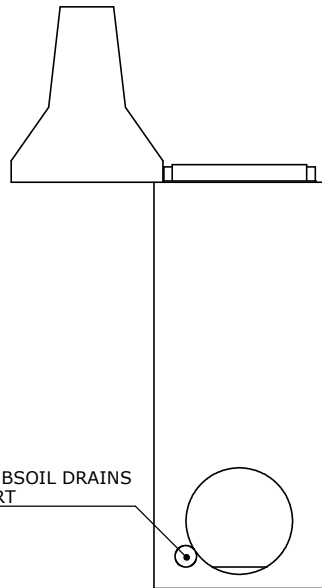
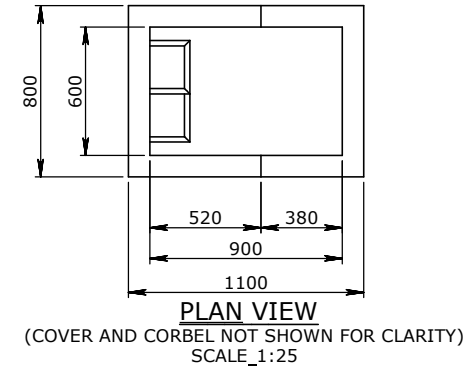
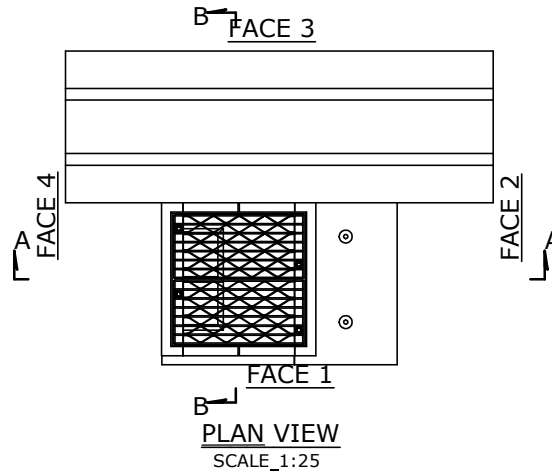
**DESIGN LOADS:**

CLASS D TRAFFIC DESIGN LOAD - AS3996:2019 & AS5100:2017.

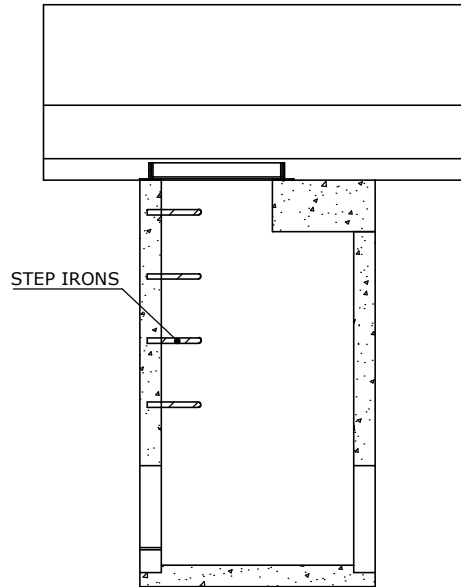
**STANDARD SPECIFICATION:**

PRODUCTS COMPLY WITH THE FOLLOWING RMS SPECIFICATIONS/DRAWINGS:

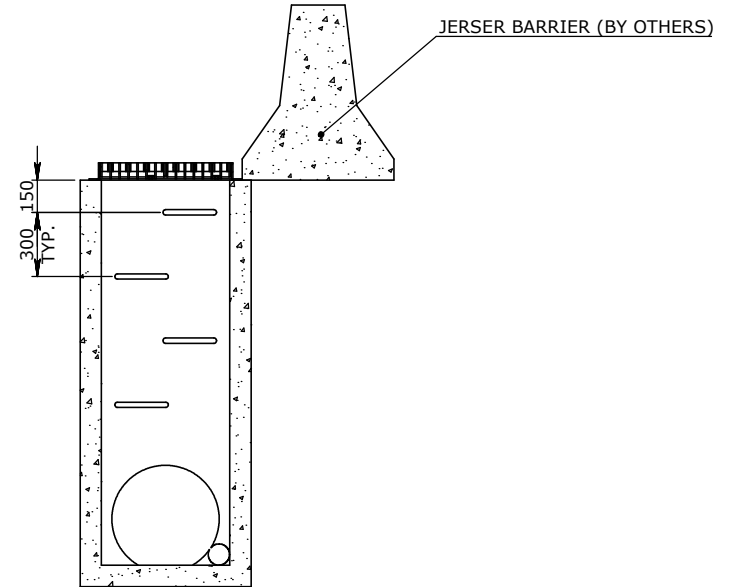
- R11 - STORMWATER DRAINAGE
- R53 - CONCRETE FOR GENERAL WORKS
- STANDARD DRAWING # R0220-25 AND R0220-26



**FACE 4**  
SCALE\_1:25



**SECTION A-A**  
SCALE\_1:25



**SECTION B-B**  
SCALE\_1:25

UNCONTROLLED DOCUMENT WHEN PRINTED

**TOLERANCE NOTES:**

- CONCRETE TOLERANCES TO BE INCONJUNCTION / ACCORDANCE WITH AS3600 - CONCRETE STRUCTURES
- WHEN A BROOME FINISH IS REQUIRED THE GENERAL TOLERANCE SUPERCEEDS THE FLATNESS TOLERANCE
- WALL THICKNESS - DIMENSION AS NOTED IS MINIMUM THICKNESS ONLY
- CONCRETE GRADE - 40MPA UNLESS NOTED OTHERWISE
- DIMENSIONS ARE NOT INCLUSIVE OF SEALANTS OF JOINTS
- SURFACE FINISH - CLASS 4 (AS3610.1)

Rev	DESCRIPTION	DATE	BY	APPROVED
3				
2				
1				

GENERAL TOLERANCES		REVISION CONTROL	
NOMINAL:	UP TO 1000mm	1M AND ABOVE	
TOLERANCE:	±5mm	1mm IN 200mm UP TO A MAXIMUM OF 20mm	FLATNESS: (NOT INCLUDING BROOME FINISH) ±4mm PER 1M WIDTH IN 1M LENGTH

CHK / APPR:	
DATE:	
RPEQ DOCUMENT #:	
WEIGHT:	3481Kg
MATERIAL:	CONCRETE
TRF REF:	

**Infrastructure Products Australia**  
A CRH COMPANY

HEAD OFFICE: 1 REEVES COURT, BREAKWATER, VIC 3219 1800 065 356  
ENGINEERING & DEVELOPMENT: 91 STRADBROKE STREET, HEATHWOOD, QLD 4110 (07) 3714 0444

DRAFTED DATE:	27/08/2021	PART/PRODUCT #	-	QUOTE #	-	ORDER #	-
DRAFTED BY:	ROROZCO	REINFORCEMENT COMPUTATION	-	PIT #	-	ITEM TYPE	IP
DATE LAST SAVED:	30/06/2022	CLIENT	ROADS AND MARITIME SERVICES				
LAST SAVED BY:	ROROZCO	PROJECT DESC	N/A				
DRAWING NAME		GULLY PIT TYPE F - DOUBLE GRATE					
DRAWING #	AP-RMS-FD	PAGE	1 / 2	SHEET SIZE	A3	SCALE	1:20
							REV. <b>0</b>

**CONCRETE PRODUCT NOTE:**

1. REFER TO GENERAL TOLERANCES UNO
2. GRADE OF CONCRETE - 50MPA
3. REINFORCEMENT:  
STEEL - REFER TO REINFORCEMENT COMPUTATIONS  
AP-EC-2020-PACK01-REV02  
FIBRE - FIBRECON MP47 (5KG/M3)
4. ALL LIFTING POINTS TO BE USED WHEN LIFTING
5. MINIMUM STRENGTH OF CONCRETE SHALL BE 25MPA AT THE TIME OF LIFTING
6. DESIGN LIFE OF 100 YEARS
7. EXPOSURE CLASSIFICATION AND CONCRETE COVER:  
STEEL REINFORCED  
MINIMUM EXPOSURE CLASSIFICATION - B1  
MINIMUM COVER TO REINFORCEMENT - 30mm  
FIBRE REINFORCED  
MINIMUM EXPOSURE CLASSIFICATION - B2  
MINIMUM COVER TO REINFORCEMENT - 40mm
8. REFER TO ANCON LIFTING ARRANGEMENT PLAN

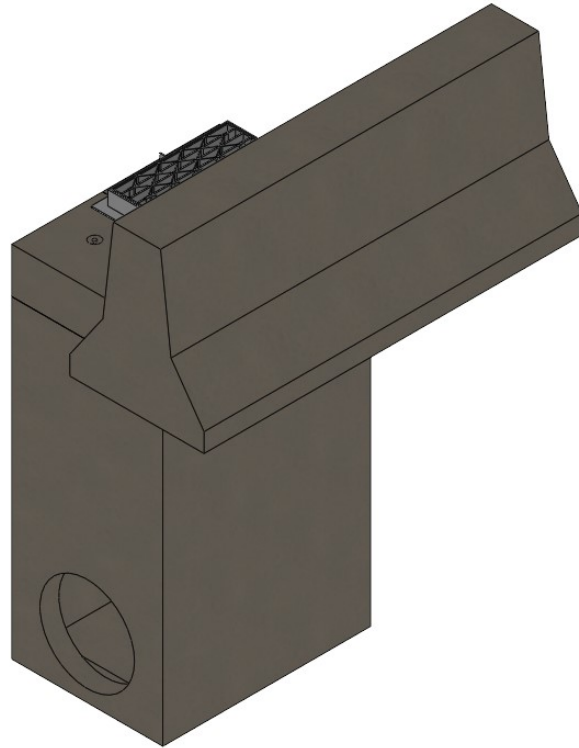
**DESIGN LOADS:**

CLASS D TRAFFIC DESIGN LOAD - AS3996:2019 & AS5100:2017.

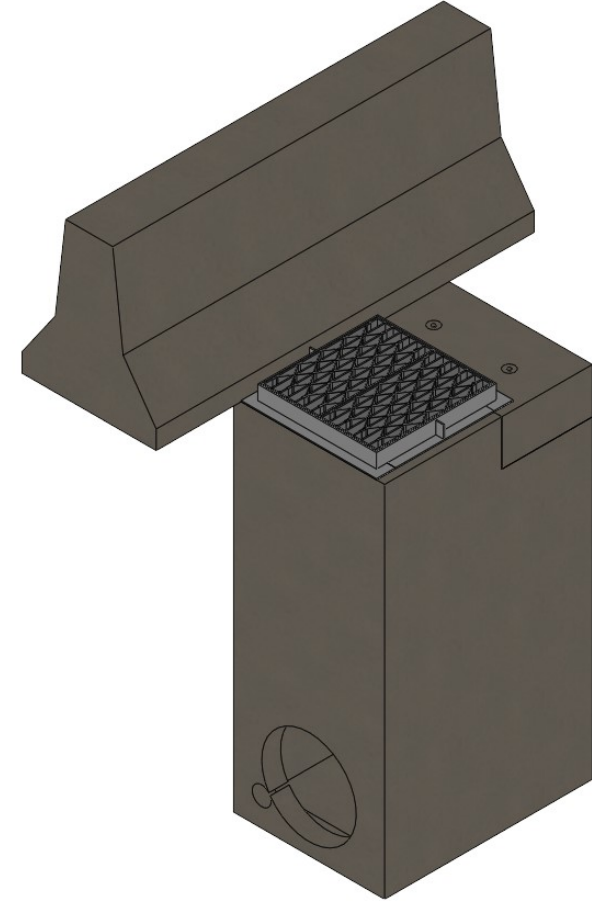
**STANDARD SPECIFICATION:**

PRODUCTS COMPLY WITH THE FOLLOWING RMS SPECIFICATIONS/DRAWINGS:

- R11 - STORMWATER DRAINAGE
- R53 - CONCRETE FOR GENERAL WORKS
- STANDARD DRAWING # R0220-25 AND R0220-26



FRONT-RIGHT ISOMETRIC VIEW



BACK-LEFT ISOMETRIC VIEW



VICTORIA:  
CARRINGHAM ROAD  
BALLARAT, VIC 3351  
QLD:  
91 STRADBROKE STREET  
HEATHWOOD, QLD 4110  
DRAWN TO AS 1100  
DO NOT SCALE  
FROM SHEET

NAME: <b>RMS GULLY PIT TYPE F - DOUBLE GRATE</b>	REV <b>0</b>
DRAWING No: <b>AP-RMS-FD</b>	
DRAFTED BY: ROROZCO	DRAFTED DATE: 27 AUG 2021
PAGE: 2 / 2	SHEET: A3
SCALE UNO: 1:20	