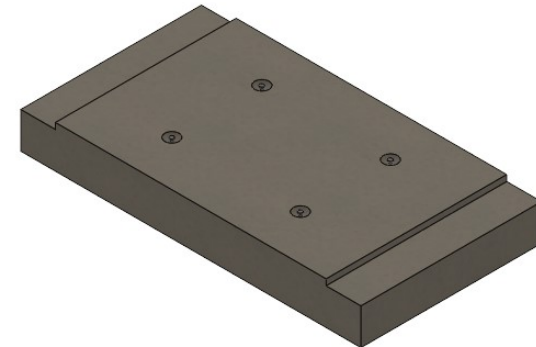
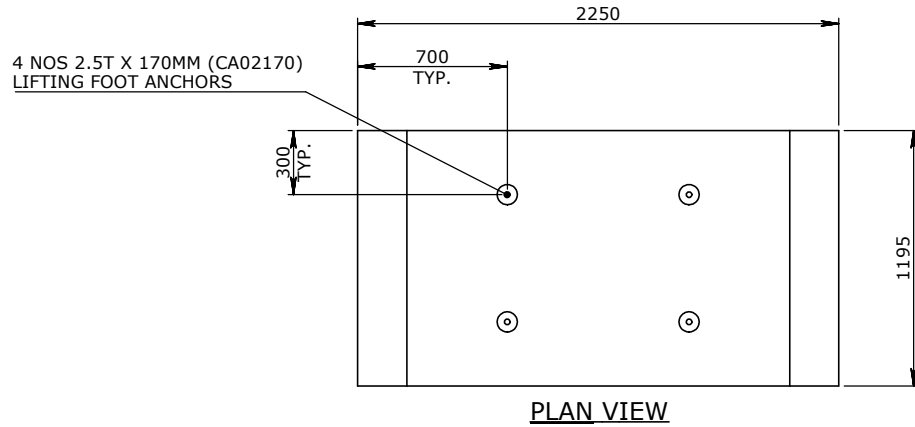
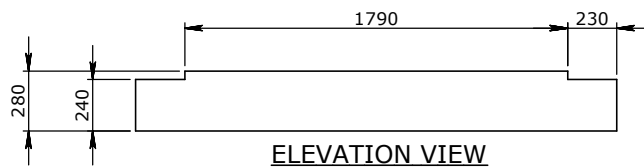


CULVERT BASE SLAB NOTES:

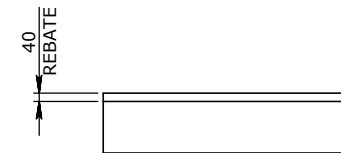
1. REFER TO GENERAL TOLERANCES UNO
2. ALL LIFTING POINTS TO BE USED WHEN LIFTING
3. MINIMUM STRENGTH OF CONCRETE SHALL BE 25MPA AT THE TIME OF LIFTING
4. NOMINAL COVER TO REINFORCEMENT - 35MM
5. REFER TO ANCON LIFTING ARRANGEMENT PLAN
6. BOX CULVERTS COMPLIES TO AS1597.2-2013



ISOMETRIC VIEW



ELEVATION VIEW



END VIEW

UNCONTROLLED DOCUMENT WHEN PRINTED

TOLERANCE NOTES:

1. CONCRETE TOLERANCES TO BE INCONJUNCTION / ACCORDANCE WITH AS3600 - CONCRETE STRUCTURES
2. WHEN A BROOME FINISH IS REQUIRED THE GENERAL TOLERANCE SUPERCEEDS THE FLATNESS TOLERANCE
3. WALL THICKNESS - DIMENSION AS NOTED IS MINIMUM THICKNESS ONLY
4. CONCRETE GRADE - 40MPA UNLESS NOTED OTHERWISE
5. DIMENSIONS ARE NOT INCLUSIVE OF SEALANTS OF JOINTS
6. SURFACE FINISH - CLASS 4 (AS3610.1)

| Rev. | DESCRIPTION | DATE | BY | APPROVED |
|------|-------------|------|----|----------|
| 3 | | | | |
| 2 | | | | |
| 1 | | | | |

| GENERAL TOLERANCES | | REVISION CONTROL | |
|--------------------|--------------|--------------------------------------|---|
| NOMINAL: | UP TO 1000mm | 1M AND ABOVE | FLATNESS: (NOT INCLUDING BROOME FINISH) |
| TOLERANCE: | ±5mm | 1mm IN 200mm UP TO A MAXIMUM OF 20mm | ±4mm PER 1M WIDTH IN 1M LENGTH |

| | |
|------------------|----------------|
| CHK / APPR: | |
| DATE: | |
| RPEQ DOCUMENT #: | |
| WEIGHT: | 1788.79Kg |
| MATERIAL: | CONCRETE 50MPA |
| TRF REF: | |

Infrastructure Products Australia
A CRH COMPANY

HEAD OFFICE: 1 REEVES COURT, BREAKWATER, VIC 3219, 1800 065 356
ENGINEERING & DEVELOPMENT: 91 STRADBROKE STREET, HEATHWOOD, QLD 4110, (07) 3714 0444

| | | | | | | | |
|------------------|------------|---|----------------|------------|----------|-----------|-----------|
| DRAFTED DATE: | 24/01/2022 | PART/PRODUCT # | TMR BASE SLABS | QUOTE # | | ORDER # | |
| DRAFTED BY: | DPRUSAC | REINFORCEMENT COMPUTATION | | PIT # | 50207218 | ITEM TYPE | RCBC BASE |
| DATE LAST SAVED: | 29/04/2022 | CLIENT | CUBIS SYSTEMS | | | | |
| LAST SAVED BY: | ROROZCO | PROJECT DESC | RCBC BASE | | | | |
| DRAWING NAME | | BASE SLAB TMR 1800-2A 1200mm NOMINAL LENGTH | | | | | |
| DRAWING # | 50207218 | PAGE | 1 / 1 | SHEET SIZE | A3 | SCALE | 1:25 |
| | | | | | | | B |