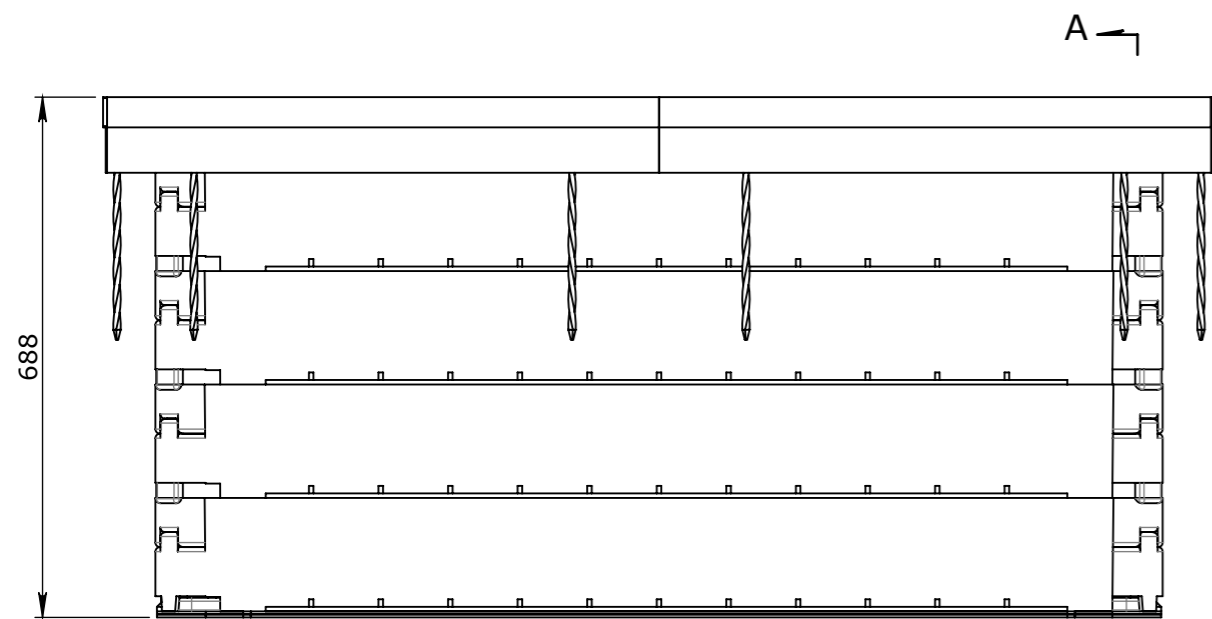
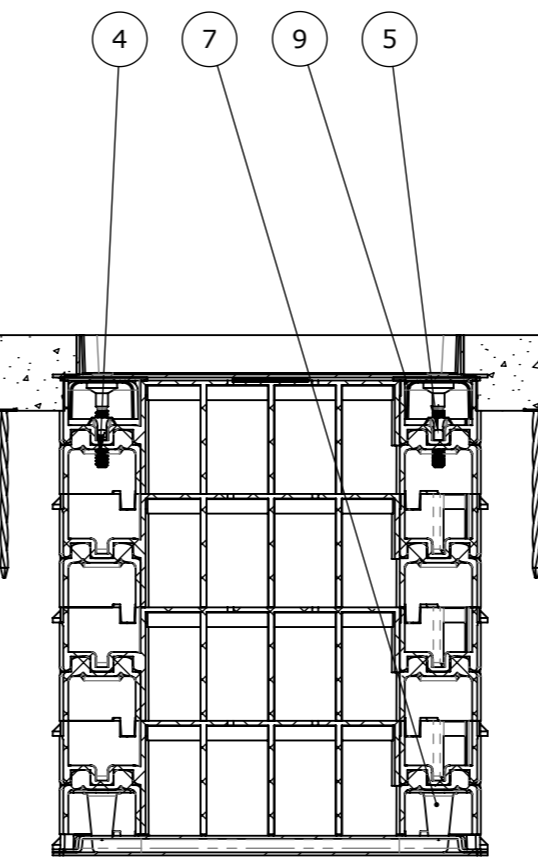


PLAN VIEW

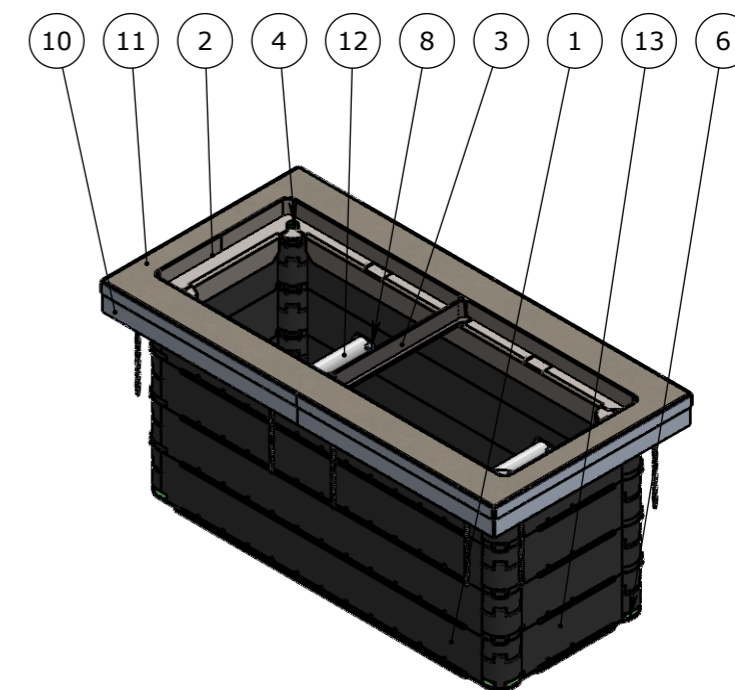


ELEVATION VIEW



END VIEW

SECTION A-A



ISOMETRIC VIEW

SCALE 1:20

BOM:50204349

ITEM #	QTY.	PART #	DESCRIPTION	WEIGHT
1	8	50201760	STAKKABOX™ FORTRESS 1220XD150	3.80
2	1	50201780	DEFAULT[AS MACHINED]	22.04
3	1	50201264	CROSSBAR TO SUIT P6/P8/P9 PIT	2.55
4	4	50201781	HS6/8/9 ADJUSTMENT BOLT	0.03
5	4	50201782	HS6/8/9 ADJUSTMENT NUT	0.03
6	1	50201779	FLOOR HDPE FORTRESS	6.93
7	4	50201785	ADJUSTING SEAL SEAL - FORTRESS ASSEMBLY	0.04
8	4	50201784	MOUNTING FLANGE - FORTRESS ASSEMBLY	0.01
9	4	50201783	WALL CONNECTION MOUNT- FORTRESS ASSEMBLY	0.03
10	1	50201793	ALLUMINIUM EDGING KIT HS6	3.66
11	1		INSITU CAST PLINTH	
12	2	50201024	PIPE PVC DIA 32mm CLASS 9 (6M)	0.1
13	8	50201762	STAKKABOX™ FORTRESS 445XD150	1.24

UNCONTROLLED DOCUMENT WHEN PRINTED

- TOLERANCE NOTES:**
1. CONCRETE TOLERANCES TO BE IN CONJUNCTION / ACCORDANCE WITH AS3600 - CONCRETE STRUCTURES
 2. WHEN A BROOM FINISH IS REQUIRED THE GENERAL TOLERANCE SUPERCEDES THE FLATNESS TOLERANCE
 3. WALL THICKNESS - DIMENSION AS NOTED IS MINIMUM THICKNESS ONLY
 4. CONCRETE GRADE - 40MPA UNLESS NOTED OTHERWISE
 5. DIMENSIONS ARE NOT INCLUSIVE OF SEALANTS OF JOINTS
 6. SURFACE FINISH - CLASS 4 (AS3610.1)

Rev.	DESCRIPTION	DATE	BY	APPROVED
3				
2				
1				

GENERAL TOLERANCES		REVISION CONTROL	
NOMINAL:	UP TO 1000mm	1M AND ABOVE	FLATNESS: (NOT INCLUDING BROOME FINISH)
TOLERANCE:	±5mm	1mm IN 200mm UP TO A MAXIMUM OF 20mm	±4mm PER 1M WIDTH IN 1M LENGTH

CHK / APPR:	PA
DATE:	
RPEQ DOCUMENT #:	
WEIGHT:	172.30Kg
MATERIAL:	
IRF REF:	

Infrastructure Products Australia
A CRH COMPANY

HEAD OFFICE:
1 REEVES COURT
BREAKWATER, VIC 3219
1800 065 356

ENGINEERING & DEVELOPMENT:
91 STRADBROKE STREET
HEATHWOOD, QLD 4110
(07) 3714 0444

DRAFTED DATE:	21/06/2022
DRAFTED BY:	P.ADAMS
DATE LAST SAVED:	21/06/2022
LAST SAVED BY:	NBRADIC

ISSUED FOR CLIENT REVIEW ONLY			
ISSUE	DATE	CLIENT APPROVAL	
	22/06/2022		
PART/PRODUCT #	50201250	QUOTE #	ORDER #
REINFORCEMENT COMPUTATION		PIT #	ITEM TYPE
CLIENT	CUBIS SYSTEMS/AUSPITS		
PROJECT DESC			
DRAWING NAME	HS6 ASSEMBLY	DRAWING #	50204349
PAGE	1 / 1	SHEET SIZE	A3
SCALE	1:10	REV.	1