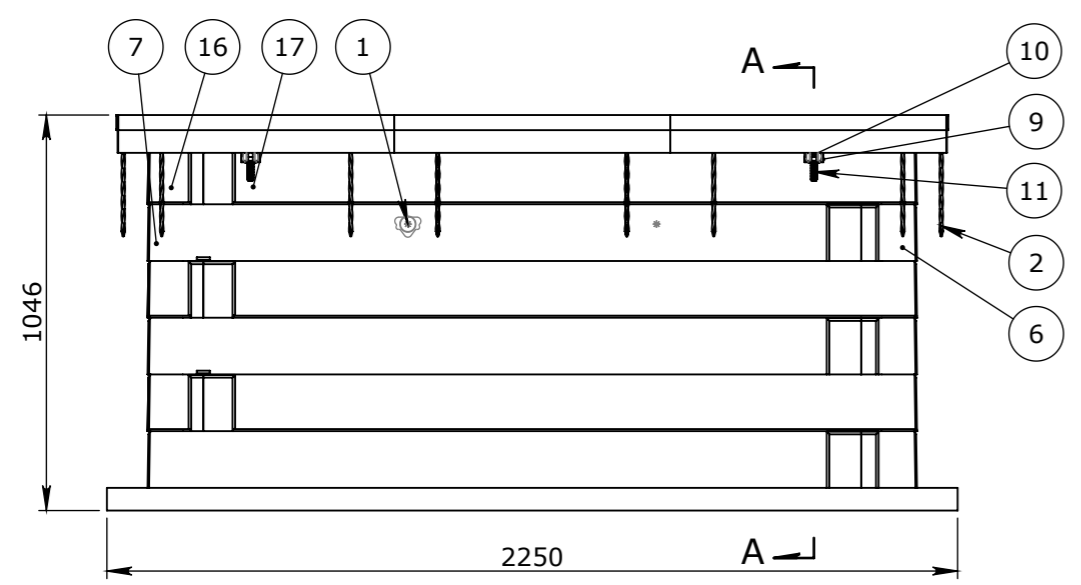
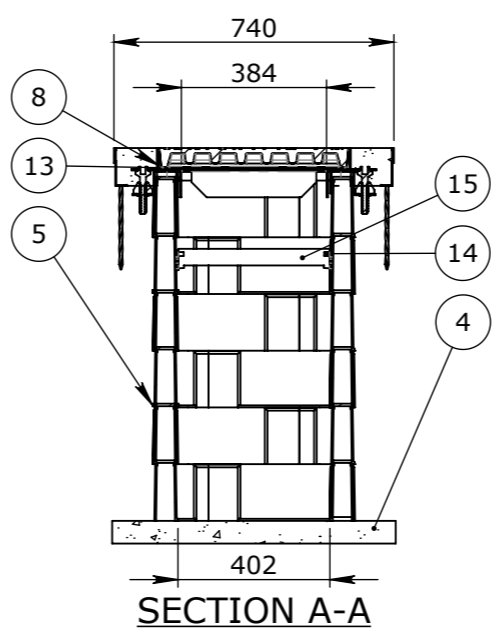


PLAN VIEW

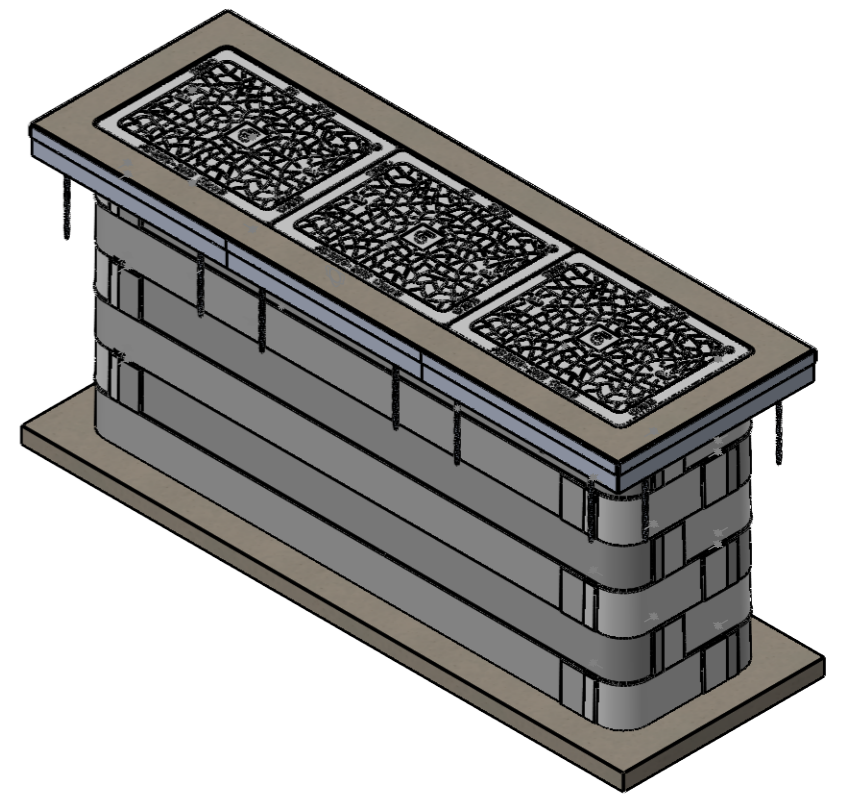
BOM:50202762-02				
ITEM #	QTY.	PART #	DESCRIPTION	WEIGHT
1	3	50201074	AX S™ P6 COVER COMPOSITE SMART TELSTRA CLASS B	16.8
2	1	50201793	ALUMINIUM EDGING KIT	5.10
3	1		INSITU CAST PLINTH	
4	1		INSITU CAST FLOOR	
5	24	50201133	STAKKABOX ULTIMA PEG	217.13
6	6	50201117	STAKKABOX CONNECT HS RIGHT 400mm	3.1
7	6	50201132	STAKKABOX CONNECT HS RIGHT 1900mm	9.94
8	1	50201874	FRAME TO SUIT P9 PIT	33
9	4	50203308	HS9 ADJUSTMENT BRACKET	0.41
10	4	50201782	NUT FORTRESS ASSEMBLY	0.03
11	4	50201781	BOLT FORTRESS ASSEMBLY	0.03
12	2	50201264	CROSSBAR TO SUIT P6 PIT	2.67
13	3	50201207	GASKET P6	0.94
14	4	50201784	MOUNTING FLANGE - FORTRESS ASSEMBLY	0.01
15	2	50203843	PIPE PVC DIA 32mm CLASS 9 400mm	0.2
16	6	50201116	STAKKABOX CONNECT HS LEFT 400mm	3.1
17	6	50201131	STAKKABOX CONNECT HS LEFT 1900mm	4.28



ELEVATION VIEW



SECTION A-A



ISOMETRIC VIEW

UNCONTROLLED DOCUMENT WHEN PRINTED

- TOLERANCE NOTES:**
1. CONCRETE TOLERANCES TO BE IN CONJUNCTION / ACCORDANCE WITH AS3600 - CONCRETE STRUCTURES
 2. WHEN A BROOM FINISH IS REQUIRED THE GENERAL TOLERANCE SUPERCEDES THE FLATNESS TOLERANCE
 3. WALL THICKNESS - DIMENSION AS NOTED IS MINIMUM THICKNESS ONLY
 4. CONCRETE GRADE - 40MPA UNLESS NOTED OTHERWISE
 5. DIMENSIONS ARE NOT INCLUSIVE OF SEALANTS OF JOINTS
 6. SURFACE FINISH - CLASS 4 (AS3610.1)

Rev.	DESCRIPTION	DATE	BY	APPROVED
3				
2				
1				

GENERAL TOLERANCES		REVISION CONTROL	
NOMINAL:	UP TO 1000mm	1M AND ABOVE	FLATNESS: (NOT INCLUDING BROOME FINISH)
TOLERANCE:	±5mm	1mm IN 200mm UP TO A MAXIMUM OF 20mm	±4mm PER 1M WIDTH IN 1M LENGTH

CHK / APPR: CA	WEIGHT: 583.74Kg
DATE:	MATERIAL:
RPEQ DOCUMENT #:	IRF REF:

Infrastructure Products Australia
A CRH COMPANY

HEAD OFFICE: 1 REEVES COURT, BREAKWATER, VIC 3219, 1800 065 356

ENGINEERING & DEVELOPMENT: 91 STRADBROKE STREET, HEATHWOOD, QLD 4110, (07) 3714 0444

DRAFTED DATE: 16/06/2022	DRAWN TO AS 1100 DO NOT SCALE FROM SHEET
DRAFTED BY: P.ADAMS	
DATE LAST SAVED: 16/06/2022	
LAST SAVED BY: NBRADIC	

ISSUED FOR CLIENT REVIEW ONLY			
ISSUE	DATE	CLIENT APPROVAL	
A	16/06/2022		

PART/PRODUCT # 50202762	QUOTE #	ORDER #	
REINFORCEMENT COMPUTATION	PIT #	ITEM TYPE	
CLIENT CUBIS SYSTEMS/AUSPITS			
PROJECT DESC HS9 KIT			
DRAWING NAME HS9 CONCEPT PIT			
DRAWING # 50202762-02	PAGE 1 / 1	SHEET SIZE A3	SCALE 1:20
			REV. A