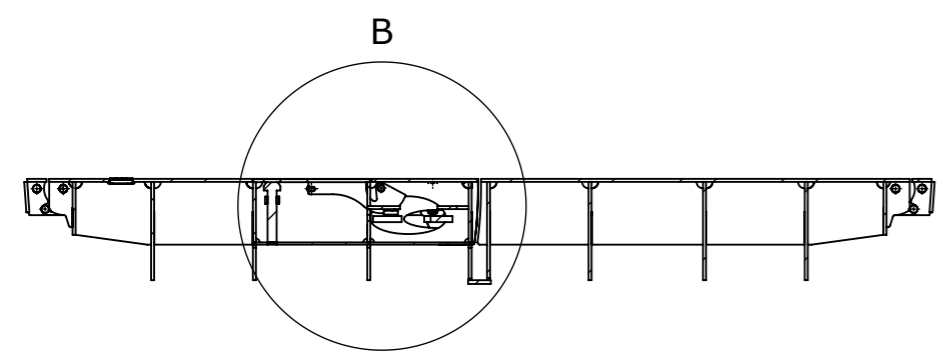
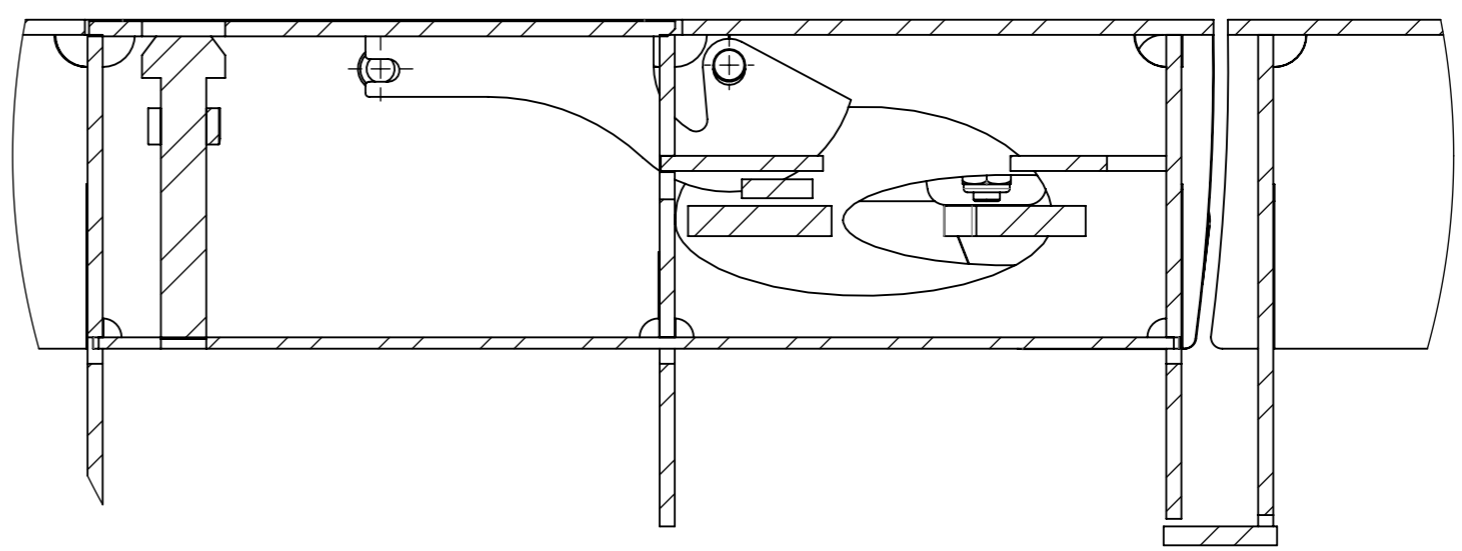


DETAIL A
SCALE_1:2



SECTION A-A



DETAIL B
SCALE_1:2

UNCONTROLLED DOCUMENT WHEN PRINTED

- TOLERANCE NOTES:**
1. CONCRETE TOLERANCES TO BE IN CONJUNCTION / ACCORDANCE WITH AS3600 - CONCRETE STRUCTURES
 2. WHEN A BROOME FINISH IS REQUIRED THE GENERAL TOLERANCE SUPERCEEDS THE FLATNESS TOLERANCE
 3. WALL THICKNESS - DIMENSION AS NOTED IS MINIMUM THICKNESS ONLY
 4. CONCRETE GRADE - 40MPA UNLESS NOTED OTHERWISE
 5. DIMENSIONS ARE NOT INCLUSIVE OF SEALANTS OF JOINTS
 6. SURFACE FINISH - CLASS 4 (AS3610.1)

Rev	DESCRIPTION	DATE	BY	APPROVED
3				
2				
1				

GENERAL TOLERANCES		REVISION CONTROL	
NOMINAL:	UP TO 1000mm	1M AND ABOVE	FLATNESS: (NOT INCLUDING BROOME FINISH)
TOLERANCE:	±5mm	1mm IN 200mm UP TO A MAXIMUM OF 20mm	±4mm PER 1M WIDTH IN 1M LENGTH

CHK / APPR: ANDREW CHAO	WEIGHT: 95.0Kg
DATE:	MATERIAL:
RPEQ DOCUMENT #:	IRF REF:

WWW.CUBIS-SYSTEMS.COM.AU
 HEAD OFFICE:
 1 REEVES COURT
 BREAKWATER, VIC. 3219
 T: 1800 065 356
 QLD
 91 SIRADBROKE STREET
 HEATHWOOD, QLD 4110
 NSW
 182 ANDREWS ROAD
 PENRITH, NSW 2750

THE INFORMATION DISCLOSED IN THIS DOCUMENT IS CONFIDENTIAL AND IS NOT WITHOUT THE EXPRESS CONSENT OF CUBIS SYSTEMS

AUSTRALIA TO BE COPIED, REPRODUCED, OR GIVEN TO ANY OTHER PARTY IN ANY FORM AND THAT ALL COPYRIGHT, DESIGNS AND PATENTS VEST IN CUBIS SYSTEMS AUS.

DRAFTED DATE: 8/12/2021	DATE LAST SAVED: 14/12/2021
DRAFTED BY:	LAST SAVED BY: NBRADIC
DRAWN TO AS 1100 DO NOT SCALE FROM SHEET	

PART/PRODUCT # 50201994	QUOTE #	ORDER #
REINFORCEMENT COMPUTATION	PIT #	ITEM TYPE
CLIENT CUBIS SYSTEMS/AUSPITS		
PROJECT DESC AX S™ SCEC SL1 TO SUIT 1100x900 OPENING COVER		
COVER GMS BARRI BOLT AX S™ SCEC SL1 TO SUIT 1100x900 OPENING COVER GMS BARRI BOLT		
PAGE 1 / 1	SHEET SIZE A3	SCALE 1:10
0A		