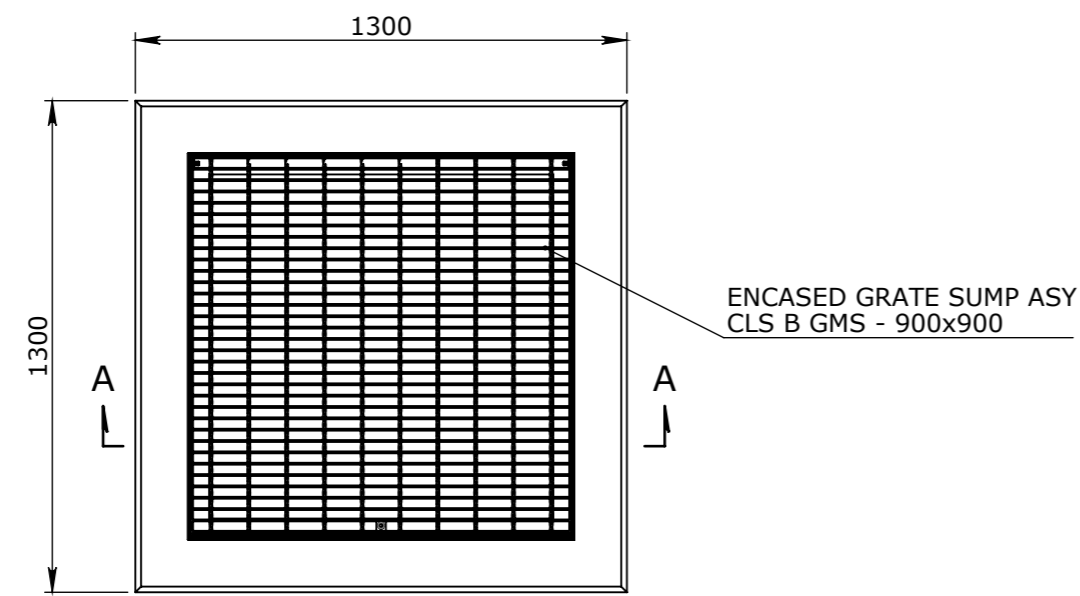
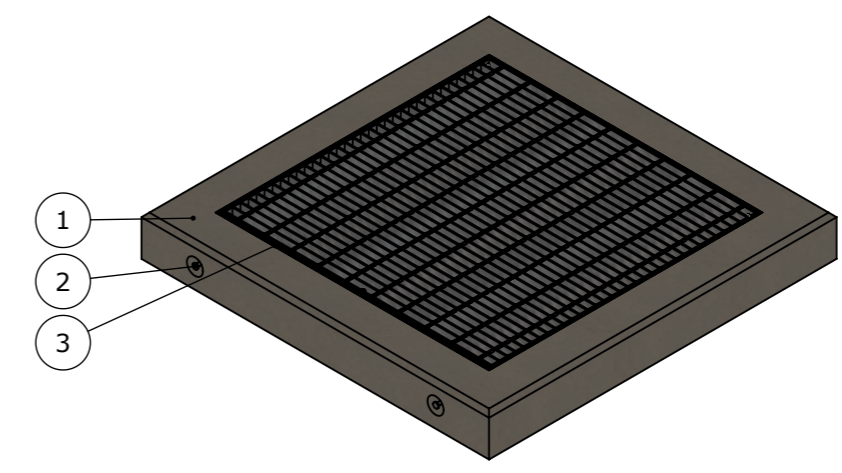


50201703 ENCASEMENT INFILL 1310x1310x200 WITH 99B CLASS B

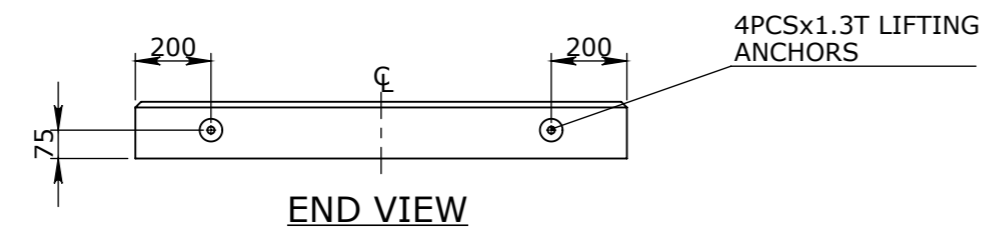
ITEM #	QTY.	DESCRIPTION	MATERIAL
1	1	1300x1300x150 CLS B ENCASEMENT	CONCRETE 50MPa
2	4	FOOT ANCHOR 1.3Tx85mm	MS GR-250 GALV
3	1	GRATE SUMP ASY CLS B GMS - 900X900	MS GR-250 GALV



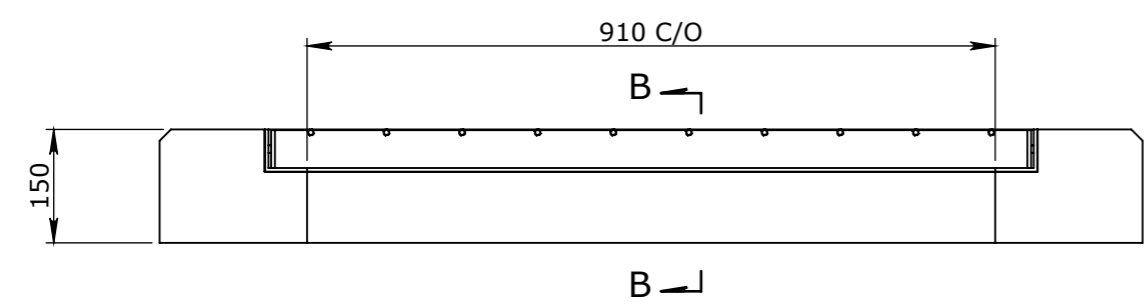
PLAN VIEW



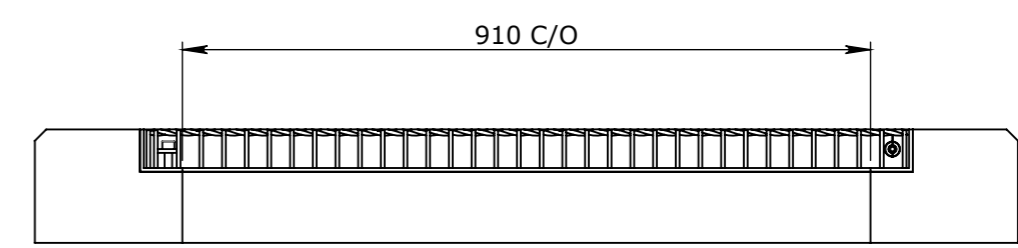
ISOMETRIC VIEW



END VIEW



SECTION A-A
SCALE 1:10



SECTION B-B
SCALE 1:10

ISSUED FOR CONSTRUCTION

TOLERANCE NOTES:
 1. CONCRETE TOLERANCES TO BE IN CONJUNCTION / ACCORDANCE WITH AS3600 - CONCRETE STRUCTURES
 2. WHEN A BROOME FINISH IS REQUIRED THE GENERAL TOLERANCE SUPERCEEDS THE FLATNESS TOLERANCE
 3. WALL THICKNESS - DIMENSION AS NOTED IS MINIMUM THICKNESS ONLY
 4. CONCRETE GRADE - 40MPa UNLESS NOTED OTHERWISE
 5. DIMENSIONS ARE NOT INCLUSIVE OF SEALANTS OF JOINTS
 6. SURFACE FINISH - CLASS 4 (AS3610.1)

Rev	DESCRIPTION	DATE	BY	APPROVED
3				
2				
1				

GENERAL TOLERANCES		REVISION CONTROL	
NOMINAL:	UP TO 1000mm	1M AND ABOVE	FLATNESS: (NOT INCLUDING BROOME FINISH)
TOLERANCE:	±5mm	1mm IN 200mm UP TO A MAXIMUM OF 20mm	±4mm PER 1M WIDTH IN 1M LENGTH

CHK / APPR:	C
DATE:	
RPEQ DOCUMENT #:	
WEIGHT:	390Kg
MATERIAL:	
IRF REF:	

HEAD OFFICE:
 1/1 REEVES COURT, BREAKWATER, VIC 3219
 P: (03) 5222 4526; F: (03) 5222 1914

THE INFORMATION DISCLOSED IN THIS DOCUMENT IS CONFIDENTIAL AND IS NOT WITHOUT THE EXPRESS CONSENT OF AUSPITS AUSTRALIA TO BE COPIED, REPRODUCED, OR GIVEN TO ANY OTHER PARTY IN ANY FORM AND THAT ALL COPYRIGHT, DESIGNS AND PATENTS VEST IN AUSPITS AUSTRALIA

DRAFTED DATE:	15/07/2020
DRAFTED BY:	MLEE
DATE LAST SAVED:	9/09/2020
LAST SAVED BY:	MLEE

PART/PRODUCT #	REINFORCEMENT COMPUTATION	QUOTE #	PIT #	ORDER #	ITEM TYPE
CLIENT	PROJECT DESC	ENCASEMENT INFILL 1310x1310x200 WITH 99B CLASS B			
DRAWING #	PAGE	SHEET SIZE	SCALE	REV.	
50201703	1 / 1	A3	1:20	OB	