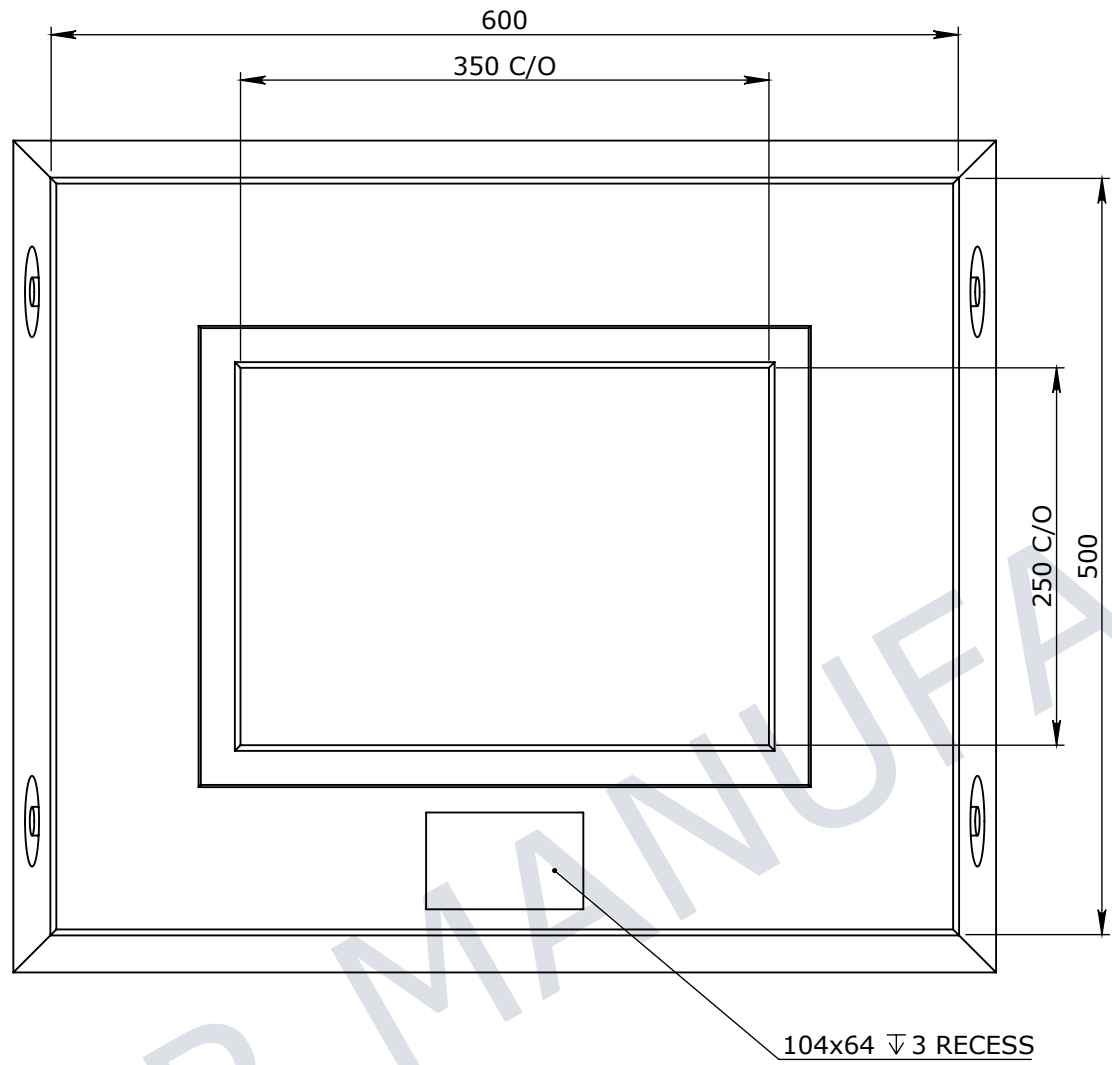
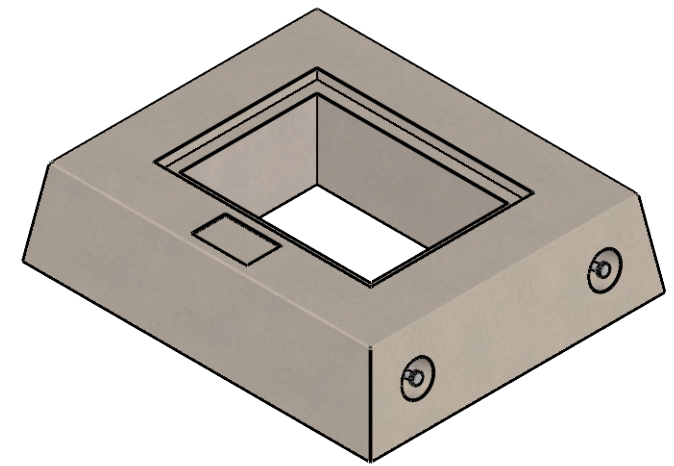


**CONCRETE NOTE:**

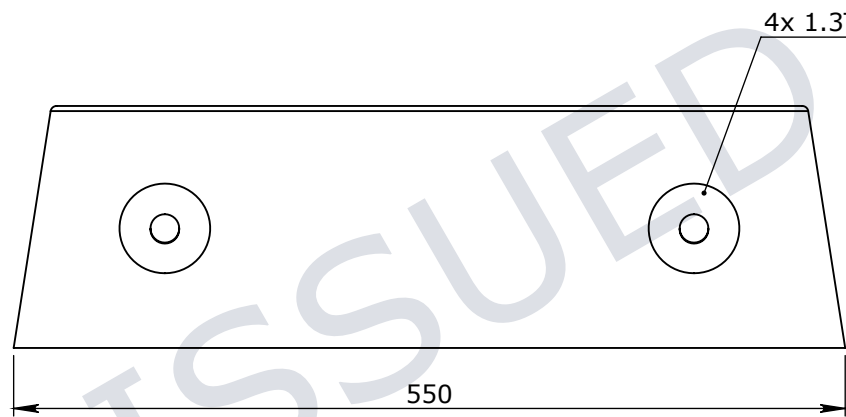
1. REFER TO GENERAL TOLERANCES UNO
2. GRADE OF CONCRETE - 40MPA
3. ALL LIFTING POINTS TO BE USED WHEN LIFTING
4. MINIMUM STRENGTH OF CONCRETE SHALL BE 25MPA AT THE TIME OF LIFTING
5. REFER TO BVCI-INS-C-001 (STD INSTALLATION GUIDE) FOR INSTALLATION DETAILS
6. REFER TO ANCON LIFTING ARRANGEMENT PLAN



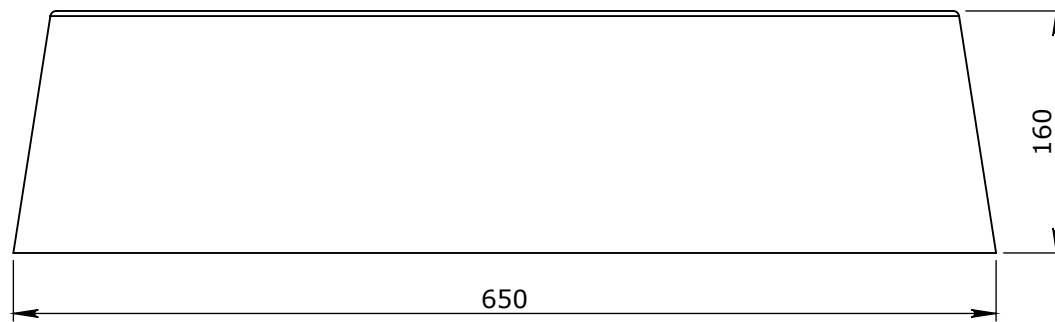
**PLAN VIEW**



**ISOMETRIC VIEW**  
SCALE 1:10



**END VIEW**



**ELEVATION VIEW**

UNCONTROLLED DOCUMENT WHEN PRINTED

**TOLERANCE NOTES:**

1. CONCRETE TOLERANCES TO BE IN CONJUNCTION / ACCORDANCE WITH AS3600 - CONCRETE STRUCTURES
2. WHEN A BROOME FINISH IS REQUIRED THE GENERAL TOLERANCE SUPERCEEDS THE FLATNESS TOLERANCE
3. WALL THICKNESS - DIMENSION AS NOTED IS MINIMUM THICKNESS ONLY
4. CONCRETE GRADE - 40MPA UNLESS NOTED OTHERWISE
5. DIMENSIONS ARE NOT INCLUSIVE OF SEALANTS OF JOINTS
6. SURFACE FINISH - CLASS 4 (AS3610.1)

| Rev | DESCRIPTION | DATE | BY | APPROVED |
|-----|-------------|------|----|----------|
| 3   |             |      |    |          |
| 2   |             |      |    |          |
| 1   |             |      |    |          |

| GENERAL TOLERANCES |              | REVISION CONTROL                     |   |
|--------------------|--------------|--------------------------------------|---|
| NOMINAL:           | UP TO 1000mm | 1M AND ABOVE                         | FLATNESS: (NOT INCLUDING BROOME FINISH) |
| TOLERANCE:         | ±5mm         | 1mm IN 200mm UP TO A MAXIMUM OF 20mm | ±4mm PER 1M WIDTH IN 1M LENGTH          |

|                  |            |
|------------------|------------|
| CHK / APPR:      | Paul Adams |
| DATE:            |            |
| RPEQ DOCUMENT #: |            |
| WEIGHT:          | 95Kg       |
| MATERIAL:        |            |
| IRF REF:         |            |

**HEAD OFFICE:**  
CARNHAM ROAD  
BALLARAT, VIC 3351  
(03) 5335 8741

**ENGINEERING & DEVELOPMENT:**  
2 STRADBROKE STREET  
HEATHWOOD, QLD 4110  
(07) 3714 0444

THE INFORMATION DISCLOSED IN THIS DOCUMENT IS CONFIDENTIAL AND IS NOT WITHOUT THE EXPRESS CONSENT OF CUBIS SYSTEMS AUSTRALIA TO BE COPIED, REPRODUCED, OR GIVEN TO ANY OTHER PARTY IN ANY FORM AND THAT ALL COPYRIGHT, DESIGNS AND PATENTS VEST IN CUBIS SYSTEMS AUS.

|   |           |
|---|-----------|
| DRAFTED DATE:                               | 5/06/2017 |
| DRAFTED BY:                                 |           |
| DATE LAST SAVED:                            | 2/04/2020 |
| LAST SAVED BY:                              | P.ADAMS   |
| DRAWN TO AS 1100<br>DO NOT SCALE FROM SHEET |           |

|                           |                             |         |       |            |    |
|---------------------------|-----------------------------|---------|-------|------------|----|
| PART/PRODUCT #            | 50201502                    | QUOTE # |       | ORDER #    |    |
| REINFORCEMENT COMPUTATION |                             | PIT #   |       | ITEM TYPE  |    |
| CLIENT                    | CUBIS SYSTEMS/AUSPITS       |         |       |            |    |
| PROJECT DESC              | COLLAR CONCRETE SIT 400x300 |         |       |            |    |
| DRAWING NAME              | CLASS B 300x400 SIT COLLAR  |         |       |            |    |
| DRAWING #                 | 50201502                    | PAGE    | 1 / 1 | SHEET SIZE | A3 |
| SCALE                     | 1:5                         | REV.    | 0     |            |    |