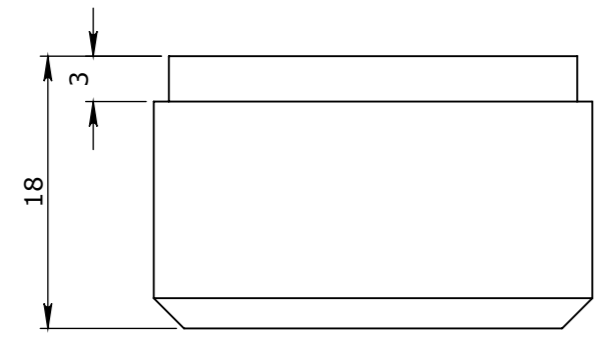


PLAN VIEW



ISOMETRIC VIEW

SHROUD TO SUIT M12 BARRI BOLT
 MATERIAL - MILD STEEL
 SURFACE FINISH - ZINC PLATED

UNCONTROLLED DOCUMENT WHEN PRINTED

1. MATERIAL SPECIFICATIONS UNO SECTIONS & FLATS - AS 3679 - GR 300+ PLATES AS 3678 - GR 250 SHS AS 1163 - GR 350 2. WELDING TO COMPLY TO AS 1554.1 UNO				CHK / APPR: PATERNO, RAFAEL			HEAD OFFICE: CARNGHAM ROAD BALLARAT, VIC 3351 (03) 5335 8741 ENGINEERING & DEVELOPMENT: 91 STRADBROKE STREET HEATHWOOD, QLD 4110 (07) 3714 0444 THE INFORMATION DISCLOSED IN THIS DOCUMENT IS CONFIDENTIAL AND IS NOT WITHOUT THE EXPRESS CONSENT OF CUBIS SYSTEMS AUSTRALIA TO BE COPIED, REPRODUCED, OR GIVEN TO ANY OTHER PARTY IN ANY FORM AND THAT ALL COPYRIGHT, DESIGNS AND PATENTS VEST IN CUBIS SYSTEMS AUS.			PART/PRODUCT # 50201347		QUOTE #		ORDER #	
GENERAL TOLERANCES				REVISION CONTROL			WEIGHT: 0.03Kg			CLIENT CUBIS SYSTEMS/AUSPITS		DRAWING NAME SHROUD ZP 12MM			
NOMINAL SIZE	UP TO 150	ABOVE 150 UP TO 500	ABOVE 500	ANGULAR ∠ X.X±0°30'	LINEAR X.XX ± 0.02	FACES SQUARE ⊥ 0.05/100	ANGULAR ∠ X.X ± 0°30' DIA. CONC WITHIN Ⓞ 0.05 TIR	MATERIAL: MS GR-250 GALV			PROJECT DESC SHROUD ZP 12MM				
TOL	±1.0	±2.0	±5.0	∠ X ± 1°	LINEAR X.X ± 0.1	FACES PARALLEL // 0.05/100	ANGULAR ∠ X ± 1° EDGES CHAMFERED 1.0 x 45°	SURFACE TREATMENT: Ra 3.2			DRAWING # 50201347				
										PAGE 1 / 1		SHEET SIZE A3			
										SCALE 2:1		REV. 1			