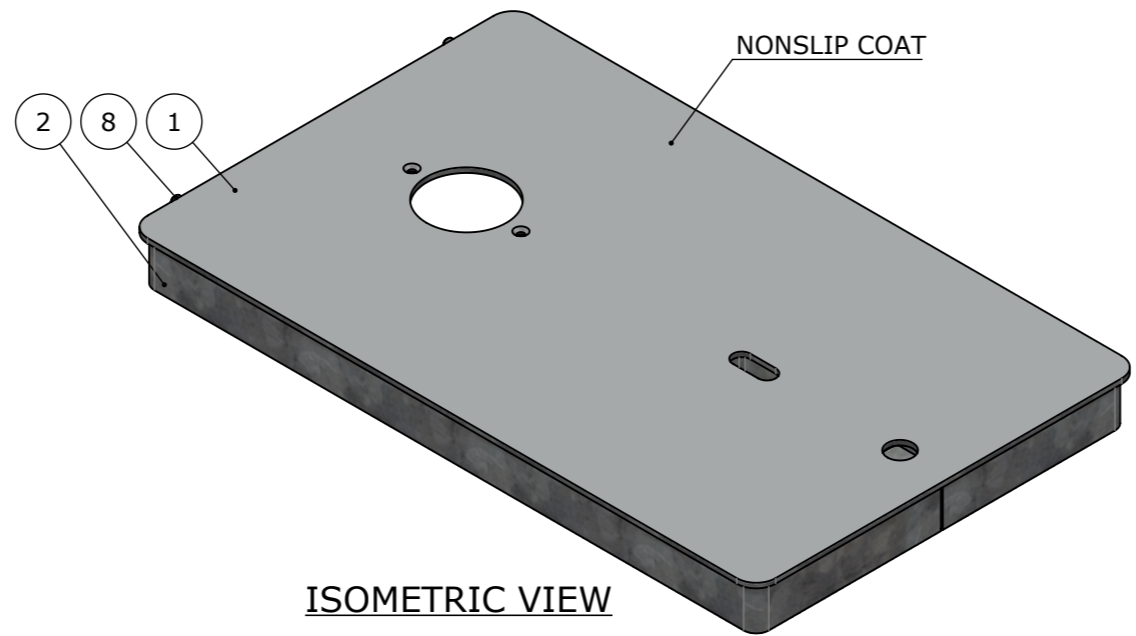


**FABRICATION NOTE:**

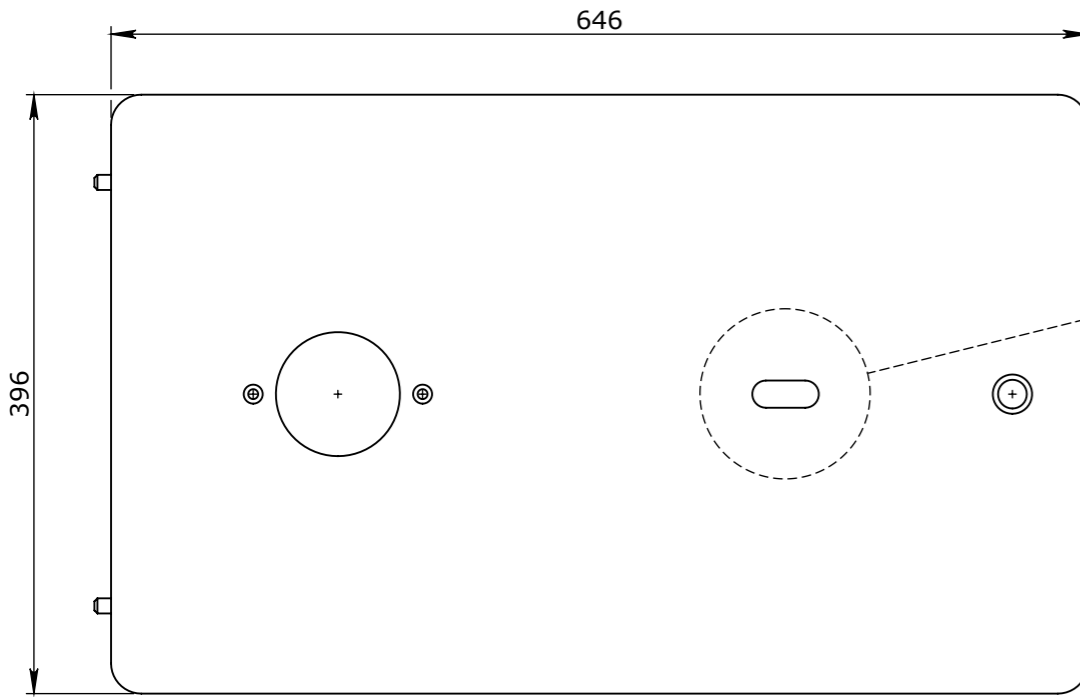
1. REFER TO TOLERANCES - FABRICATION UNO
2. WELDS TO COMPLY WITH AS 1554-1
3. 5mm CONTINUOUS FILLET WELDS UNO
4. ALL SHEET & PLATE PROFILES TO BE MACHINE CUT FROM .DXF FILES, SOME DIMENSIONS OMITTED
5. REMOVE ALL BURRS & SHARP EDGES
6. \* DENOTES FORMED/ROLLED PROFILES
7. MATERIAL CERTIFICATE TO BE SUPPLIED

BOM_ 50201231				
ITEM #	QTY.	DESCRIPTION	LENGTH	PLATE
1	1	PLATE, TOP TREAD PLATE	646	5
2	1	PROFILE, OUTER WALL	1980.86	5
3	1	PLATE, BEAM	371	5
4	1	PROFILE, LIFTING BOTTOM	143	3
5	1	PROFILE, LOCKING	124	3
6	1	PLATE, LOCKING	50	5
7	1	RHS 50 x 25 x 3	20	3
8	2	DIAMETER 10 ROUND BAR	28	

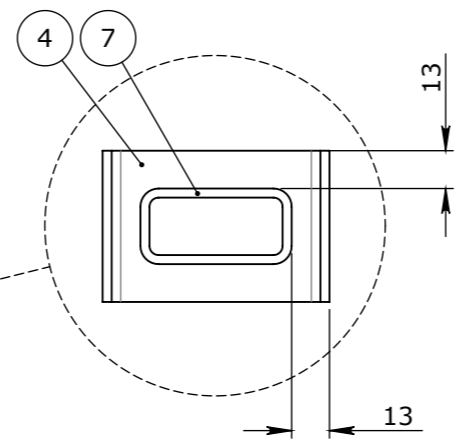


ISOMETRIC VIEW

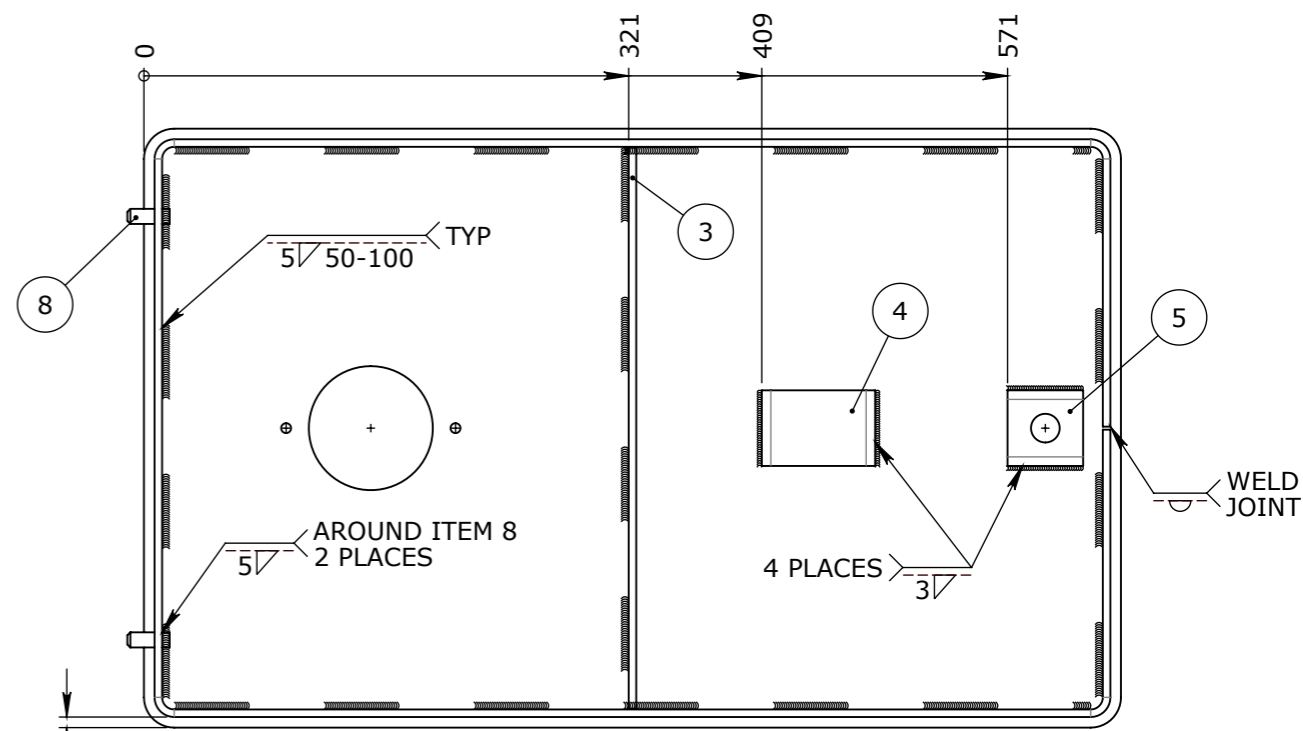
WELD TABLE	
LENGTH	WELD DETAIL
0-50mm	5  CONTINUOUS
50-100mm	5  (25) EACH END
100-200mm	5  (50-50)
200+	5  (50-100)



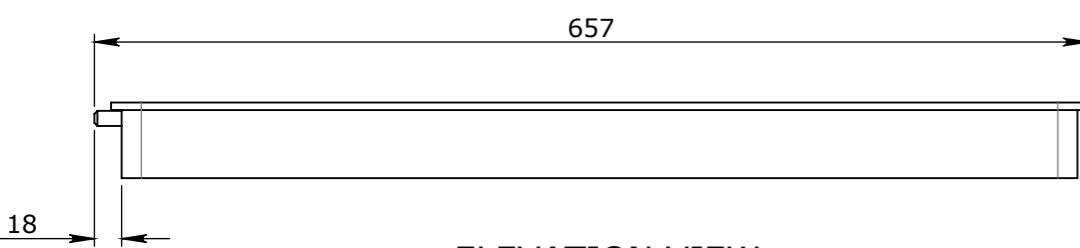
PLAN VIEW



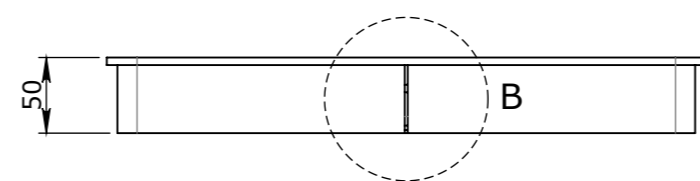
DETAIL A  
SCALE 2:5  
TOP PLATE REMOVED FOR CLARITY



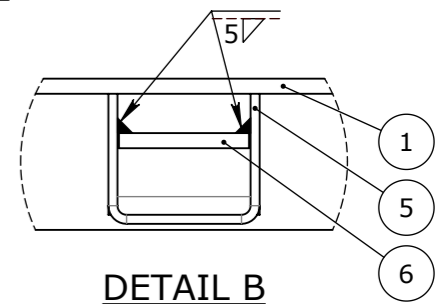
BOTTOM VIEW



ELEVATION VIEW



END VIEW



DETAIL B  
SCALE 2:5  
OUTER WALL REMOVED FOR CLARITY

UNCONTROLLED DOCUMENT WHEN PRINTED

1. MATERIAL SPECIFICATIONS UNO  
SECTIONS & FLATS - AS 3679 - GR 300+  
PLATES AS 3678 - GR 250  
SHS AS 1163 - GR 350
2. WELDING TO COMPLY TO AS 1554.1 UNO

Rev	DESCRIPTION	DATE:	BY:	ECO#:

GENERAL TOLERANCES				
NOMINAL SIZE	UP TO 150	ABOVE 150 UP TO 500	ABOVE 500	ANGULAR
TOL	±1.0	±2.0	±5.0	∠ X.X ± 0°30'

TOLERANCES - FABRICATION		
LINEAR X.XX ± 0.02	FACES SQUARE  0.05/100	ANGULAR  X.X ± 0°30' DIA. CONC WITHIN  0.05 TIR
LINEAR X.X ± 0.1	FACES PARALLEL  0.05/100	ANGULAR  X ± 1° EDGES CHAMFERED 1.0 x 45°
LINEAR X. ± 0.25	FACES FLAT  0.05/100	GENERAL SURFACE FINISH Ra  3.2

REVISION CONTROL		

CHK / APPR:	
DATE:	
RPEQ DOCUMENT #:	
WEIGHT:	14.41Kg
MATERIAL:	MS GR-250 GALV
SURFACE TREATMENT:	

HEAD OFFICE:  
CARNINGHAM ROAD  
BALLARAT, VIC 3351  
(03) 5335 8741

ENGINEERING & DEVELOPMENT:  
2 STRADBROKE STREET  
HEATHWOOD, QLD 4110  
(07) 3714 0444

THE INFORMATION DISCLOSED IN THIS DOCUMENT IS CONFIDENTIAL AND IS NOT WITHOUT THE EXPRESS CONSENT OF CUBIS SYSTEMS AUSTRALIA TO BE COPIED, REPRODUCED, OR GIVEN TO ANY OTHER PARTY IN ANY FORM AND THAT ALL COPYRIGHT, DESIGNS AND PATENTS VEST IN CUBIS SYSTEMS AUS.

PROJECT DESCRIPTION: <b>CUBIS SYSTEMS AUSTRALIA CATALOGUE PRODUCTS</b>				
DRAWING NAME: <b>AX S™ COVER GMS TO SUIT BELLTOP 5 NONSLIP LOCK ADAPTABLE CLASS C</b>				
DRAWN TO AS 1100 DO NOT SCALE FROM SHEET	DRAWING No: <b>50201231</b>	REV: <b>A</b>		
SHEET: <b>A3</b>	PAGE: <b>1/2</b>	SCALE UNO: <b>1:5</b>	DRAFTED DATE: <b>9/12/2019</b>	DRAFTED BY: <b>Y.J.SHAN</b>