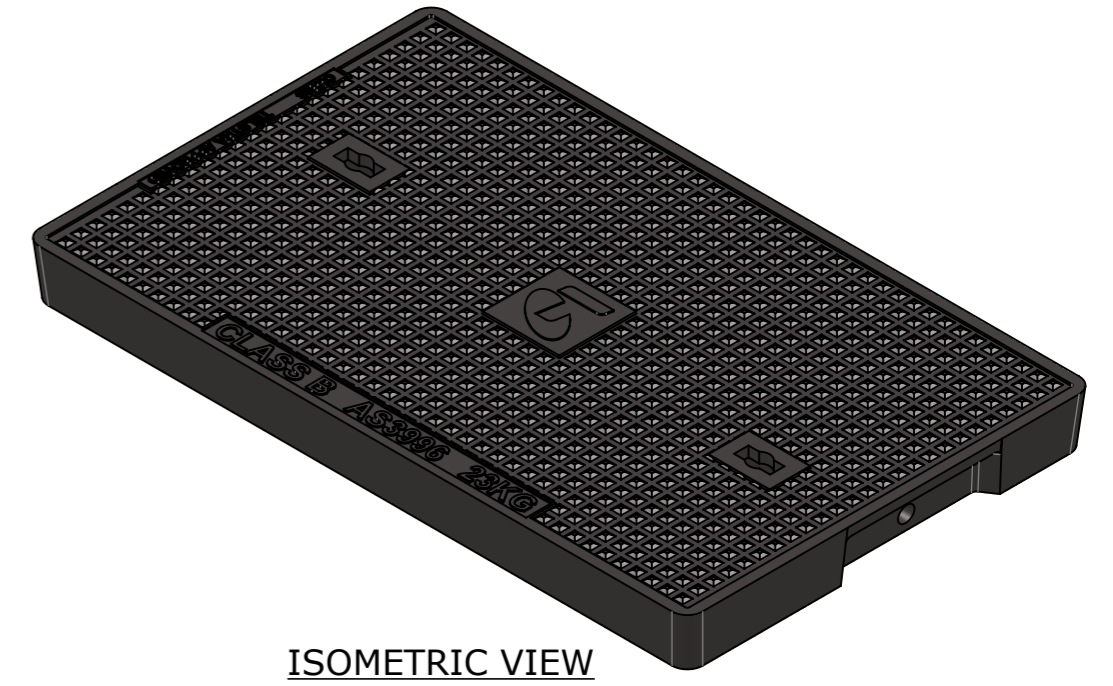
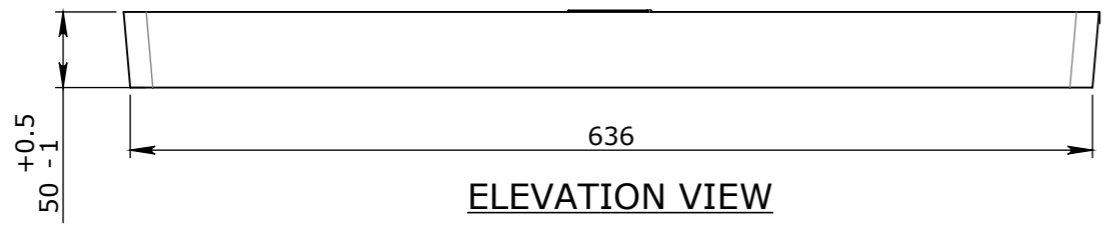


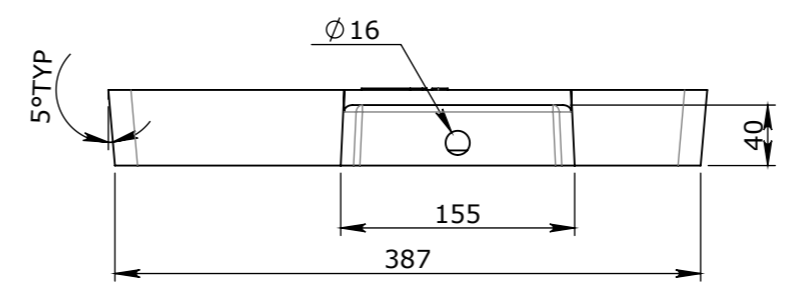
PLAN VIEW



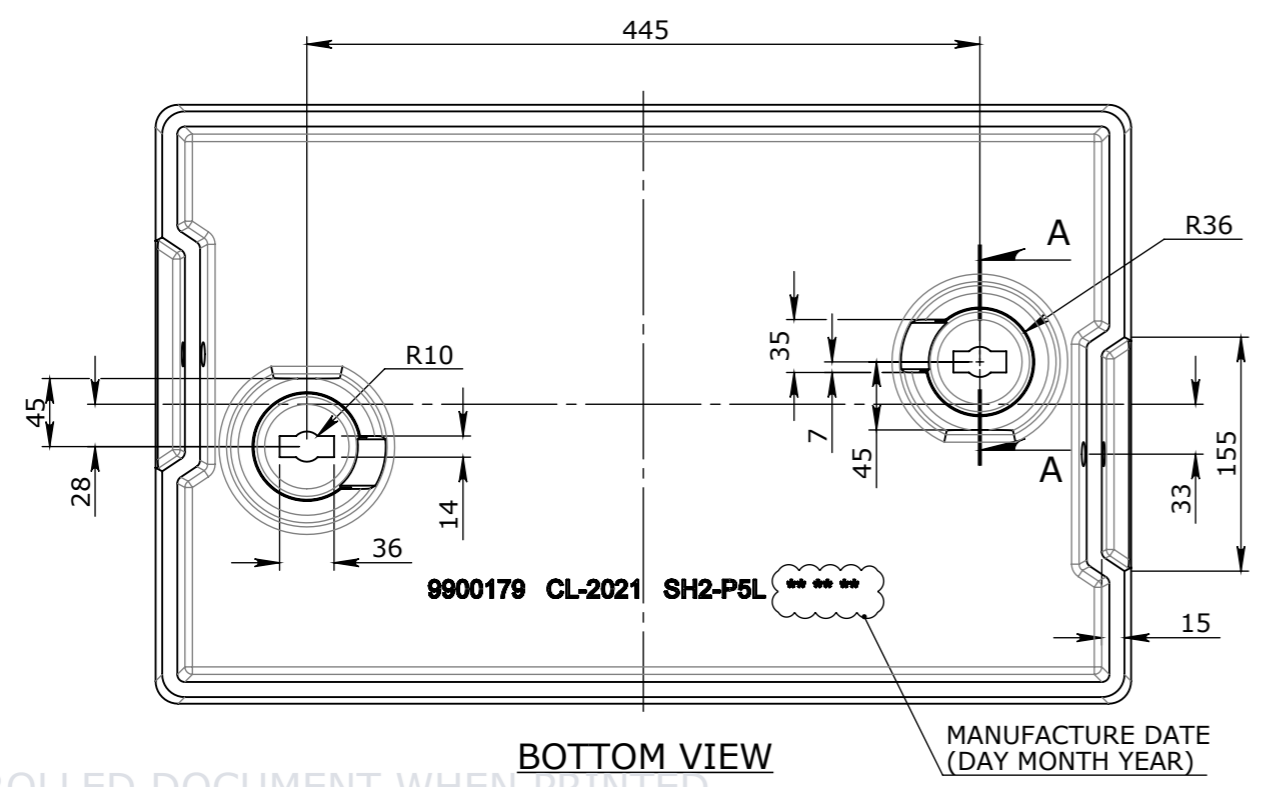
ISOMETRIC VIEW



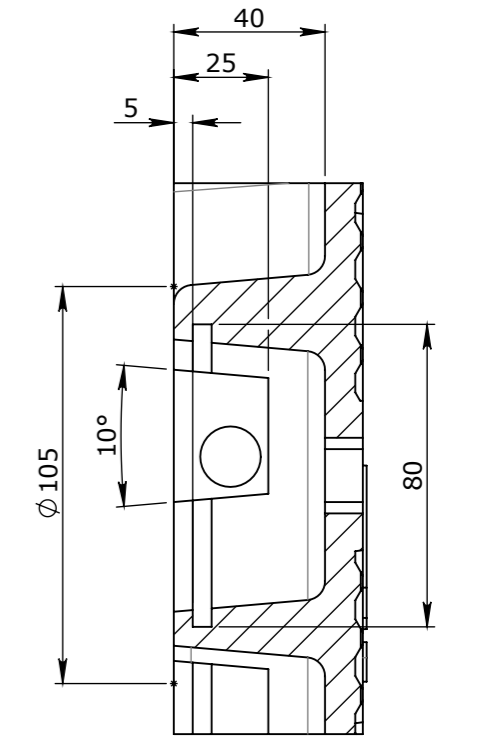
ELEVATION VIEW



END VIEW



BOTTOM VIEW



SECTION A-A  
SCALE 1 : 2

UNCONTROLLED DOCUMENT WHEN PRINTED

- MATERIAL SPECIFICATIONS UNO  
SECTIONS & FLATS - AS 3679 - GR 300+  
PLATES AS 3678 - GR 250  
SHS AS 1163 - GR 350
- WELDING TO COMPLY TO AS 1554.1 UNO

Rev	DESCRIPTION	DATE:	BY:	ECO#:

GENERAL TOLERANCES				
NOMINAL SIZE	UP TO 150	ABOVE 150 UP TO 500	ABOVE 500	ANGULAR $\angle X.X \pm 0^\circ 30'$
TOL	$\pm 1.0$	$\pm 2.0$	$\pm 5.0$	$\angle X \pm 1^\circ$

TOLERANCES - FABRICATION			REVISION CONTROL	
LINEAR X.XX $\pm 0.02$	FACES SQUARE $\perp 0.05/100$	ANGULAR $\angle X.X \pm 0^\circ 30'$ DIA. CONC WITHIN $\bigcirc 0.05$ TIR		
LINEAR X.X $\pm 0.1$	FACES PARALLEL $\parallel 0.05/100$	ANGULAR $\angle X \pm 1^\circ$ EDGES CHAMFERED 1.0 x 45°		
LINEAR X. $\pm 0.25$	FACES FLAT $\nabla 0.05/100$	GENERAL SURFACE FINISH $Ra \sqrt{3.2}$		

CHK / APPR:	
DATE:	
RPEQ DOCUMENT #:	
WEIGHT:	26.62Kg
MATERIAL:	CAST IRON
SURFACE TREATMENT:	

HEAD OFFICE:  
CARNINGHAM ROAD  
BALLARAT, VIC 3351  
(03) 5335 8741

ENGINEERING & DEVELOPMENT:  
2 STRADBROKE STREET  
HEATHWOOD, QLD 4110  
(07) 3714 0444

THE INFORMATION DISCLOSED IN THIS DOCUMENT IS CONFIDENTIAL AND IS NOT WITHOUT THE EXPRESS CONSENT OF CUBIS SYSTEMS AUSTRALIA TO BE COPIED, REPRODUCED, OR GIVEN TO ANY OTHER PARTY IN ANY FORM AND THAT ALL COPYRIGHT, DESIGNS AND PATENTS VEST IN CUBIS SYSTEMS AUS.

PROJECT DESCRIPTION: <b>CUBIS SYSTEMS AUSTRALIA CATALOGUE PRODUCTS</b>				
DRAWING NAME: <b>AX S™ P5 COVER CAST IRON TELSTRA LOCK ADPAT CLASS B</b>				
DRAWN TO AS 1100 DO NOT SCALE FROM SHEET	DRAWING No: <b>50201226</b>	REV: <b>A</b>		
SHEET: <b>A3</b>	PAGE: <b>1/1</b>	SCALE UNO: <b>1:5</b>	DRAFTED DATE: <b>8/10/2015</b>	DRAFTED BY: <b>P.ADAMS</b>