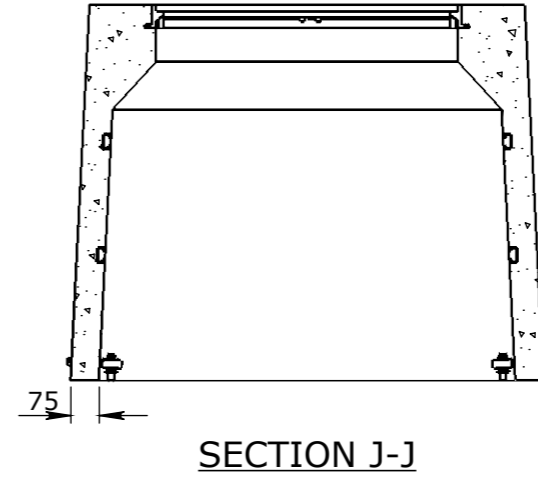
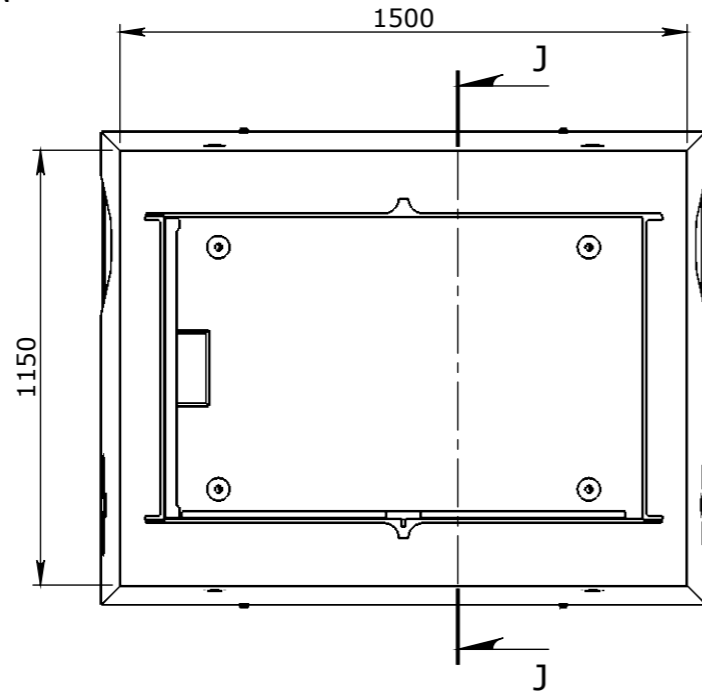
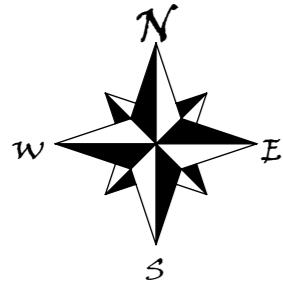
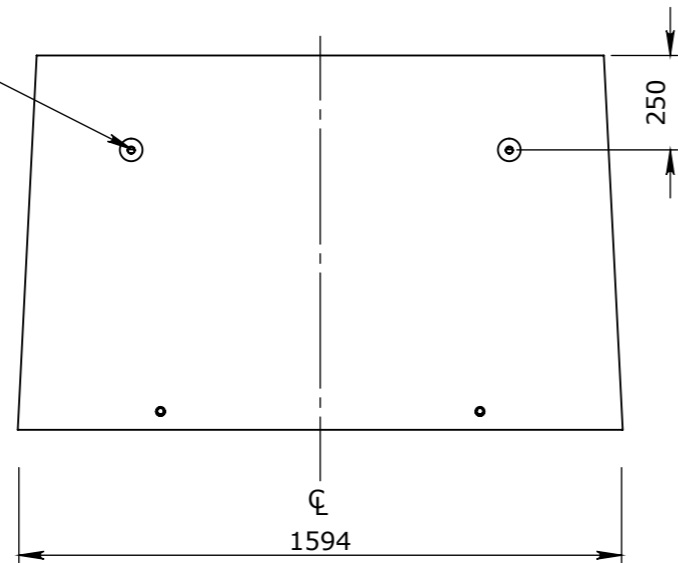


CONCRETE PRODUCT NOTE:

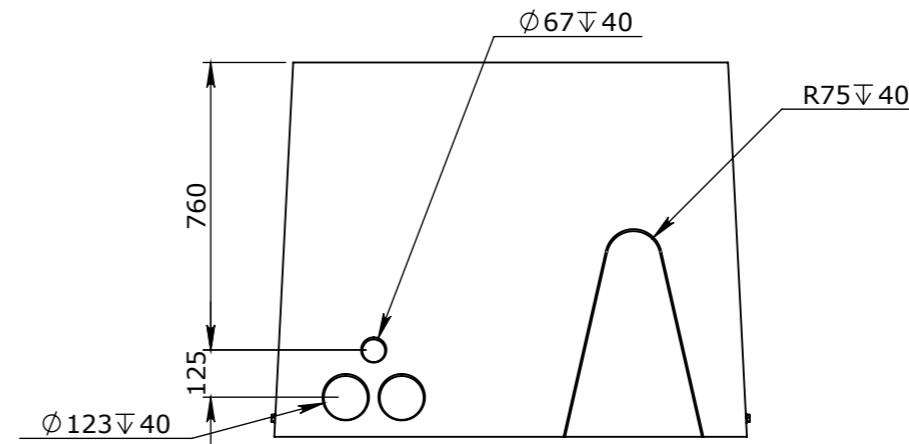
1. REFER TO GENERAL TOLERANCES UNO
2. REFER TO DRAWING [522375] GENERAL ARRANGEMENT
3. 40MPA FIBRE REINFORCED CONCRETE - (FIBERCON MP47 AT 5KG/M3)
4. ALL LIFTING POINTS TO BE USED WHEN LIFTING
5. MINIMUM STRENGTH OF CONCRETE SHALL BE 25MPA AT THE TIME OF LIFTING
6. COVER TO REINFORCEMENT TO BE 35mm
7. REFER TO ANCON LIFTING ARRANGEMENT PLAN



4x2.5Tx55 FOOT ANCHORS



SOUTH FACE
NORTH FACE



EAST FACE
WEST FACE

1. MATERIAL SPECIFICATIONS UNO
SECTIONS & FLATS - AS 3679 - GR 300+
PLATES AS 3678 - GR 250
SHS AS 1163 - GR 350
2. WELDING TO COMPLY TO AS 1554.1 UNO

Rev	DESCRIPTION	DATE	BY	APPROVED
3				
2				
1				

CHK / APPR: CA
DATE: 08/10/2018
RPEQ DOCUMENT #:



HEAD OFFICE:
CARNGHAM ROAD
BALLARAT, VIC 3351
(03) 5335 8741

ENGINEERING & DEVELOPMENT:
2 STRADBROKE STREET
HEATHWOOD, QLD 4110
(07) 3714 0444

DRAFTED DATE: 5/05/2016
DRAFTED BY:
DATE LAST SAVED: 10/02/2022
LAST SAVED BY: nbradic
DRAWN TO AS 1100 DO NOT SCALE FROM SHEET

PROJECT: BVC Group CONCRETE PRODUCTION CATALOGUE ITEM	REV 0
NAME: TYPE A CONCRETE PIT ASSEMBLY	
DRAWING No: 50201224-01REO F	
PROJECT / CATALOGUE CODE: 522370	SCALE UNO: 1:20
PAGE: 1 / 1	SHEET: A3

GENERAL TOLERANCES				
NOMINAL SIZE	UP TO 150	ABOVE 150 UP TO 500	ABOVE 500	ANGULAR ∠ X.X±0°30'
TOL	±1.0	±2.0	±5.0	∠ X ± 1°

TOLERANCES - FABRICATION		
LINEAR X.XX ± 0.02	FACES SQUARE ⊥ 0.05/100	ANGULAR ∠ X.X ± 0°30' DIA. CONC WITHIN Ⓞ 0.05 TIR
LINEAR X.X ± 0.1	FACES PARALLEL // 0.05/100	ANGULAR ∠ X ± 1° EDGES CHAMFERED 1.0 x 45°
LINEAR X. ± 0.25	FACES FLAT ▱ 0.05/100	GENERAL SURFACE FINISH Ra ^{3.2} √

REVISION CONTROL	
LINEAR X.XX ± 0.02	FACES SQUARE ⊥ 0.05/100
LINEAR X.X ± 0.1	FACES PARALLEL // 0.05/100
LINEAR X. ± 0.25	FACES FLAT ▱ 0.05/100

WEIGHT: 1573Kg
MATERIAL:
SURFACE TREATMENT:

THE INFORMATION DISCLOSED IN THIS DOCUMENT IS CONFIDENTIAL AND IS NOT WITHOUT THE EXPRESS CONSENT OF CUBIS SYSTEMS AUSTRALIA TO BE COPIED, REPRODUCED, OR GIVEN TO ANY OTHER PARTY IN ANY FORM AND THAT ALL COPYRIGHT, DESIGNS AND PATENTS VEST IN CUBIS SYSTEMS AUS.