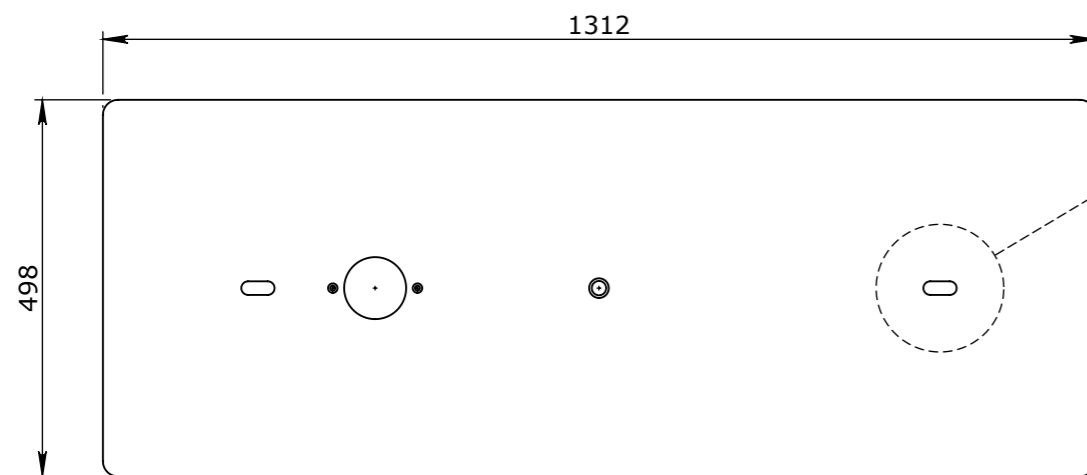


FABRICATION NOTE:

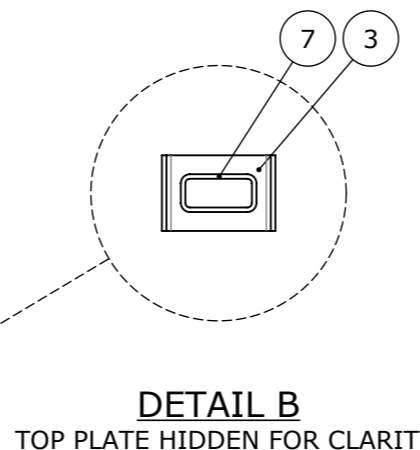
1. REFER TO TOLERANCES - FABRICATION UNO
2. WELDS TO COMPLY WITH AS 1554-1
3. 5mm CONTINUOUS FILLET WELDS UNO
4. ALL SHEET & PLATE PROFILES TO BE MACHINE CUT FROM .DXF FILES, SOME DIMENSIONS OMITTED
5. REMOVE ALL BURRS & SHARP EDGES
6. * DENOTES FORMED/ROLLED PROFILES
7. MATERIAL CERTIFICATE TO BE SUPPLIED

BOM_ 50201223

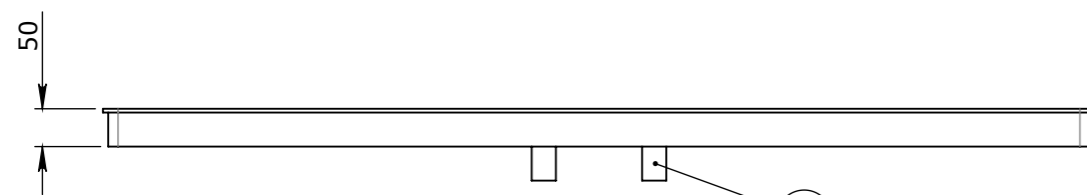
ITEM #	QTY.	DESCRIPTION	LENGTH	PLATE
1	1	PLATE, TOP TREADPLATE	1312	5
2	1	PROFILE, OUTER WALL	3516.85	5
3	2	PROFILE, LIFTING BOTTOM	141	3
4	1	PROFILE, CENTRE HOLE	64	3
5	4	PLATE, RIB	473	5
6	2	PLATE, TAB	90	5
7	2	RHS 50 x 25 x 3	20	3



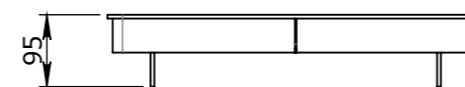
PLAN VIEW



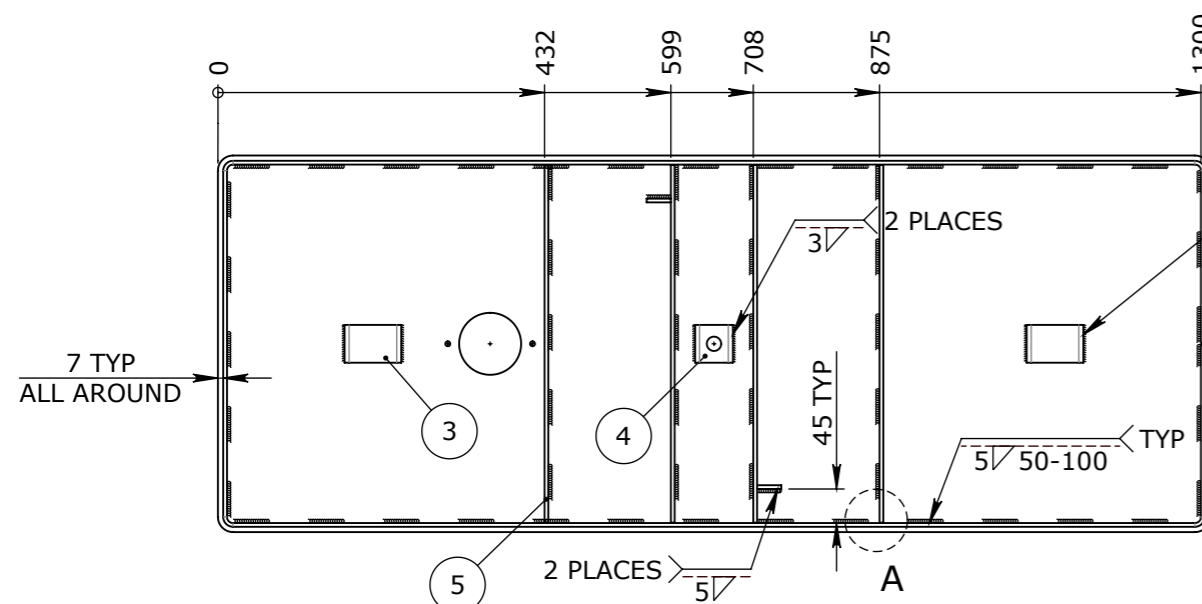
DETAIL B
TOP PLATE HIDDEN FOR CLARITY



ELEVATION VIEW

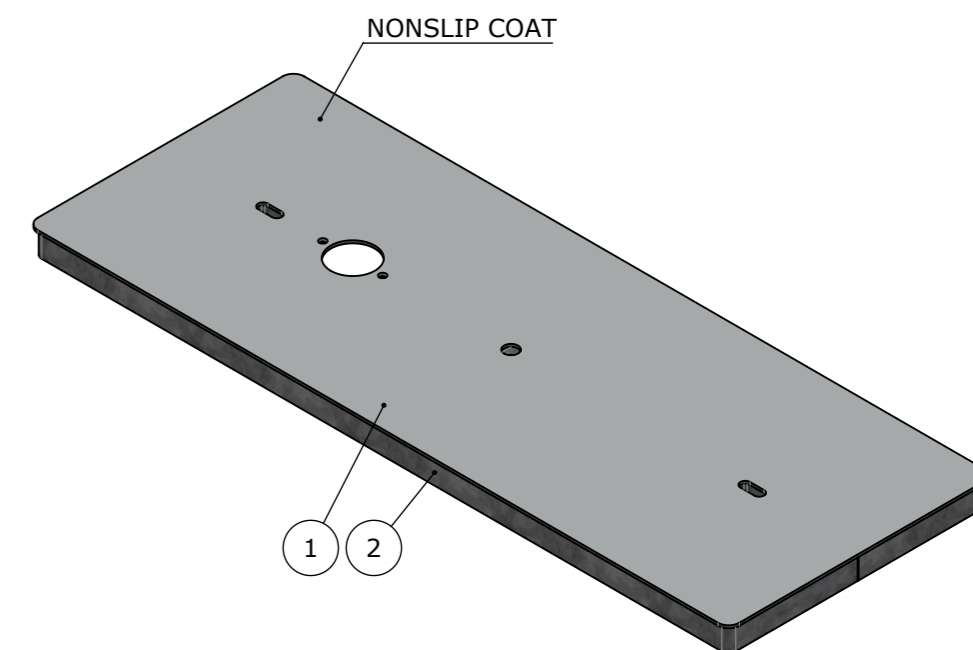


END VIEW



BOTTOM VIEW

DETAIL A
SCALE 1:5
ALL VERTICAL WELDS TO BE CONTINUOUS TYP ("T" JOIN)



ISOMETRIC VIEW

UNCONTROLLED DOCUMENT WHEN PRINTED

1. MATERIAL SPECIFICATIONS UNO SECTIONS & FLATS - AS 3679 - GR 300+ PLATES AS 3678 - GR 250 SHS AS 1163 - GR 350
2. WELDING TO COMPLY TO AS 1554.1 UNO

GENERAL TOLERANCES			
NOMINAL SIZE	UP TO 150	ABOVE 150 UP TO 500	ANGULAR $\angle X.X \pm 0^\circ 30'$
TOL	± 1.0	± 2.0	$\angle X \pm 1^\circ$

TOLERANCES - FABRICATION		
LINEAR X.XX ± 0.02	FACES SQUARE $\perp 0.05/100$	ANGULAR $\angle X.X \pm 0^\circ 30'$ DIA. CONC WITHIN $\odot 0.05$ TIR
LINEAR X.X ± 0.1	FACES PARALLEL $\parallel 0.05/100$	ANGULAR $\angle X \pm 1^\circ$ EDGES CHAMFERED 1.0 x 45°
LINEAR X. ± 0.25	FACES FLAT $\nabla 0.05/100$	GENERAL SURFACE FINISH $Ra \sqrt{3.2}$

REVISION CONTROL			
Rev	DESCRIPTION	DATE:	BY:

CHK / APPR:	
DATE:	
RPEQ DOCUMENT #:	
WEIGHT:	35.67Kg
MATERIAL:	MS GR-250 GALV
SURFACE TREATMENT:	

HEAD OFFICE:
CARNINGHAM ROAD
BALLARAT, VIC 3351
(03) 5335 8741

ENGINEERING & DEVELOPMENT:
2 STRADBROKE STREET
HEATHWOOD, QLD 4110
(07) 3714 0444

THE INFORMATION DISCLOSED IN THIS DOCUMENT IS CONFIDENTIAL AND IS NOT WITHOUT THE EXPRESS CONSENT OF CUBIS SYSTEMS AUSTRALIA TO BE COPIED, REPRODUCED, OR GIVEN TO ANY OTHER PARTY IN ANY FORM AND THAT ALL COPYRIGHT, DESIGNS AND PATENTS VEST IN CUBIS SYSTEMS AUS.

PROJECT DESCRIPTION: CUBIS SYSTEMS AUSTRALIA CATALOGUE PRODUCTS			
DRAWING NAME: AX S™ COVER GMS TO SUIT BELLTOP 8 LOCKABLE NONSLIP			
DRAWN TO AS 1100 DO NOT SCALE FROM SHEET	DRAWING No: 50201223	REV: A	
SHEET: A3	PAGE: 1/2	SCALE UNO: 1:10	DRAFTED DATE: 26/11/2019