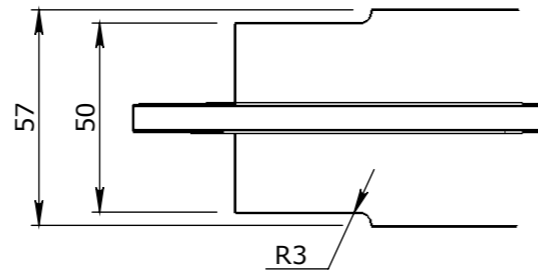
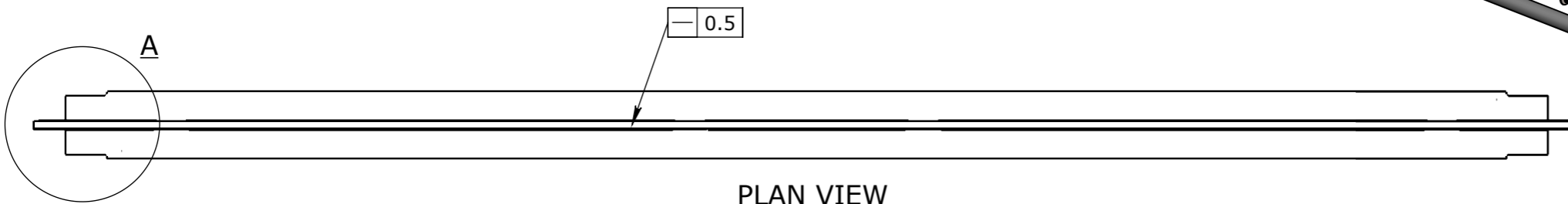


NOTE:

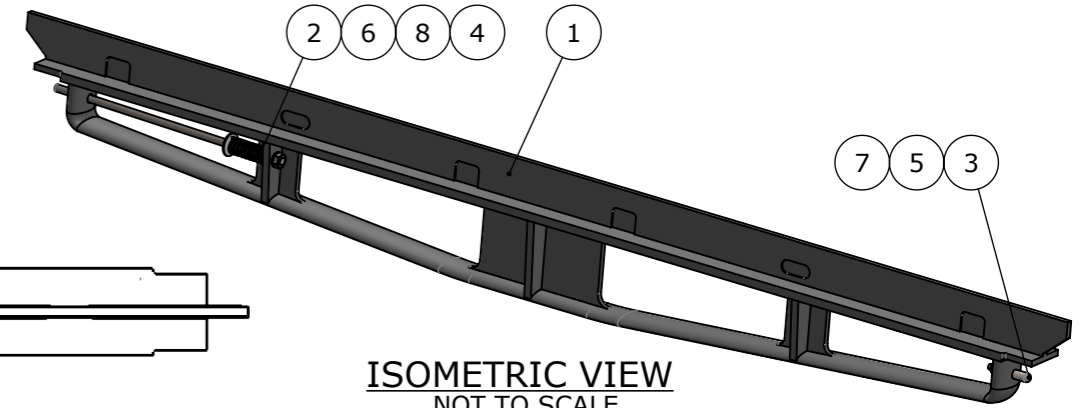
1. REMOVE ALL BURRS AND SHARP EDGES
2. MATERIAL: SG CAST IRON GRADE 500/320/7 TO AS1831
3. CAST SURFACES PAINTED COLOR BLACK USING SOLVENT BASED ACID ETCH SUPER ETCH PRIMER. WATTYLE 239-MCRFC OR EQUIVALENT. SEE WEBSITE: www.wattyl.com.au



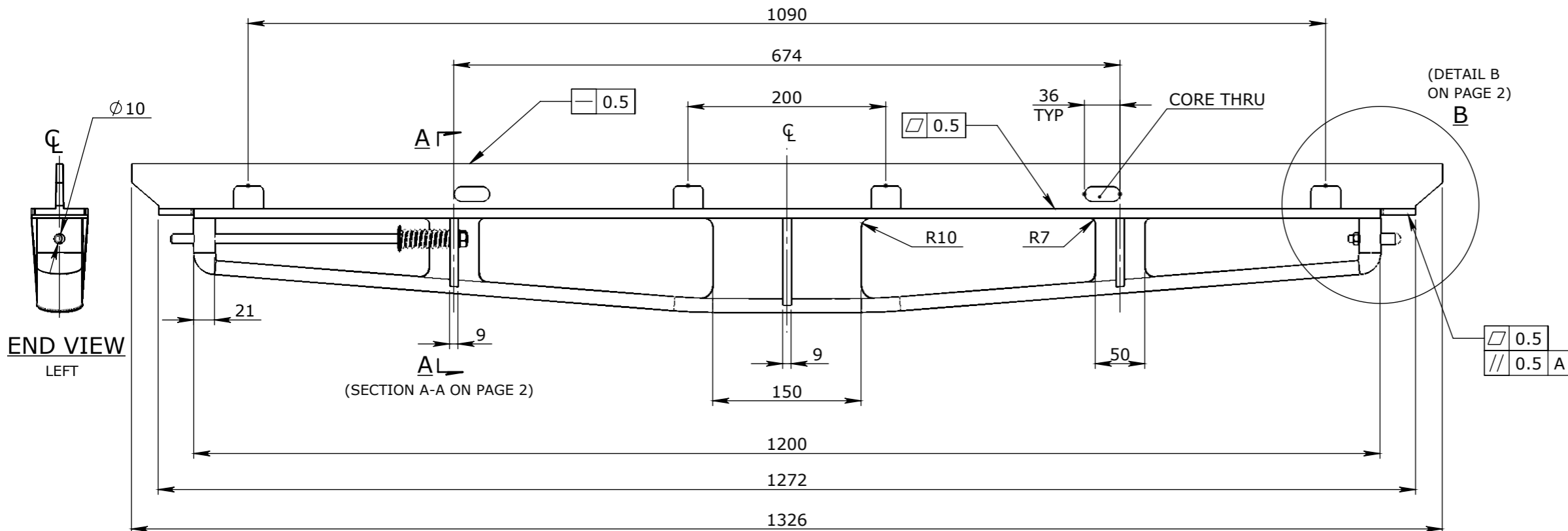
DETAIL A
SCALE 1:2



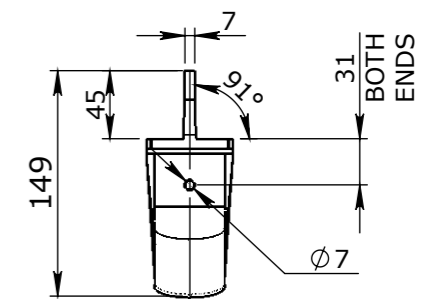
PLAN VIEW



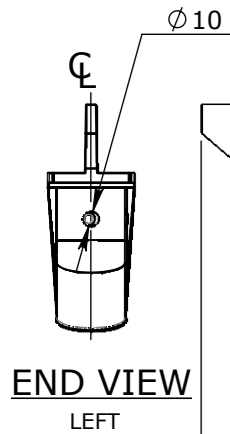
ISOMETRIC VIEW
NOT TO SCALE



ELEVATION VIEW



END VIEW
RIGHT



END VIEW
LEFT

| BILL OF MATERIALS - 50201035 | | | |
|-------------------------------------|------|-------------|----------------------------------|
| ITEM # | QTY. | PART # | EPICORE DESCRIPTION |
| 1 | 1 | 50201035-01 | MANHOLE CAST IRON CROSS BAR |
| 2 | 1 | 50201035-02 | MANHOLE CAST IRON - LOCK BAR |
| 3 | 1 | 50201035-03 | MANHOLE CROSS BAR STAY |
| 4 | 1 | 50201035-04 | MANHOLE CROSS BAR 1326mm, SPRING |
| 5 | 1 | | WASHER FLAT GALVANISED M6 |
| 6 | 1 | | WASHER FLAT GALVANISED M8 |
| 7 | 1 | | NUT PLAIN GALVANISED M6 |
| 8 | 1 | | NUT PLAIN GALVANISED M8 |

UNCONTROLLED DOCUMENT WHEN PRINTED

1. MATERIAL SPECIFICATIONS UNO SECTIONS & FLATS - AS 3679 - GR 300+ PLATES AS 3678 - GR 250 SHS AS 1163 - GR 350
2. WELDING TO COMPLY TO AS 1554.1 UNO

| Rev | DESCRIPTION | DATE: | BY: | ECO#: |
|-----|-------------|-------|-----|-------|
| | | | | |

| GENERAL TOLERANCES | | | | |
|--------------------|-----------|---------------------|-----------|---------------|
| NOMINAL SIZE | UP TO 150 | ABOVE 150 UP TO 500 | ABOVE 500 | ANGULAR |
| TOL | ±1.0 | ±2.0 | ±5.0 | ∠ X.X ± 0°30' |

| TOLERANCES - FABRICATION | | |
|--------------------------|----------------------------|---|
| LINEAR X.XX ± 0.02 | FACES SQUARE ⊥ 0.05/100 | ANGULAR ∠ X.X ± 0°30' DIA. CONC WITHIN Ⓞ 0.05 TIR |
| LINEAR X.X ± 0.1 | FACES PARALLEL // 0.05/100 | ANGULAR ∠ X ± 1° EDGES CHAMFERED 1.0 x 45° |
| LINEAR X. ± 0.25 | FACES FLAT ▱ 0.05/100 | GENERAL SURFACE FINISH Ra 3.2 |

| REVISION CONTROL | | |
|------------------|--|--|
| | | |

| | |
|--------------------|--------------------------|
| CHK / APPR: | CA |
| DATE: | 24/04/2019 |
| RPEQ DOCUMENT #: | |
| WEIGHT: | 14Kg |
| MATERIAL: | Material <not specified> |
| SURFACE TREATMENT: | |

HEAD OFFICE:
CARNINGHAM ROAD
BALLARAT, VIC 3351
(03) 5335 8741

ENGINEERING & DEVELOPMENT:
2 STRADBROKE STREET
HEATHWOOD, QLD 4110
(07) 3714 0444

THE INFORMATION DISCLOSED IN THIS DOCUMENT IS CONFIDENTIAL AND IS NOT WITHOUT THE EXPRESS CONSENT OF CUBIS SYSTEMS AUSTRALIA TO BE COPIED, REPRODUCED, OR GIVEN TO ANY OTHER PARTY IN ANY FORM AND THAT ALL COPYRIGHT, DESIGNS AND PATENTS VEST IN CUBIS SYSTEMS AUS.

| | | | |
|---|--------------------------------|-----------------------|---------------------------------|
| PROJECT DESCRIPTION: CUBIS SYSTEMS AUSTRALIA CATALOGUE PRODUCTS | | | |
| DRAWING NAME: MANHOLE CROSS BAR LOCKABLE 1326mm | | | |
| DRAWN TO AS 1100 DO NOT SCALE FROM SHEET | DRAWING No: 50201035 | REV: B | |
| SHEET: A3 | PAGE: 1/2 | SCALE UNO: 1:5 | DRAFTED DATE: 29/06/2018 |