


# HS6 RING SECTION

Product Code: 50202357

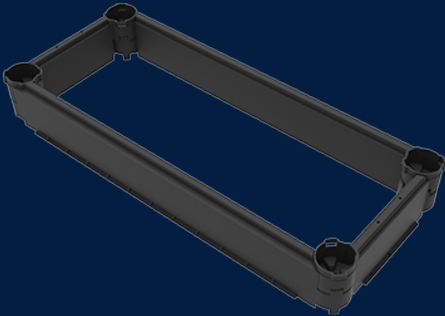


Additional HS6 Riser Ring that will assist in bringing your pit to ground level.

 MATERIAL  
High Density Polyethylene (HDPE)

 SIZE  
1020mm (L) x 550mm (W) x 170mm (D)

 LOAD RATING  
B



## Features & benefits

### Stackable Sections

Pit systems are built by stacking sections to required depth.

### Strength in the Corners

The fortress is strongest in the corners, where loadings are at their maximum.

### Flexible During Installation

Duct entries can be easily created on site using a hole saw and drill. Sections can be cut to build over on existing networks.

## Full specifications



## Contact Us

Email: [sales@cubis-systems.com.au](mailto:sales@cubis-systems.com.au)

Phone: 1800 665 356