


# ENCASEMENT GRATE 1300X1300X250 WITH 900x900 CLASS D

Product Code: 50206967

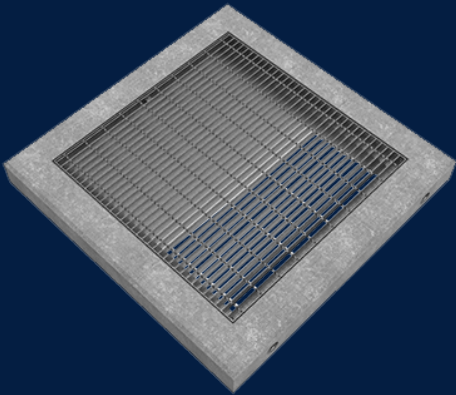


Infrastructure Products Australia' precast encasements are manufactured using a 40MPa steel reinforced concrete and come in a variety of sizes to suit Infrastructure Products Australia' broad range of access covers, including GMS and cast iron covers.

 MATERIAL  
Ductile Cast Iron, Precast Concrete

 SIZE  
1300mm (L) x 1300mm (W) x 250mm (D)

 LOAD RATING  
D



## Features & benefits

### Variability in size

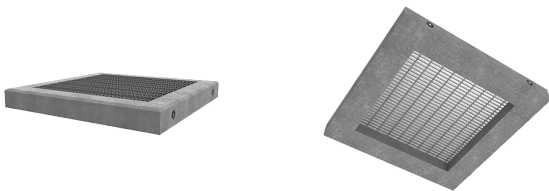
Our precast encasement range comes in a variety of sizes to accommodate for our broad range of access cover options to ensure you have the right combination for your project.

### Heavy duty applications

Manufactured using steel reinforced 40MPa concrete, Infrastructure Products Australia' precast encasements are an excellent solution for heavy duty applications.

### Extensive life span

Design engineered to meet industry and installation requirements, your precast encasement is guaranteed to withstand even the harshest conditions.



## Full specifications

Material	High strength concrete has a compressive strength of 40MPa or greater. Infrastructure Products Australia manufactures their precast encasements using steel reinforced concrete to ensure a minimum of 40MPa. This ensures that our precast encasements remain durable and robust throughout their lifetime.
Load Rating	Infrastructure Products Australia' precast encasements are manufactured a Class D load rating (a serviceability design load of 900kN) under the Australian Standard AS/NZ 3996.

Contact Us

Email: [sales@cubis-systems.com.au](mailto:sales@cubis-systems.com.au)

Phone: 1800 665 356