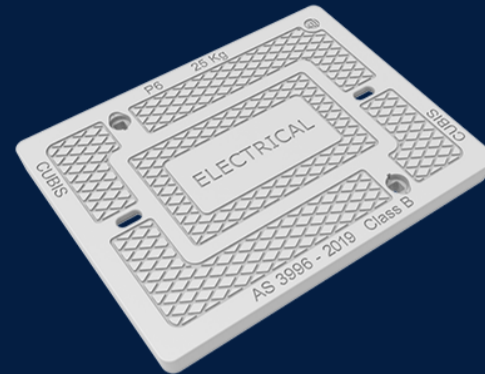


# AX S™ P6 COVER COMPOSITE SMART ELEC LOCK ADAPT CLASS B

Product Code: 50202568

Designed by Infrastructure Products Australia technical team, our composite covers are durable, slip-resistant and meet Australian Standard - AS/NZ 3996 with the ability to provide you with greater transparency by using the NFC embedded chips and the ability to add additional security with our Locking Mechanism kits.



 MATERIAL  
Composite

 SIZE  
651mm (L) x 499mm (W) x 50mm (D)

 LOAD RATING  
B

## Features & benefits

### What is Lock Adapt?

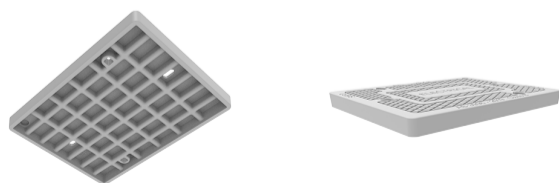
This composite cover can have two locks installed to enhance the security of your pit quickly and easily with the purchase of our Locking Mechanism kits. You'll find these below in related products.

### NFC Technology Embedded in every Composite Cover

Designed by Infrastructure Products Australian, the team have smartly provided major communication companies with the ability to GEO Map, track maintenance and record pits, offering increased visibility and protection of network assets.

### Customisable to suit your brand

We can customise our composite range to suit your brand or application requirements, and we work with major Australian Authorities who do this regularly and have approved our composite covers.



## Full specifications

|                      |  |
|----------------------|--|
| Material             | Composite covers are manufactured from a reinforced composite, resulting in a more robust and withstanding product than regular concrete covers. They are also lightweight and exceed specific OH&S standards, making them suitable for a one-person lift. |
| Australian Standards | Our composite access cover range is designed and built for a Class B load rating, meeting the Australian Standard AS/NZ 3996.  |
| Load Rating          | Composite covers are a Class B load rating (ultimate limit state design of 100kN) under the Australian Standard AS/NZ 3996. This makes our composite covers suitable for private and shared residential property and vehicles accessing driveways.         |