

# AX S™ MANHOLE COVER CAST IRON 636x608

Product Code: 50201058

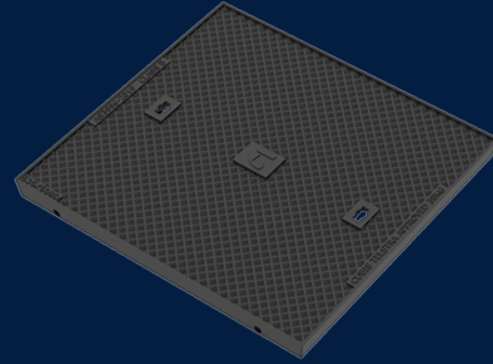


Our full Cast Iron Cover range delivers a strength and durability solution that can be applied in industry sectors including Communications, Energy, Transportation and Water.

 MATERIAL  
Ductile Cast Iron

 SIZE  
636mm (L) x 608mm (W) x 54mm (D)

 LOAD RATING  
B



## Features & benefits

### Superior design that meets Australian Standards

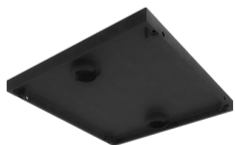
Infrastructure Products Australia cast iron cover range is designed and built up to a Class D load rating, meeting the Australian Standard AS/NZ 3996.

### Locking and security capabilities

Our cast iron cover range has locking and security capabilities to ensure the utmost protection for your valuable assets.

### Personalised for your Client, Customer or Project

We can customise these cast iron covers to showcase a company's company or the cover's unique application.



## Full specifications

Material	Ductile iron covers are manufactured from spheroidal graphite cast iron to achieve specified tensile strength and elongation requirements. Ductile iron covers can be utilised in a variety of applications to meet strength and durability requirements.
----------	---

Contact Us

Email: [sales@cubis-systems.com.au](mailto:sales@cubis-systems.com.au)

Phone: 1800 665 356