

KERB UNIT INTAKE TMR LIL SAG 4800MM

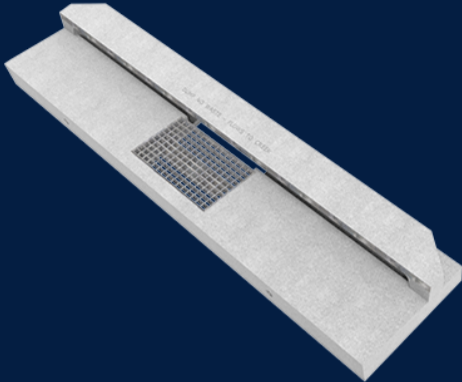
Product Code: 50207099



MATERIAL
Ductile Cast Iron, Precast Concrete

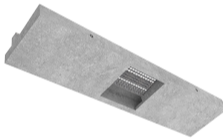
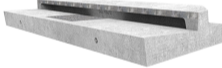
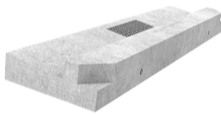
SIZE
4800mm (L) x 1135mm (W) x 417mm (D)

LOAD RATING
A



Features & benefits

[Full specifications](#)



Contact Us

Email: sales@cubis-systems.com.au

Phone: 1800 665 356