


PIT CONCRETE 900X900X900X100MM REBATE STORM WATER CLASS D



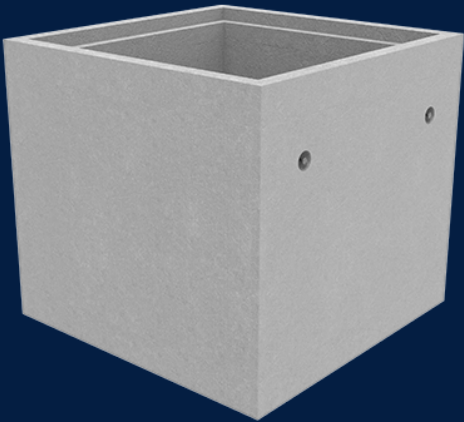
Product Code: 50201650

Infrastructure Products Australia' precast concrete stormwater pits offer a comprehensive range of pits to ensure the best solution is available for your individual project needs. Standard, heavy duty and bespoke stormwater pits are available with knockout options.

 MATERIAL
Precast Concrete

 SIZE
(L) x (W) x (D)

 LOAD RATING
D



Features & benefits

Risers, Covers and Grates Available as a Set

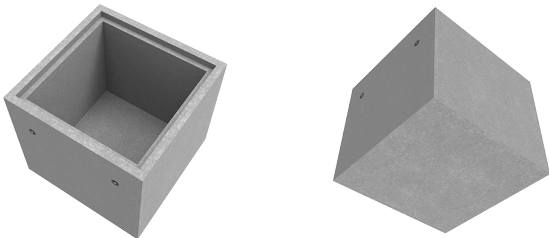
Risers are available to permit flexibility in meeting drain pipe depth requirements. Robust covers and grates are available to suit most light industrial or commercial applications

Bespoke Capabilities

Customisation of our precast concrete stormwater pits is available to suit the unique requirements of your project, so that you can be confident you're getting exactly what you need. Our in-house design engineering team can assist you in the creation of the exact pit of your choice.

Extensive Life Span

Design engineered to meet industry and installation requirements, the quality of your pit is guaranteed to withstand even the harshest conditions.



Full specifications

Material	High strength concrete has a compressive strength of 40MPa or greater. Infrastructure Products Australia manufactures their precast concrete stormwater pits using fibre reinforced concrete mix to ensure a minimum of 40MPa. This ensures that the pits remain durable and robust throughout their lifetime.
Australian Standards	Our precast concrete stormwater pits can be designed and built a Class D load rating, meeting the Australian Standard AS/NZ 3996. We also use minimum 40MPa concrete to ensure robustness and superior asset protection.
Load Rating	Infrastructure Products Australia' standard precast concrete stromwater pits are manufactured a Class D load rating (ultimate limit state design of 240 kN) under the Australian Standard AS/NZ 3996.

Contact Us

Email: sales@cubis-systems.com.au

Phone: 1800 665 356