


# STAKKABOX™ FORTRESS 1220XD150


Product Code: 50201760

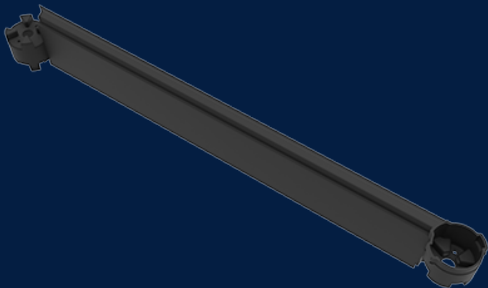


STAKKAbox™ Fortress is a range of modular and structural preformed access pits, suitable for use across all major industry sector projects. The Fortress system is moulded in HDPE and possesses excellent strength to weight properties.

 MATERIAL  
High Density Polyethylene (HDPE)

 SIZE  
(L) x (W) x (D)

 LOAD RATING  
B



## Features & benefits

### Fast and Easy to Install

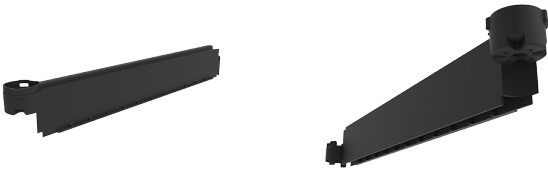
STAKKAbox™ pits are significantly faster to install than conventional alternatives, with complete installations typically taking up to one hour. This results in reduced costs for the installer. No specialist equipment or plant is required in order to install the pit and there is no need for specialist box builders.

### Flexible During Installation

Pits can be adapted to suit on site conditions with standard tools to overbuild over existing networks, Introduce duct entries for cable entry and for top-section fine adjustment.

### Flat Pack Option

Fortress can be supplied in 'flat pack' format to make shipping more efficient, as well as allowing flexibility in delivery and installation.



## Full specifications

Material	STAKKAbox™ Fortress is manufactured in nitrogen-foamed High Density Polyethylene (HDPE), of which up to 70% is recycled material. HDPE possesses excellent strength to weight properties.
Load Rating	STAKKAbox™ Fortress is suitable for installation in environments rated up to Class C load rating (ultimate limit state design of 150kN) under the Australian Standard AS/NZ 3996.
How it works	The system provides contractors with a means of constructing access pits quickly and inexpensively, while offering improved build quality, reduced defects and enhanced site safety performance.

Contact Us

Email: [sales@cubis-systems.com.au](mailto:sales@cubis-systems.com.au)

Phone: 1800 665 356