


# ENCASEMENT SCEC 1800X1800X200 TO SUIT AX S™ SCEC SL1 TO SUIT 1100x900 OPENING COVER GMS



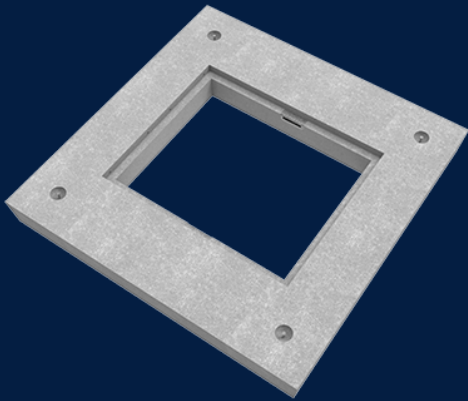
Product Code: 50202436

Infrastructure Products Australia's precast encasements are manufactured using a 40MPa steel reinforced concrete and come in a variety of sizes to suit Infrastructure Products Australia's broad range of access covers, including GMS and cast iron covers.

 MATERIAL  
Precast Concrete

 SIZE  
1843mm (L) x 1843mm (W) x 200mm (D)

 LOAD RATING  
D



## Features & benefits

### Variability in size

Our precast encasement range comes in a variety of sizes to accommodate for our broad range of access cover options to ensure you have the right combination for your project.

### Extensive life span

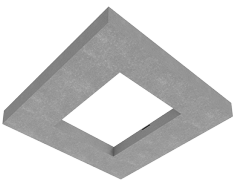
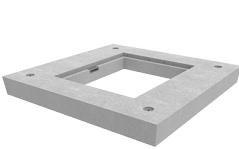
Design engineered to meet industry and installation requirements, your precast encasement is guaranteed to withstand even the harshest conditions.

### Heavy duty applications

Manufactured using steel reinforced 40MPa concrete, Infrastructure Products Australia' precast encasements are an excellent solution for heavy duty applications.

## Full specifications

Material	High strength concrete has a compressive strength of 40MPa or greater. Infrastructure Products Australia manufactures their precast encasements using steel reinforced concrete to ensure a minimum of 40MPa. This ensures that our precast encasements remain durable and robust throughout their lifetime.
Load Rating	Precast encasements are manufactured to a Class D load rating (a serviceability design load of 900kN) under the Australian Standard AS/NZ 3996. This makes our precast encasements suitable for docks, wharves and airport runways.



Contact Us

Email: [sales@cubis-systems.com.au](mailto:sales@cubis-systems.com.au)

Phone: 1800 665 356