


# LINTEL SM2 AUS PITS SINGLE 1300X (PLSM2A13)

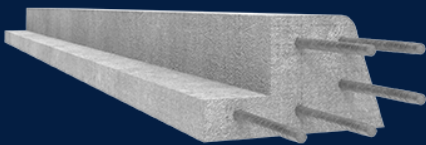
Product Code: 50202646



Concrete lintel to suit 900 wide side entry pit behind a semi-mountable kerb in council applications.

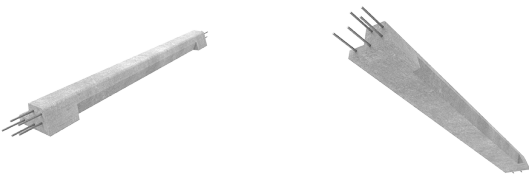
 MATERIAL  
Precast Concrete

 SIZE  
1300mm (L) x 310mm (W) x 180mm (D)



## Features & benefits

## Full specifications



Contact Us

Email: [sales@cubis-systems.com.au](mailto:sales@cubis-systems.com.au)

Phone: 1800 665 356