

# MULTIDUCT™ UNIT 6 WAY

Product Code: 50201238

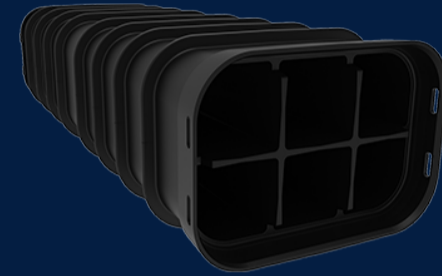


This duct was designed with six slots to carry six different electrical wires simultaneously. It can be easily assembled and run in between Stakkabox pits.

 MATERIAL  
High Density Polyethylene (HDPE)

 SIZE  
1110mm (L) x 372mm (W) x 265mm (D)

 LOAD RATING  
B



## Features & benefits

### Lightweight

Weight under 14kgs

### Quick Assembly with Secure One Click Connection System

Takes a few minutes to install, no tools are required

### Applications

Six slots for six applications



## Full specifications

Material	Manufactured from high density polyethylene (HDPE), MULTIDuct™ offers a lightweight, high strength to weight unit. With parts weighing below 20kg MULTIDuct™ offers significant health and safety advantages permitting a single person lift and install.
Load Rating	Infrastructure Products Australia' MULTIDuct™ manufactured to a Class B load rating (ultimate limit state design load of 10kN) under the Australian Standard AS/NZ 3996
How it works	Interlocking male and female clips, makes installation process seem like a puzzle. Installation is as easy as lining the clips together and clicking the duct into place. Interior of the ducts is seamless and eliminates disengagement during cable pulling.

Contact Us

Email: [sales@cubis-systems.com.au](mailto:sales@cubis-systems.com.au)

Phone: 1800 665 356