



# RAILDUCT™ ASSEMBLY T-PIECE LEFT BLACK

Product Code: 50201212

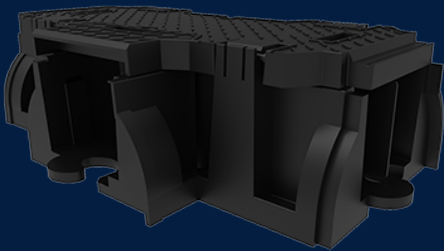


T-piece was designed to make a 90 degrees turn to the left within a railiduct assembly line. It can be easily assembled and run alongside train tracks, it can be walked and driven over. It is UV protected for the Australian sun.

 MATERIAL  
High Density Polyethylene (HDPE)

 SIZE  
1024mm (L) x 500mm (W) x 300mm (D)

 LOAD RATING  
B



## Features & benefits

### Lightweight HDPE

Takes less than a minute to install, no tools are required Every piece can be opened individually

### Quick Assembly

RAILduct™ offers a hook twist and lock interlocking mechanism allowing fast laying of multiple units.

### Optional Water Drainage

Moulded slots within the base of the RAILduct™ unit allow for natural drainage of water into the ground below.



## Full specifications

Material	RAILduct™ is manufactured in nitrogen-foamed high density polyethylene (HDPE), of which up to 70% is recycled material. HDPE possesses excellent strength to weight properties.
Load Rating	Infrastructure Products Australia' RAILduct™ manufactured to a Class B load rating (ultimate limit state design load of 10kN) under the Australian Standard AS/NZ 3996
How it works	Interlocking hooks clip into each other like puzzles. Installation is as easy as lining the hooks together and dropping the duct into place. Roof of every piece is removable and therefore makes wire/pipe installation or maintenance simple.

Contact Us

Email: [sales@cubis-systems.com.au](mailto:sales@cubis-systems.com.au)

Phone: 1800 665 356