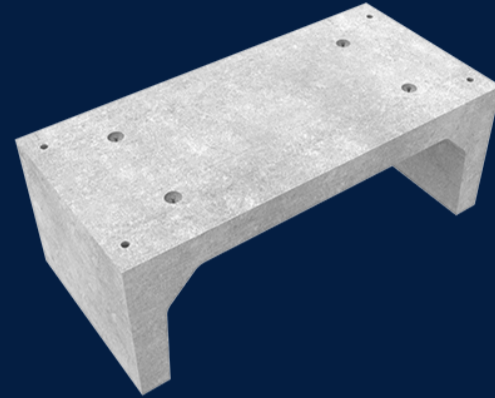


# BOX CULVERTS TMR 2400x1200-2A 1200MM NOMINAL LENGTH

Product Code: 50207194

Box culverts are TMR approved products and they have several application options. They were designed for high flow drainage solutions, but simultaneously they can be used as road or train tracks underpasses, or for walkways. Box culverts have a lifespan of 100 years.



 MATERIAL  
Precast Concrete

 SIZE  
2400mm (L) x 1200mm (W) x 1200mm (D)

 LOAD RATING  
D

## Features & benefits

### High flow drainage

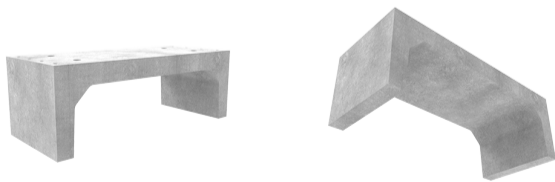
Multiple conduits help channel the water away quickly to prevent flooding.

### Different configurations are possible

Box culverts be used as bridge support, irrigation or walkway underpass.

### “U” shape

Single culvert can be inverted as a U shape with a base slab on top to create an enclosure.



## Full specifications

Material	40MPa fibre reinforced concrete is a high strength concrete used to make box culverts. The rating of 40MPa or greater means that box culverts will remain durable and robust throughout their lifetime.
Australian Standards	AS 3996: 2019
How it works	Base slabs are dropped into place followed by box culverts. If box culverts run parallel, then a link slab is placed in between to enclose the middle conduit. Minimal amount of backfill is required to complete the project.