

PIT CONCRETE BELLTOP 1100X900X1050 CLASS D VLINE KNOCKOUTS

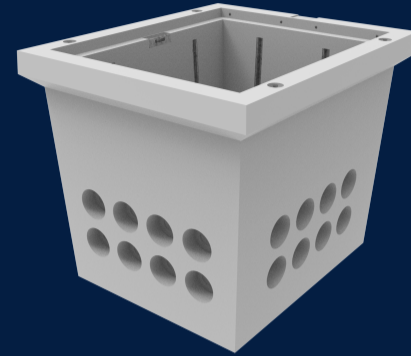
Product Code: 50211268

A durable precast concrete pit designed to V/Line specifications, featuring eight knockout holes on each side for maximum cable-pulling flexibility and efficient underground cable management.

 MATERIAL
Precast Concrete

 SIZE
1100mm (L) x 900mm (W) x 1050mm (D)

 LOAD RATING
D



Features & benefits

Rail infrastructure-ready precast pit for fast, compliant installs

The Belltop 911 V/Line specified precast concrete pit is engineered for V/Line rail environments, delivering a "drop-in" solution that helps streamline civil works, reduce site rework, and keep projects moving on time.

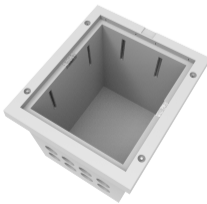
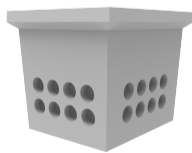
Flexible service entry for civil conduits and communications networks

Featuring 8 knock-outs on each side to suit multiple conduit layouts, the pit accommodates 150mm or 72mm bellmouths, making it ideal for rail corridor communications, signalling support infrastructure, power, and broader civil network applications.

Enhanced asset protection with security cover option

For high-risk locations and critical infrastructure sites, a security locking Galvanised Mild Steel cover is available (ordered separately), supporting safer access control, reduced tamper risk, and greater long-term durability in demanding civil conditions.

Full specifications



Contact Us

Email: sales@cubis-systems.com.au

Phone: 1800 665 356