

RISER CONCRETE 300MM 600X600X300X100MM REBATE


Product Code: 50201656

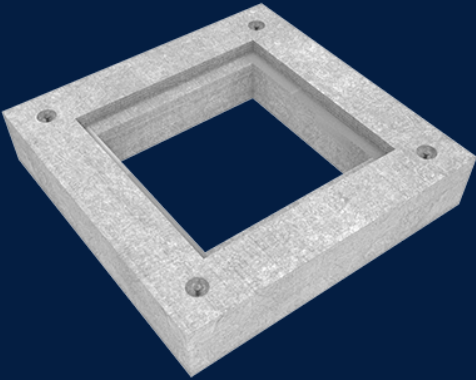


Infrastructure Products Australia's defence riser range incorporates SCEC endorsed locking cover assemblies which can be placed on top of our SCEC endorsed precast concrete pits to create depth variation.

 MATERIAL
Precast Concrete

 SIZE
600mm (L) x 600mm (W) x 300mm (D)

 LOAD RATING
D



Features & benefits

Steel reinforced for robustness

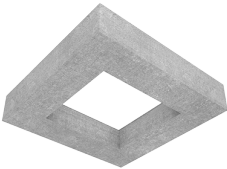
Our precast concrete covers are manufactured using minimum 40MPa steel reinforced concrete to ensure strength and integrity of the cover.

Variability in size

Our range of precast concrete covers come in a variety of sizes to ensure you have the right cover for your project.

Nationally approved for key industry authorities

Many networks and asset owners have approved our precast concrete cover range for specific project requirements.



Full specifications

Material	High strength concrete has a compressive strength of 40MPa or greater. Infrastructure Products Australia manufactures their precast concrete cable pits using a fibre reinforced concrete mix to ensure a minimum of 40MPa. This attests to our pits remaining durable and robust throughout their lifetime.
Australian Standards	Our precast concrete cover range is designed and built for a Class D load rating, meeting the Australian Standard AS/NZ 3996.
Load Rating	Infrastructure Products' precast concrete covers are manufactured to a Class D load rating (ultimate limit state design of 10kN) under the Australian Standard AS/NZ 3996. This makes our precast concrete covers suitable for areas accessible by pedestrians.

Contact Us

Email: sales@cubis-systems.com.au

Phone: 1800 665 356