

PIT CONCRETE 1000X600X1000X90MM CLASS D

Product Code: 50201233

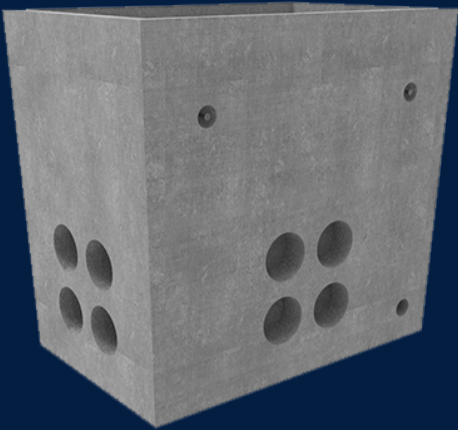


Infrastructure Products Australia works closely with key industry groups and authorities to develop its extensive precast concrete cable pit range, delivering innovative solutions proven for their strength, durability and consideration of unique sector requirements.

 MATERIAL
Precast Concrete

 SIZE
1180mm (L) x 780mm (W) x 1095mm (D)

 LOAD RATING
D



Features & benefits

Extensive Life Span

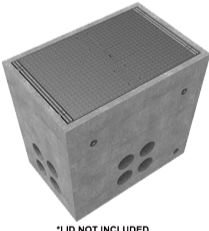
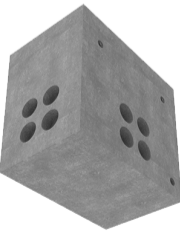
Design engineered to meet industry and installation requirements, your pit is guaranteed to withstand even the harshest conditions.

Bespoke Capabilities

Customisation of our precast concrete cable pits is available to suit the unique requirements of your project, so that you can be confident you're getting exactly what you need.

Nationally Approved for Key Industry Authorities

Various key industry authorities have approved our precast concrete cable pit range for specific project requirements across various sectors.



*LID NOT INCLUDED

Full specifications

Material	High-strength concrete has a compressive strength of 40MPa or greater. Cubis manufactures their precast concrete cable pits using a fibre reinforced concrete mix to ensure a minimum of 40MPa. This attests to our pits remaining durable and robust throughout their lifetime.
Australian Standards	Our standard precast concrete cable pits are designed and built up to a Class D load rating, meeting the Australian Standard AS/NZ 3996.
Load Rating	Infrastructure Products Australia' standard precast concrete cable pits are manufactured up to a Class D load rating (ultimate limit state design of 240kN).

Contact Us

Email: sales@cubis-systems.com.au

Phone: 1800 665 356