

PIT CONCRETE 1000X1000X1200X90MM CLASS D

Product Code: 50201157

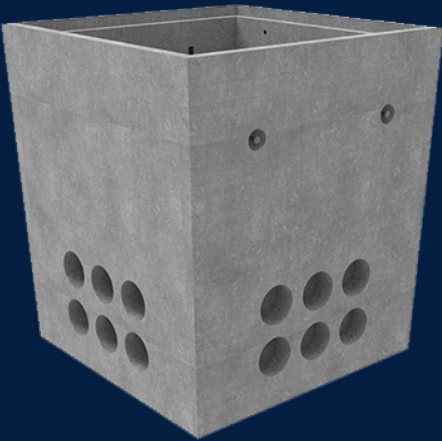


Infrastructure Products Australia works closely with key industry groups and authorities to develop its extensive precast concrete pit range, delivering innovative solutions proven for their strength, durability and consideration of unique sector requirements.

 MATERIAL
Precast Concrete

 SIZE
1180mm (L) x 1180mm (W) x 1305mm (D)

 LOAD RATING
D



Features & benefits

Extensive Life Span

Design engineered to meet industry and installation requirements, your pit is guaranteed to withstand even the harshest conditions.

Robust Cover and Security Options

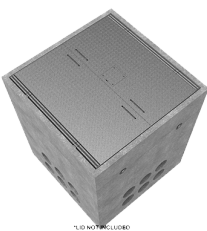
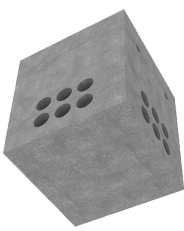
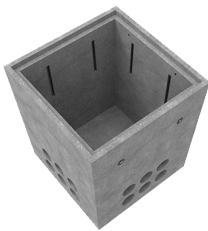
Multiple access cover, riser and encasement options are available to add extra depth, security and access preferences to your pit.

Bespoke Capabilities

Customisation of our precast concrete pits is available to suit the unique requirements of your project, so that you can be confident you're getting exactly what you need.

Full specifications

Material	High strength concrete has a compressive strength of 40MPa or greater. Infrastructure Products Australia manufactures their precast concrete pits using a fibre reinforced concrete mix to ensure a minimum of 40MPa. This attests to our pits remaining durable and robust throughout their lifetime.
Load Rating	Infrastructure Products Australia standard precast concrete pits are manufactured up to a Class D load rating (ultimate limit state design of 240kN) under the Australian Standard AS/NZ 3996.



Contact Us

Email: sales@cubis-systems.com.au

Phone: 1800 665 356