

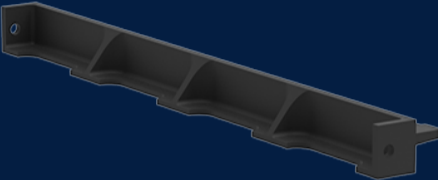
# MANHOLE SIDE MEMBER 1240MM

Product Code: 50201033



 MATERIAL  
Ductile Cast Iron

 SIZE  
1240mm (L) x 74mm (W) x 91mm (D)



## Features & benefits



## Full specifications

**Material** Ductile iron covers are manufactured from spheroidal graphite cast iron to achieve specified tensile strength and elongation requirements. Ductile iron covers can be utilised in a variety of applications to meet strength and durability requirements.

Contact Us

Email: [sales@cubis-systems.com.au](mailto:sales@cubis-systems.com.au)

Phone: 1800 665 356