

CROSSBAR P7 PIT

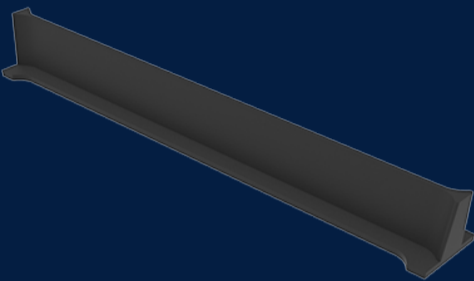
Product Code: 50201871



CROSSBAR P7 PIT

 MATERIAL
Ductile Cast Iron

 SIZE
500mm (L) x 76mm (W) x 60mm (D)



Features & benefits



Full specifications

Material	Ductile iron covers are manufactured from spheroidal graphite cast iron to achieve specified tensile strength and elongation requirements. Ductile iron covers can be utilised in a variety of applications to meet strength and durability requirements.
----------	-----------------------------------------------------------------------------------------------------------------------------------------------------------------------------------------------------------------------------------------------------------